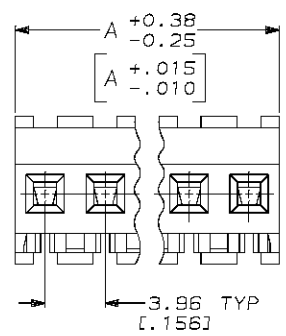
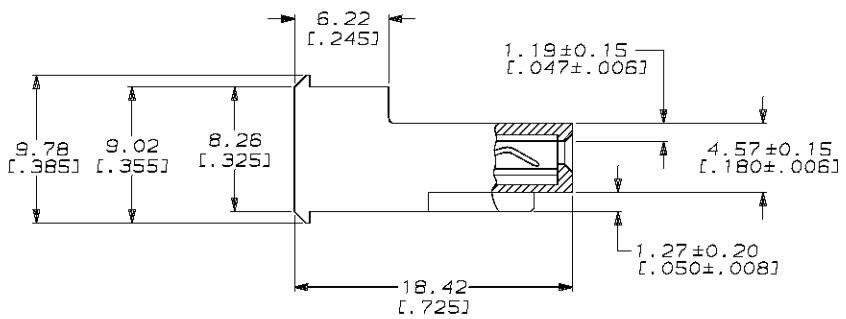
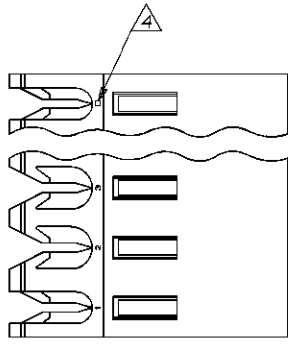


LOC	DIST	P	F	ZONE	LTR	REVISIONS	DATE	APPD
CM	54				S	REACT -16,-18 THRU -23 AND REV PER EC 0730-0242-95	3-06-95	BL RS



95.10	[3.744]	24	2-640606-4
91.14	[3.588]	23	2-640606-3
87.17	[3.432]	22	2-640606-2
83.21	[3.276]	21	2-640606-1
79.25	[3.120]	20	2-640606-0
75.29	[2.964]	19	1-640606-9
71.32	[2.808]	18	1-640606-8
67.36	[2.652]	17	1-640606-7
63.40	[2.496]	16	1-640606-6
59.44	[2.340]	15	1-640606-5
55.47	[2.184]	14	1-640606-4
51.51	[2.028]	13	1-640606-3
47.55	[1.872]	12	1-640606-2
43.59	[1.716]	11	1-640606-1
39.62	[1.560]	10	1-640606-0
35.66	[1.404]	9	640606-9
31.70	[1.248]	8	640606-8
27.74	[1.092]	7	640606-7
23.77	[0.936]	6	640606-6
19.81	[0.780]	5	640606-5
15.85	[0.624]	4	640606-4
11.89	[0.468]	3	640606-3
7.92	[0.312]	2	640606-2

- ⚠ MATERIAL: CONNECTOR - NYLON UL94V-2 (RED).
CONTACTS - 0.30[0.012] THICK COPPER ALLOY
(BRIGHT-TIN 0.00203
[0.00080] MIN THK)
- 2. CONTACTS ACCEPT 22 AWG WIRE WITH 2.41[0.095] MAX INSULATION DIAMETER.
- 3. CONTACTS MUST ACCEPT 1.14±0.03[0.045±.001] SQUARE POST AND REMAIN LOCKED IN POSITION.
- ⚠ IDENTIFICATION NUMBER FOR LAST CIRCUIT MAY NOT APPEAR ON ALL ASSEMBLIES.
- 5. DIMENSIONS IN BRACKETS ARE IN INCHES.
- 6. HOUSING FEATURES ARE: FEED-THRU WITHOUT LOCKING RAMP.

DO NOT SCALE PRINT. UNLESS SPECIFIED DIMENSIONS IN mm [INCHES] TOLERANCES ON: 2 PLC DEC ± - 3 PLC DEC ± 0.13 [0.005] ANGLES ± -		DR 2-12-91 B. LEWIS	AMP Incorporated Harrisburg, PA 17105-3608
MATERIAL ⚠		CHK 2-12-91 R. SWING	
FINISH ⚠		APPD 2-19-91 D. CLARK	NAME MTA-156 CONNECTOR ASSEMBLY, 22 AWG, STANDARD
		APPD 2-19-91 D. CLARK	SIZE C 00779
		PRODUCT SPEC 108-1051	DRAWING NO 640606
		APPLICATION SPEC 114-1020	SCALE 4:1
		WEIGHT -	SHEET 1 OF 1

