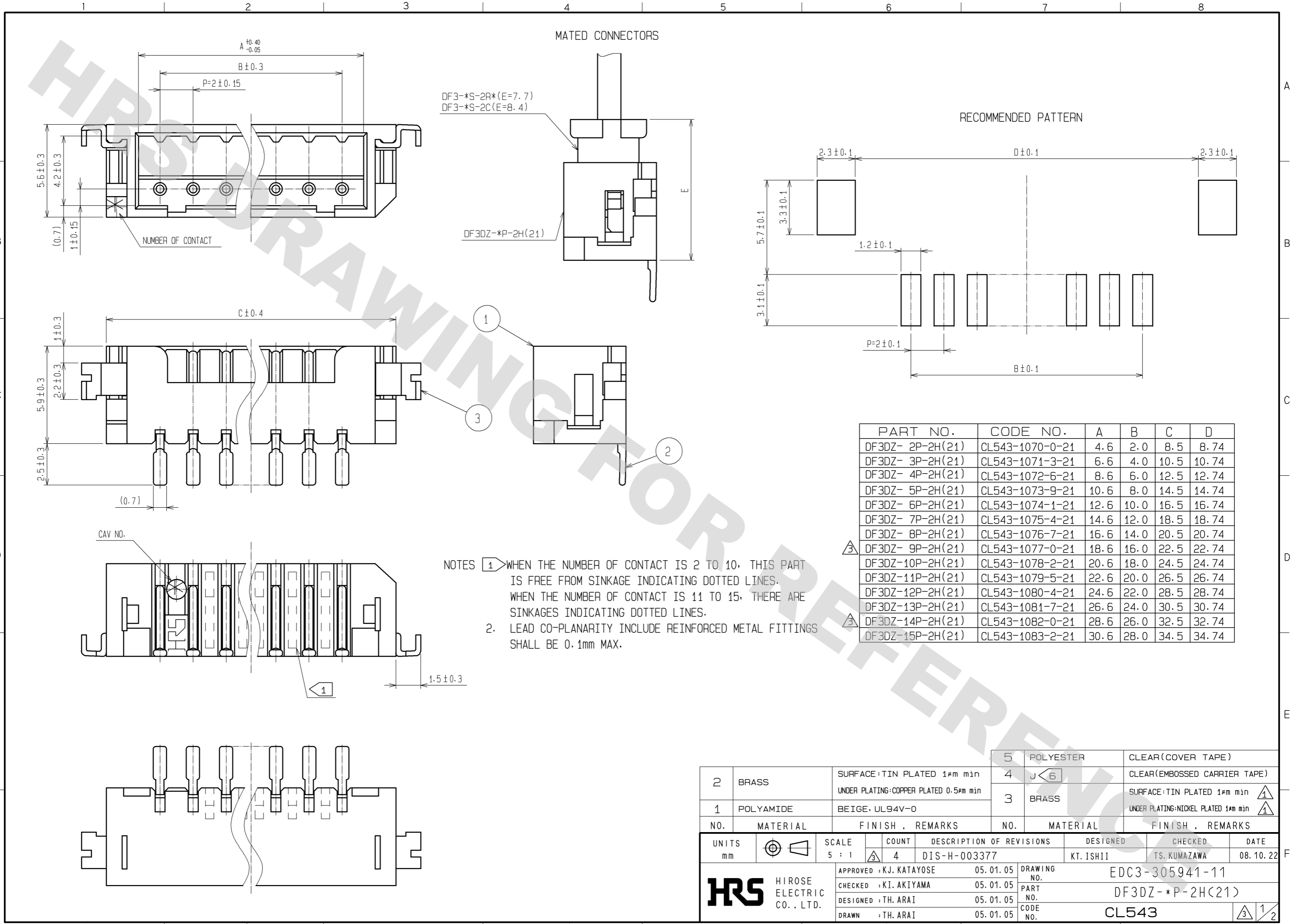


DRAWING FOR REFERENCE: This is subject to change without notice  
08/11/2012



DF3-\*S-2R\*(E=7.7)  
DF3-\*S-2C(E=8.4)

DF3DZ-\*P-2H(21)

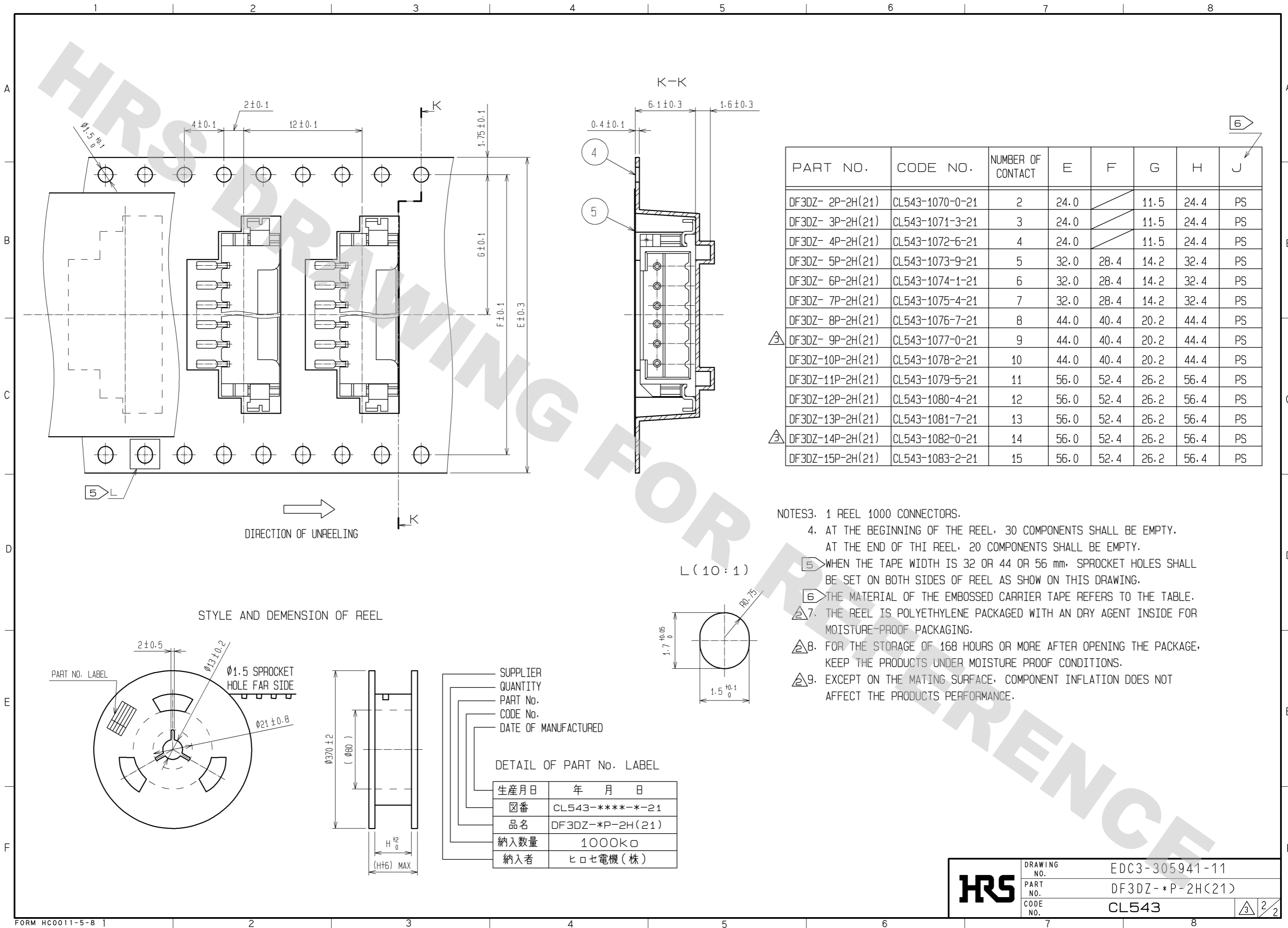
RECOMMENDED PATTERN

NOTES 1. WHEN THE NUMBER OF CONTACT IS 2 TO 10, THIS PART IS FREE FROM SINKAGE INDICATING DOTTED LINES. WHEN THE NUMBER OF CONTACT IS 11 TO 15, THERE ARE SINKAGES INDICATING DOTTED LINES.  
2. LEAD CO-PLANARITY INCLUDE REINFORCED METAL FITTINGS SHALL BE 0.1mm MAX.

PART NO.	CODE NO.	A	B	C	D
DF3DZ- 2P-2H(21)	CL543-1070-0-21	4.6	2.0	8.5	8.74
DF3DZ- 3P-2H(21)	CL543-1071-3-21	6.6	4.0	10.5	10.74
DF3DZ- 4P-2H(21)	CL543-1072-6-21	8.6	6.0	12.5	12.74
DF3DZ- 5P-2H(21)	CL543-1073-9-21	10.6	8.0	14.5	14.74
DF3DZ- 6P-2H(21)	CL543-1074-1-21	12.6	10.0	16.5	16.74
DF3DZ- 7P-2H(21)	CL543-1075-4-21	14.6	12.0	18.5	18.74
DF3DZ- 8P-2H(21)	CL543-1076-7-21	16.6	14.0	20.5	20.74
DF3DZ- 9P-2H(21)	CL543-1077-0-21	18.6	16.0	22.5	22.74
DF3DZ-10P-2H(21)	CL543-1078-2-21	20.6	18.0	24.5	24.74
DF3DZ-11P-2H(21)	CL543-1079-5-21	22.6	20.0	26.5	26.74
DF3DZ-12P-2H(21)	CL543-1080-4-21	24.6	22.0	28.5	28.74
DF3DZ-13P-2H(21)	CL543-1081-7-21	26.6	24.0	30.5	30.74
DF3DZ-14P-2H(21)	CL543-1082-0-21	28.6	26.0	32.5	32.74
DF3DZ-15P-2H(21)	CL543-1083-2-21	30.6	28.0	34.5	34.74

2	BRASS	SURFACE:TIN PLATED 1μm min UNDER PLATING:COPPER PLATED 0.5μm min	5	POLYESTER	CLEAR(COVER TAPE)
1	POLYAMIDE	BEIGE, UL94V-0	4	J < 6	CLEAR(EMBOSSD CARRIER TAPE)
			3	BRASS	SURFACE:TIN PLATED 1μm min UNDER PLATING:NICKEL PLATED 1μm min
NO.	MATERIAL	FINISH, REMARKS	NO.	MATERIAL	FINISH, REMARKS
UNITS	mm	SCALE 5 : 1	COUNT 4	DESCRIPTION OF REVISIONS	DESIGNED KT. ISHII
				DIS-H-003377	CHECKED TS. KUMAZAWA
				DATE 08.10.22	
APPROVED : KJ. KATAYOSE		05.01.05		DRAWING NO. EDC3-305941-11	
CHECKED : KI. AKIYAMA		05.01.05		PART NO. DF3DZ-*P-2H(21)	
DESIGNED : TH. ARAI		05.01.05		CODE NO. CL543	
DRAWN : TH. ARAI		05.01.05			

DRAWING FOR REFERENCE: This is subject to change without notice  
08/11/2012



PART NO.	CODE NO.	NUMBER OF CONTACT	E	F	G	H	J
DF3DZ- 2P-2H(21)	CL543-1070-0-21	2	24.0		11.5	24.4	PS
DF3DZ- 3P-2H(21)	CL543-1071-3-21	3	24.0		11.5	24.4	PS
DF3DZ- 4P-2H(21)	CL543-1072-6-21	4	24.0		11.5	24.4	PS
DF3DZ- 5P-2H(21)	CL543-1073-9-21	5	32.0	28.4	14.2	32.4	PS
DF3DZ- 6P-2H(21)	CL543-1074-1-21	6	32.0	28.4	14.2	32.4	PS
DF3DZ- 7P-2H(21)	CL543-1075-4-21	7	32.0	28.4	14.2	32.4	PS
DF3DZ- 8P-2H(21)	CL543-1076-7-21	8	44.0	40.4	20.2	44.4	PS
DF3DZ- 9P-2H(21)	CL543-1077-0-21	9	44.0	40.4	20.2	44.4	PS
DF3DZ-10P-2H(21)	CL543-1078-2-21	10	44.0	40.4	20.2	44.4	PS
DF3DZ-11P-2H(21)	CL543-1079-5-21	11	56.0	52.4	26.2	56.4	PS
DF3DZ-12P-2H(21)	CL543-1080-4-21	12	56.0	52.4	26.2	56.4	PS
DF3DZ-13P-2H(21)	CL543-1081-7-21	13	56.0	52.4	26.2	56.4	PS
DF3DZ-14P-2H(21)	CL543-1082-0-21	14	56.0	52.4	26.2	56.4	PS
DF3DZ-15P-2H(21)	CL543-1083-2-21	15	56.0	52.4	26.2	56.4	PS

- NOTES3. 1 REEL 1000 CONNECTORS.  
 4. AT THE BEGINNING OF THE REEL, 30 COMPONENTS SHALL BE EMPTY.  
 AT THE END OF THI REEL, 20 COMPONENTS SHALL BE EMPTY.  
 5. WHEN THE TAPE WIDTH IS 32 OR 44 OR 56 mm, SPROCKET HOLES SHALL BE SET ON BOTH SIDES OF REEL AS SHOW ON THIS DRAWING.  
 6. THE MATERIAL OF THE EMBOSSED CARRIER TAPE REFERS TO THE TABLE.  
 7. THE REEL IS POLYETHYLENE PACKAGED WITH AN DRY AGENT INSIDE FOR MOISTURE-PROOF PACKAGING.  
 8. FOR THE STORAGE OF 168 HOURS OR MORE AFTER OPENING THE PACKAGE, KEEP THE PRODUCTS UNDER MOISTURE PROOF CONDITIONS.  
 9. EXCEPT ON THE MATING SURFACE, COMPONENT INFLATION DOES NOT AFFECT THE PRODUCTS PERFORMANCE.

SUPPLIER  
 QUANTITY  
 PART No.  
 CODE No.  
 DATE OF MANUFACTURED

DETAIL OF PART No. LABEL

生産月日	年 月 日
図番	CL543-****-*-21
品名	DF3DZ-*P-2H(21)
納入数量	1000k口
納入者	ヒロセ電機(株)

<b>HRS</b>	DRAWING NO.	EDC3-305941-11
	PART NO.	DF3DZ-*P-2H(21)
	CODE NO.	CL543