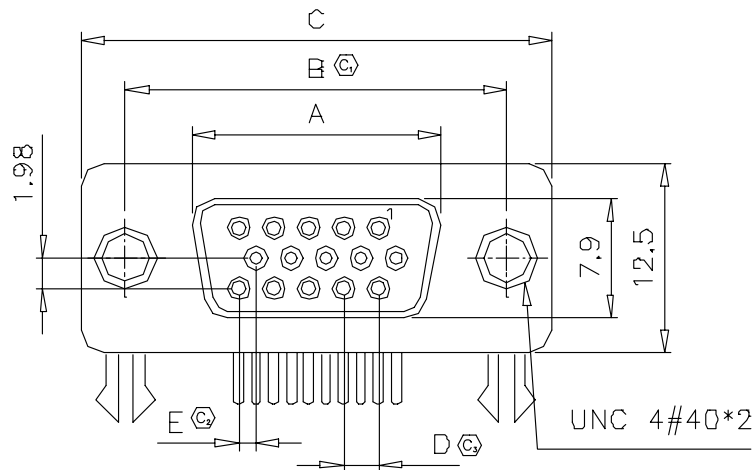


REVISION A



HDSM-350-X-XX-XX-X-XX-XX

SETBACK

-350: .350 in.

SHELL SIZE/POSITION

-E-15 -A-26

-B-44 -C-62

GENDER/COLOR

-S1: Socket / Blue

OPTION

-FT: THREADED INSERTS

-RJ: REMOVEABLE JACK SCREWS

MOUNTING OPTION

-FB: FORKED BOARD LOCK

CONTACT PLATING

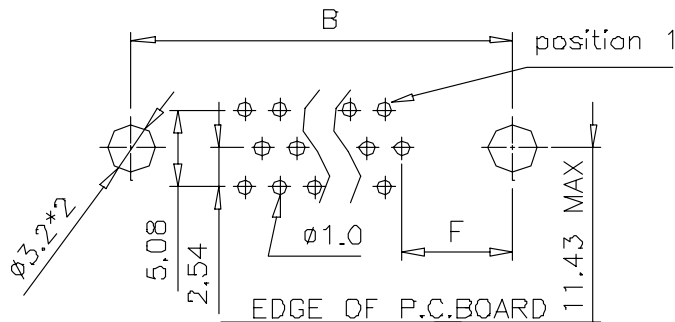
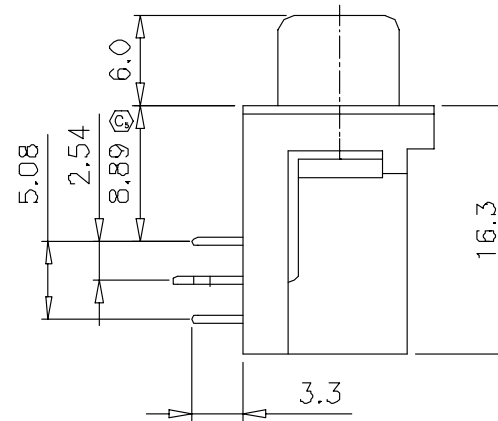
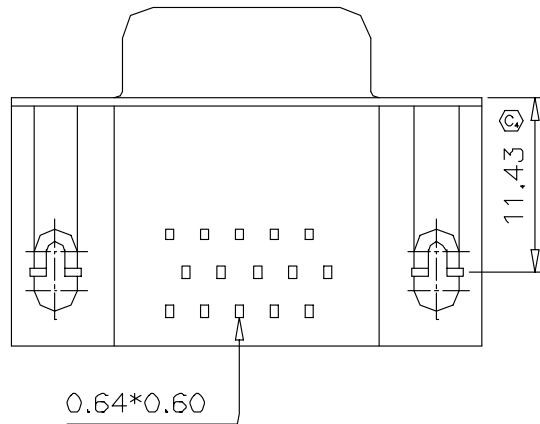
-F: FLASH

-L: .000015" Au

-S: .000030" Au

POSITION	A	B	C	D	E	F
15	16.30	25.00	30.8	2.29	1.14	7.04
26	24.60	33.30	39.2	2.29	1.14	6.88
44	38.30	47.10	53.1	2.29	1.14	6.88
62	54.80	63.50	69.4	2.41	1.20	7.00

DO NOT SCALE FROM THIS PRINT



RECOMMENDED P.C.B LAYOUT(TOP VIEW)
TOLERANCES: ±0.10mm

NOTES:

- ① REPRESENTS CRITICAL DIMENSION.
- SELECTIVE GOLD ON CONTACT AREAS, TIN/LEAD ON TAILS

UNLESS OTHERWISE SPECIFIED, DIMENSIONS ARE IN MM. TOLERANCES ARE:

DECIMALS .X: ±.38 .XX: ±.25 .XXX: ±.10

ANGLES 2°

PROPRIETARY NOTE
THIS DOCUMENT CONTAINS INFORMATION CONFIDENTIAL AND PROPRIETARY TO SAMTEC INC. AND SHALL NOT BE REPRODUCED OR TRANSFERRED TO OTHER DOCUMENTS OR DISCLOSED TO OTHERS OR USED FOR ANY PURPOSE OTHER THAN THAT FOR WHICH IT WAS OBTAINED WITHOUT THE EXPRESSED WRITTEN CONSENT OF SAMTEC INC.

samtec

520 PARK EAST BLVD. NEW ALBANY, IN 47150
(812) 944-6733 P.O. BOX 1147 TWX: 810-540-4085

CODE: 55322

DO NOT SCALE DRAWING
INSULATOR: PBT, UL 94V-0 Rated, Blue
CONTACT: Brass
SHIELD: Steel, Nickel plated

MAX FLASH ALLOWED: .051

MAX GATE VESTIGE: .051

F:\DWG\MISC\MKTG

SHEET SCALE: 1:2

DESCRIPTION:

High Density D-Sub PCB Right Angle

DWG. NO.

HDSM-350-X-XX-XX-X-XX-XX

BY: J. Riley 04/28/04

SHEET 1 OF 1