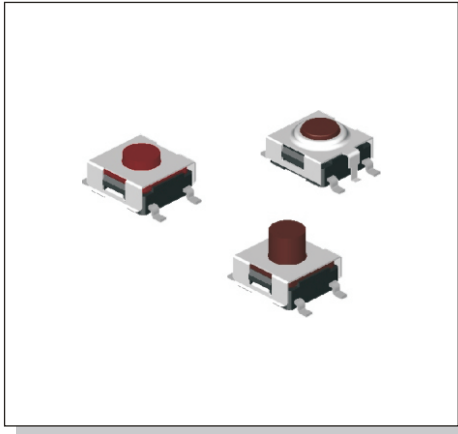
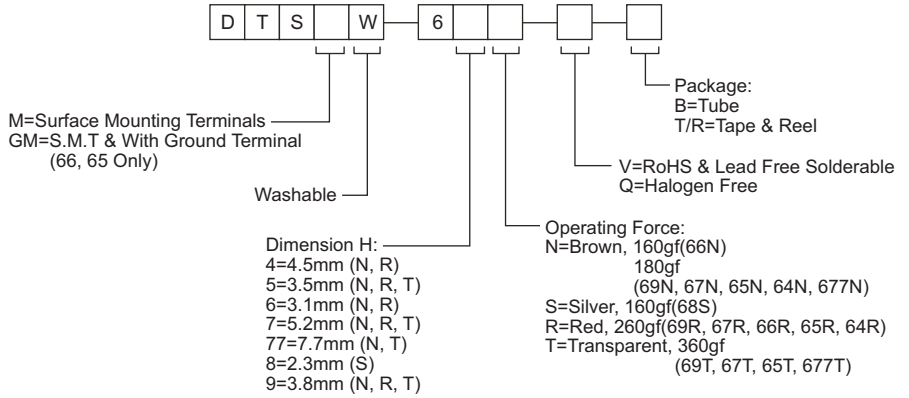


DTS(G)MW-6 SERIES

6x6 Gull-Wing SMT Washable Type



HOW TO ORDER



SPECIFICATION

MECHANICAL

Operation Force:
360±90gf, Transparent (T), 69, 67, 65, 677
260±70gf, Red (R), 69,67,66,65,64
180±50gf, Brown (N), 69,67,65,64, 677
160±50gf, Brown (N), 66
160±50gf, Silver (S), 68
Stroke:
0.25 +0.20 / - 0.1 mm 68S, 66N, 66R, 677
0.45±0.2mm, [69, 67 N/R], [65, 64N/R/T]
0.6±0.2mm, 69, 67T

ENVIRONMENTAL

Operation Temperature Range : -25C to +70C
Storage Temperature Range : -30C to +80C
Sealed IP57

ELECTRICAL

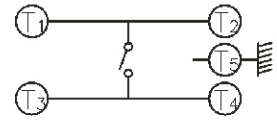
Electrical Life:
500,000 cycles min. for 69, 67, 65, 64, 677
100,000 cycles min. for 66,68
Rating: 50mA, 12VDC

PACKAGE

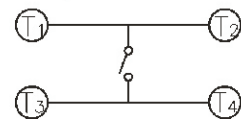
Tube: 75 pcs/tube
DTSGMW-66: 2000 pcs/reel
DTSMW-68, 66: 2000 pcs/reel
DTSMW-69, 65: 1900 pcs/reel
DTSMW-67, 64: 900 pcs/reel
DTSMW-677: 650 pcs/reel

CIRCUIT

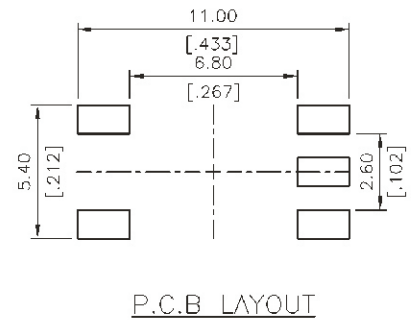
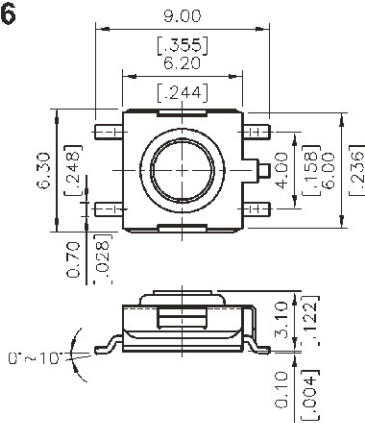
DTSGMW-66



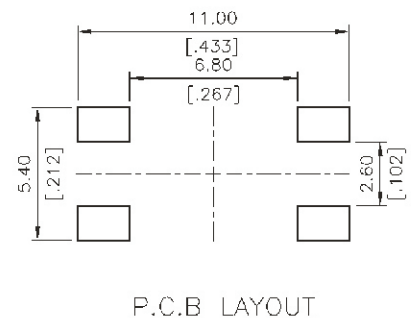
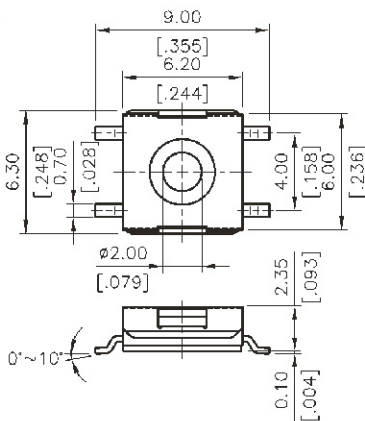
DTSMW-6*



DTSGMW-66



DTSMW-68

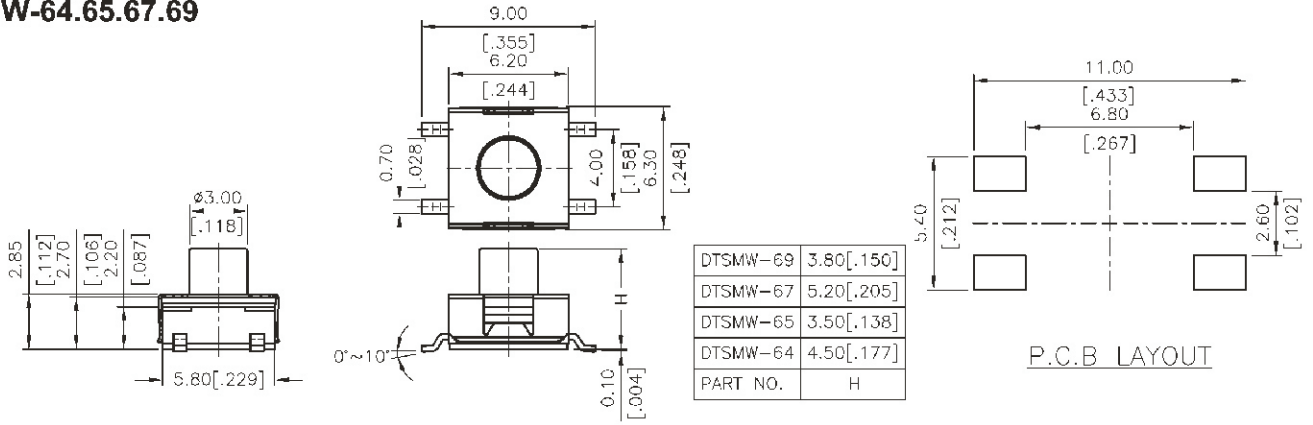


DTS(G)MW-6 SERIES

6x6 Gull-Wing SMT
Washable Type



DTSMW-64.65.67.69



TACT SWITCH