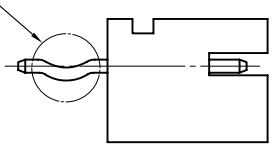
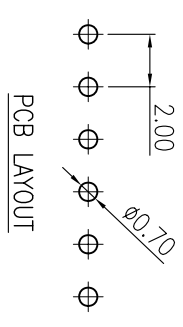
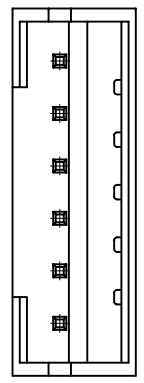


VI.1 NOTE: THIS DEVICE IS ROHS COMPLIANT.

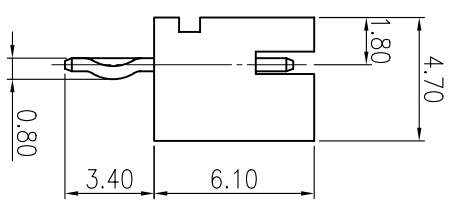
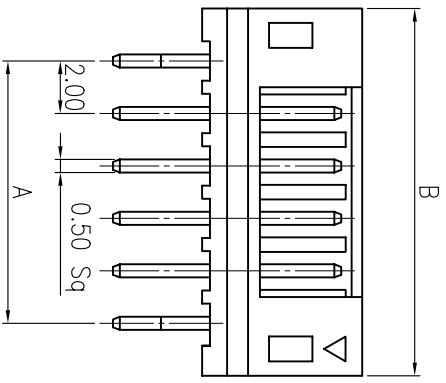
REVISIONS		1	2	3	4	5	6	7	8
SYM	DISCRIPTION	DATE	APPROVED	SYM	DISCRIPTION	DATE	APPROVED		
Δ	NOTE ROHS STANDARD	10/MAY/06'	KEN	Δ					
Δ				Δ					

****CUSTOMER DRAWING FOR REFERENCE ONLY, SAMPLES APPROVAL ARE REQUIRED!!**



OPTION: KINKED LEGS
 MMT P/N: MCB001-PXXT-K
 b: PITCH=2.00mm
 001: SERIES NO.
 P: PCB TYPE, STRAIGHT
 XX: NO. OF CONTACTS
 T: TIN PLATED
 K: KINKED LEGS

PART NO.	POLES	DIMENSION		PCS/BAG
		A	B	
MCB001-P02T	2	2.00	6.00	1,000
MCB001-P03T	3	4.00	8.00	1,000
MCB001-P04T	4	6.00	10.00	1,000
MCB001-P05T	5	8.00	12.00	1,000
MCB001-P06T	6	10.00	14.00	1,000
MCB001-P07T	7	12.00	16.00	1,000
MCB001-P08T	8	14.00	18.00	1,000
MCB001-P09T	9	16.00	20.00	1,000
MCB001-P10T	10	18.00	22.00	1,000
MCB001-P11T	11	20.00	24.00	1,000
MCB001-P12T	12	22.00	26.00	1,000
MCB001-P13T	13	24.00	28.00	1,000
MCB001-P14T	14	26.00	30.00	1,000
MCB001-P15T	15	28.00	32.00	1,000
MCB001-P16T	16	30.00	34.00	1,000



SPECIFICATIONS
 CURRENT RATING : 1A AC, DC
 VOLTAGE RATING : 100V AC, DC
 TEMPERATURE RANGE : -25°C ~ +85°C
 CONTACT RESISTANCE : 20mOHM MAX.
 INSULATION RESISTANCE : 1000 MOHM MIN.
 WITHSTANDING VOLTAGE : 800V AC/MINUTE

MATERIAL :
 PIN: BRASS / TIN PLATED
 BASE : NYLON 66 , UL94V-0

MATING		HOUSING	MCB001-XX-H	TERMINAL	MCB001-T
TOLERANCES UNLESS OTHERWISE SPECIFIED	SIGNATURES	DATE	MODEL		
±0.25	DRAWN VVI	29/OCT/02'	WAFER		
SYMBOL UNIT mm	CHECKED ZOJA	29/OCT/02'	NO.		
SCALE 5/1	APPROVALS		MCB001-P__T		

MMT CORPORATION

TEL:(510)979-2188

www.mmtmachine.com

FAX:(510)979-2189