

STRAIGHT FILTERED D-SUB ORDERING CODE

PDF-15 S S - S W - H

NUMBER OF PINS =09
=15
=25
=37

GENDER MALE =S
FEMALE =R

TERMINATION TYPE P.C. PINS =BLANK
SOLDER CUP =S
EXTENDED P.C. PINS =E

INSULATOR COLOR BLACK =BLANK
WHITE =W

MATING FACE 2.5mm HEX RIVET =BLANK
3.8mm RIVET ATTACHED IN BACK =A
5.8mm RIVET ATTACHED IN BACK =D
5.8mm BOARD LOCK =G
HOLE =H
5.8mm RIVET ATTACHED IN FRONT =K
4-40 THREADED RIVET & JACK SCREW (UNASSEMBLED) =P
4-40 THREADED RIVET & JACK SCREW =R
11.9mm BOARD LOCK =U

GOLD PLATING (XX IS GOLD IN MICRO INCHES) =GXX
GOLD FLASH (STANDARD) =BLANK

STRAIGHT FILTERED D-SUB BOARD MOUNT OPTIONS

TERMINATION TYPE

		STANDARD		S OPTION	
		P.C. PINS		SOLDER CUP	
H OPTION HOLE					
K OPTION 5.8mm RIVET ATTACHED IN FRONT					
STANDARD 2.5mm HEX RIVET					
D OPTION 5.8mm RIVET ATTACHED IN BACK					
A OPTION 3.8mm RIVET ATTACHED IN BACK					
R OPTION ASSEMBLED 4-40 THREADED RIVET & JACK SCREW					
P OPTION UNASSEMBLED					

MATING FACE OPTIONS

MATERIAL AND FINISH:

Insulator: PBT, UL-94V-0 rated.

Shell: Steel, Tin plated.

Contacts: Brass, Gold plated on mating area, Tin on tails, all over Nickel underplated.

ELECTRICAL SPECIFICATIONS:

Rated current: 3A max.

Rated voltage: 250VAC max.

Insulation resistance: 3000 Mohm @ 500VDC

Dielectric withstanding voltage: 1000VAC for one minute

Contact resistance: 15 mohm max.

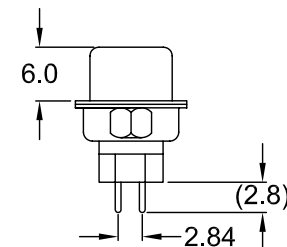
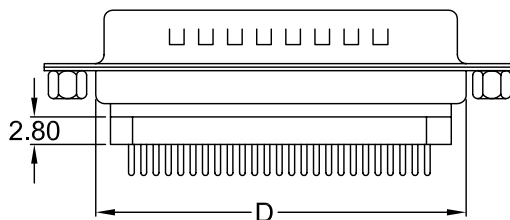
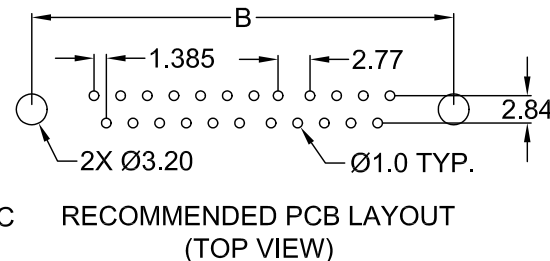
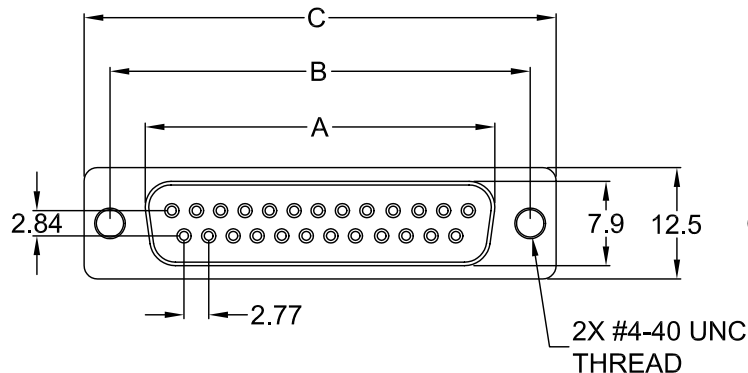
ENVIRONMENTAL:

Operating temperature: -55°C To +105°C

NOTES:

Replace first XX in P/N with number of positions.

POSITION	A	B	C	D
09	16.3	25.0	30.8	19.2
15	24.6	33.3	39.2	27.7
25	38.3	47.1	53.1	41.1
37	54.8	63.5	69.4	57.3



-X-XX: SEE ORDERING CODE FOR OPTIONS

TOLERANCE UNLESS OTHERWISE SPECIFIED

X	± 1
X.X	± 0.4
X.XX	± 0.20

Power Dynamics, Inc.

Phone: 973 560-0019 Whippany, New Jersey Fax: 973 560-0076

PART: STRAIGHT FILTERED FEMALE D-SUB PC PINS

DRAWN BY	DF	DATE:	2/15/06
CHECK BY		DATE:	
APPR BY		DATE:	

PART #:	PDF-XXRS-X-XX	SHEET	1 of 1
SIZE:	A	ALL DIMENSIONS FOR REFERENCE ONLY	REV:
SCALE:	NTS	DIMENSIONS ARE IN MILLIMETERS	

REV	DATE	CHANGE	CHK	CHK	APPR

6

5

4

3

2

1

MATERIAL AND FINISH:

Insulator: PBT, UL-94V-0 rated.

Shell: Steel, Tin plated.

Contacts: Brass, Gold plated on mating area, Tin on tails, all over Nickel underplated.

ELECTRICAL SPECIFICATIONS:

Rated current: 3A max.

Rated voltage: 250VAC max.

Insulation resistance: 3000 Mohm @ 500VDC

Dielectric withstanding voltage: 1000VAC for one minute

Contact resistance: 15 mohm max.

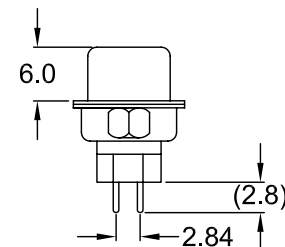
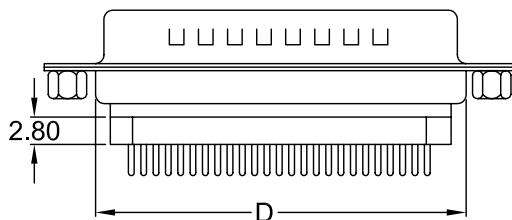
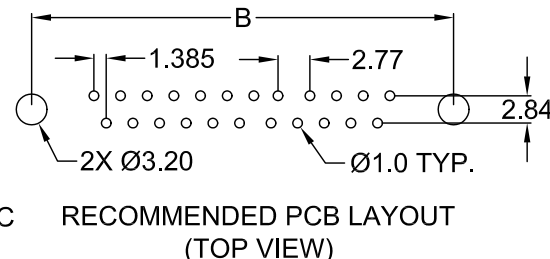
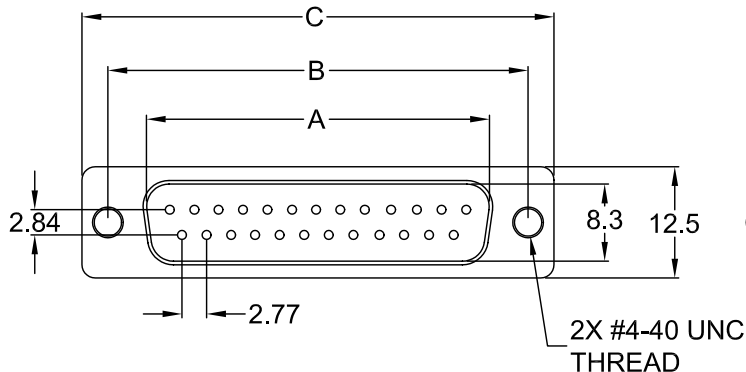
ENVIRONMENTAL:

Operating temperature: -55°C To +105°C

NOTES:

Replace first XX in P/N with number of positions.

POSITION	A	B	C	D
09	16.9	25.0	30.8	19.2
15	25.3	33.3	39.2	27.7
25	39.0	47.1	53.1	41.1
37	55.2	63.5	69.4	57.3



-X-XX: SEE ORDERING CODE FOR OPTIONS

TOLERANCE UNLESS OTHERWISE SPECIFIED	
X	± 1
X.X	± 0.4
X.XX	± 0.20

DRAWN BY	DF	DATE:	2/15/06
CHECK BY		DATE:	
APPR BY		DATE:	

Power Dynamics, Inc.
 Phone: 973 560-0019 Whippany, New Jersey Fax: 973 560-0076

PART: STRAIGHT FILTERED MALE D-SUB
 PC PINS

PART #: **PDF-XXSS-X-XX**

SIZE: A ALL DIMENSIONS FOR REFERENCE ONLY
 SCALE: NTS DIMENSIONS ARE IN MILLIMETERS

SHEET 1 of 1
 REV:

D

C

B

A

D

C

B

A

6

5

4

3

2

1

REVISIONS

CHNG	CHK	APPR
CHANGE		
DATE		
REV		

6

5

4

3

2

1

MATERIAL AND FINISH:

Insulator: PBT, UL-94V-0 rated.

Shell: Steel, Tin plated.

Contacts: Brass, Gold plated on mating area, Tin on tails, all over Nickel underplated.

ELECTRICAL SPECIFICATIONS:

Rated current: 3A max.

Rated voltage: 250V max.

Insulation resistance: 3000 Mohm @ 500VDC

Dielectric withstanding voltage: 1000VAC for one minute

Contact resistance: 15 mohm max.

SOLDERBILITY:

Solder time: 3 sec. ± 0.5 sec.

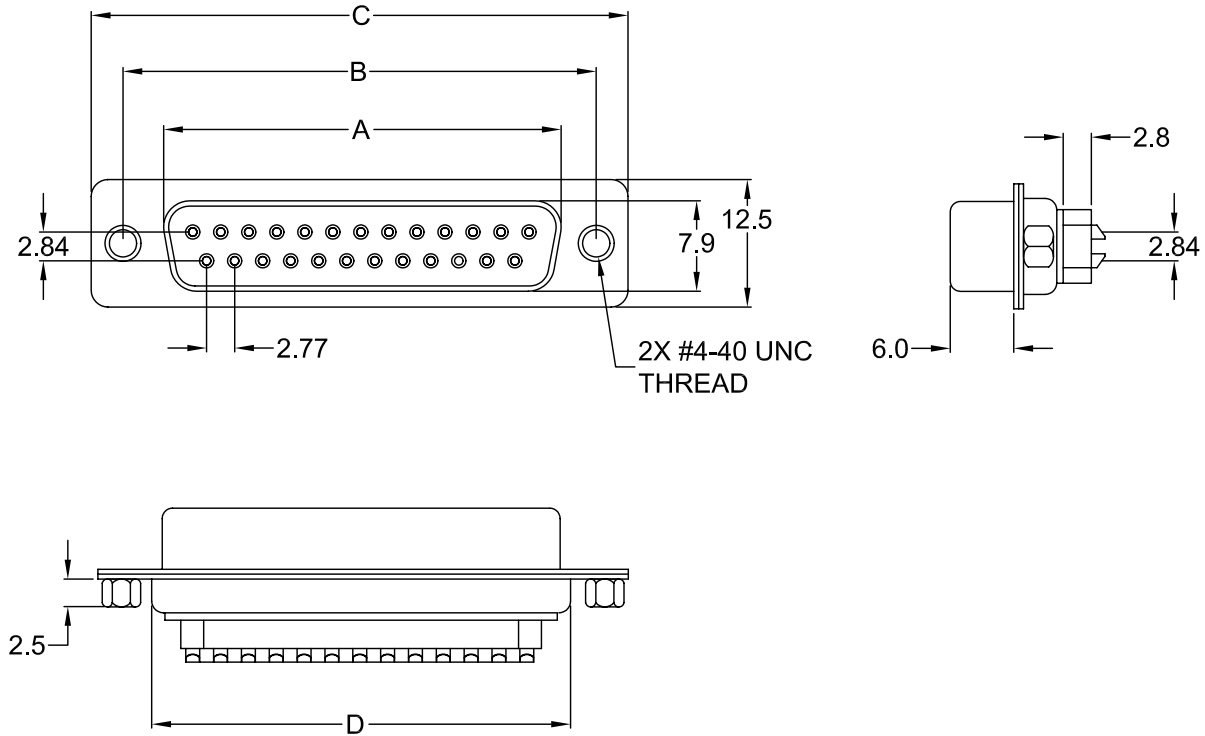
Solder temp: 245°C ± 5°C

ENVIRONMENTAL:

Operating temperature: -55°C To +105°C

NOTE: Replace first XX in part number with number of positions.

POSITION	A	B	C	D
09	16.3	25.0	30.8	19.2
15	24.6	33.3	39.2	27.7
25	38.3	47.1	53.1	41.1
37	54.8	63.5	69.4	57.3



-X-XX: SEE ORDERING CODE FOR OPTIONS

REVISIONS	CHNG	CHECK	APPR
	CHANGE		
	DATE		
REV	DATE		

TOLERANCE UNLESS OTHERWISE SPECIFIED	
X	± 1
X.X	± 0.4
X.XX	± 0.20
DRAWN BY	DF
CHECK BY	
APPR BY	
DATE:	2/15/06
DATE:	
DATE:	

Power Dynamics, Inc.
 Phone: 973 560-0019 Whippany, New Jersey Fax: 973 560-0076

PART: STRAIGHT FILTERED FEMALE D-SUB
 SOLDER CUP

PART #: **PDF-XXRS-SX-XX**

SIZE: A
 SCALE: NTS

ALL DIMENSIONS FOR REFERENCE ONLY
 DIMENSIONS ARE IN MILLIMETERS

SHEET 1 of 1
 REV:

6

5

4

3

2

1

6

5

4

3

2

1

MATERIAL AND FINISH:

Insulator: PBT, UL-94V-0 rated.

Shell: Steel, Tin plated.

Contacts: Brass, Gold plated on mating area, Tin on tails, all over Nickel underplated.

ELECTRICAL SPECIFICATIONS:

Rated current: 3A max.

Rated voltage: 250V max.

Insulation resistance: 3000 Mohm @ 500VDC

Dielectric withstanding voltage: 1000VAC for one minute

Contact resistance: 15 mohm max.

SOLDERBILITY:

Solder time: 3 sec. ± 0.5 sec.

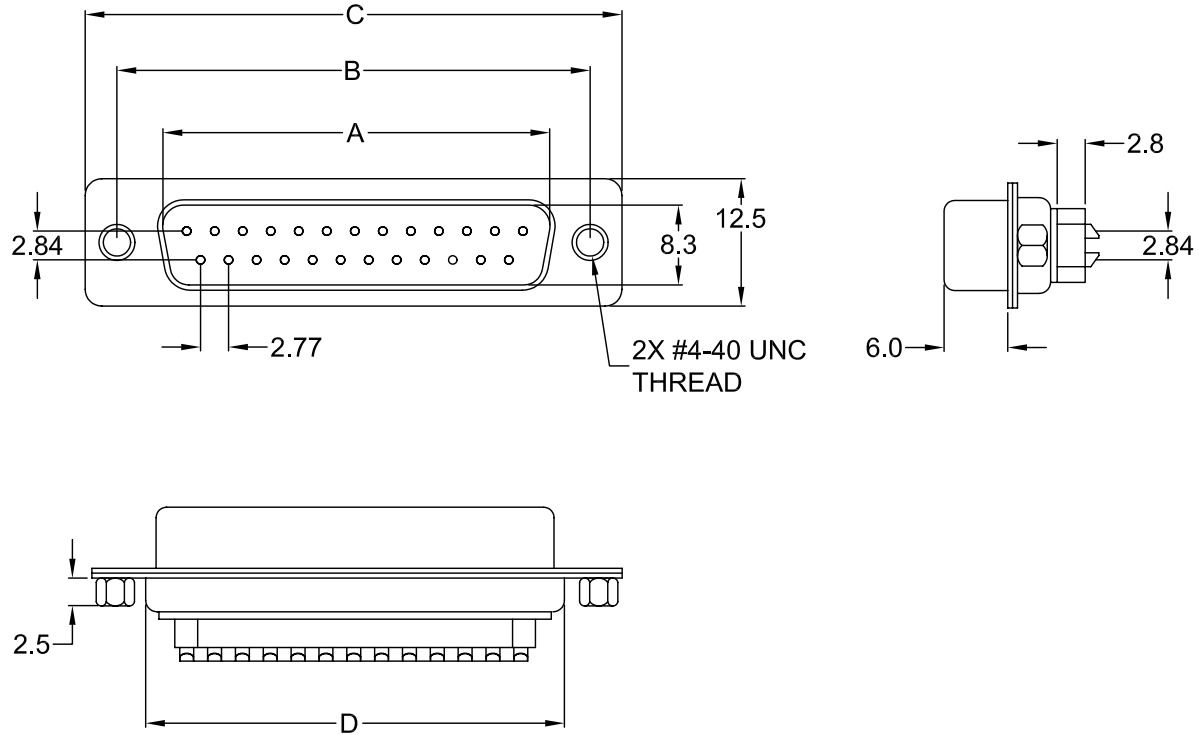
Solder temp: 245°C ± 5°C

ENVIRONMENTAL:

Operating temperature: -55°C To +105°C

NOTE: Replace first XX in part number with number of positions.

POSITION	A	B	C	D
09	16.9	25.0	30.8	19.2
15	25.3	33.3	39.2	27.7
25	39.0	47.1	53.1	41.1
37	55.2	63.5	69.4	57.3



-X-XX: SEE ORDERING CODE FOR OPTIONS

REVISIONS	CHNG	CHK	APPR
	CHANGE		
	REV	DATE	

TOLERANCE UNLESS OTHERWISE SPECIFIED			
X	± 1		
X.X	± 0.4		
X.XX	± 0.20		
DRAWN BY	DF	DATE:	2/15/06
CHECK BY		DATE:	
APPR BY		DATE:	

Power Dynamics, Inc.
 Phone: 973 560-0019 Whippany, New Jersey Fax: 973 560-0076

PART: STRAIGHT FILTERED MALE D-SUB
 SOLDER CUP

PART #: PDF-XXSS-SX-XX

SIZE: A

SCALE: NTS

ALL DIMENSIONS FOR REFERENCE ONLY
 DIMENSIONS ARE IN MILLIMETERS

SHEET 1 of 1

REV:

6

5

4

3

2

1