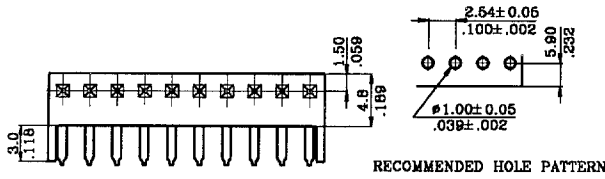


2405 Series 2.54mm(.100") PCB Connector

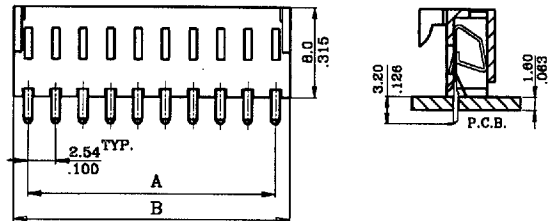
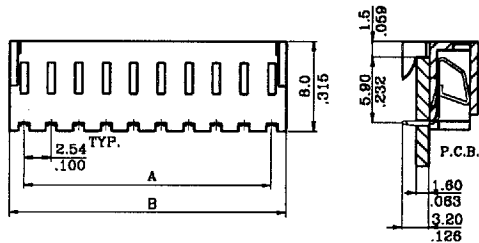
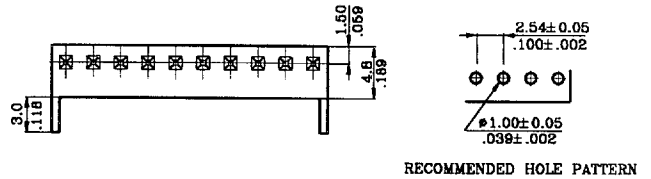


Unit : $\frac{\text{mm}}{\text{inch}}$

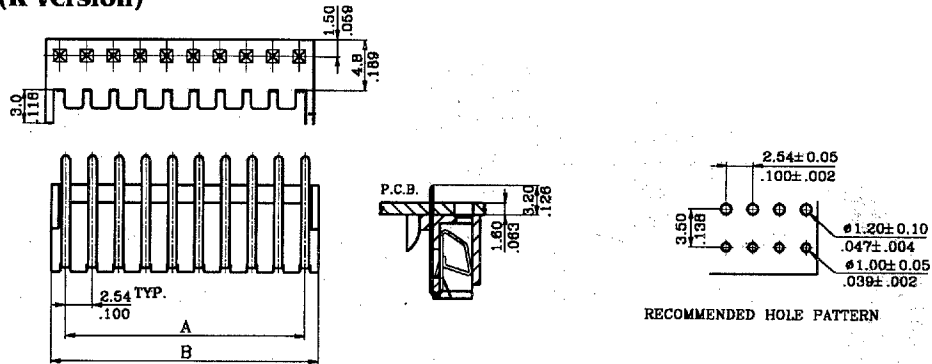
Side Entry (H version)



Top Entry (V version)

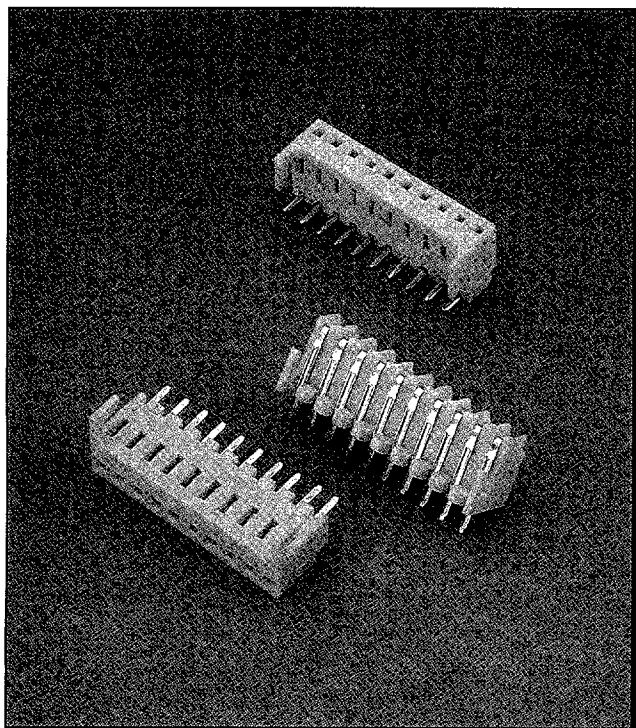


Bottom Entry (R version)



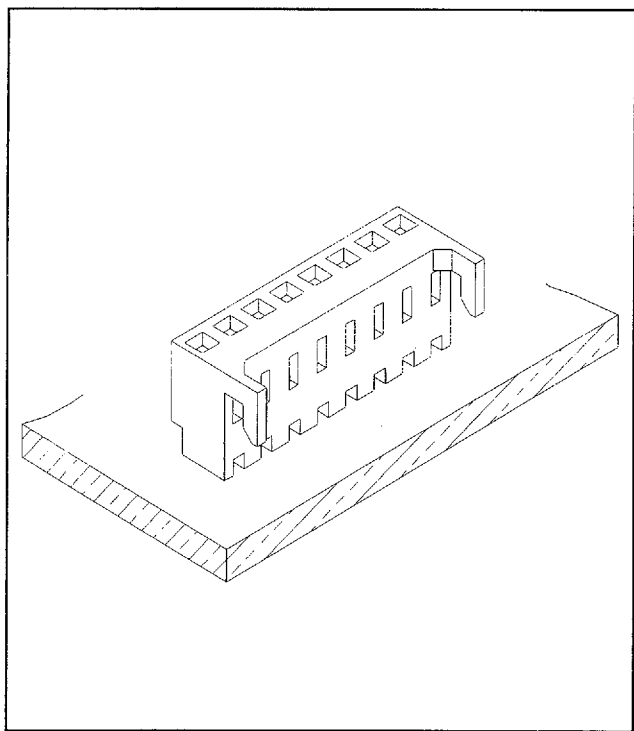
Dimensional & Ordering Information:

Circuits	Part No.			Dimension	
	Top Entry	Side Entry	Bottom Entry	A	B
2	2405S02V000	2405S02H000	2405S02R000	2.54(.100)	5.10(.201)
3	2405S03V000	2405S03H000	2405S03R000	5.08(.200)	7.60(.299)
4	2405S04V000	2405S04H000	2405S04R000	7.62(.300)	10.20(.402)
5	2405S05V000	2405S05H000	2405S05R000	10.16(.400)	12.70(.500)
6	2405S06V000	2405S06H000	2405S06R000	12.70(.500)	15.20(.598)
7	2405S07V000	2405S07H000	2405S07R000	15.24(.600)	17.80(.701)
8	2405S08V000	2405S08H000	2405S08R000	17.78(.700)	20.30(.799)
9	2405S09V000	2405S09H000	2405S09R000	20.32(.800)	22.90(.902)
10	2405S10V000	2405S10H000	2405S10R000	22.86(.900)	25.40(1.000)
11	2405S11V000	2405S11H000	2405S11R000	25.40(1.00)	27.90(1.098)
12	2405S12V000	2405S12H000	2405S12R000	27.94(1.100)	30.50(1.201)
13	2405S13V000	2405S13H000	2405S13R000	30.48(1.200)	33.00(1.299)
14	2405S14V000	2405S14H000	2405S14R000	33.02(1.300)	35.60(1.402)
15	2405S15V000	2405S15H000	2405S15R000	35.56(1.400)	38.10(1.500)
16	2405S16V000	2405S16H000	2405S16R000	38.10(1.500)	40.60(1.598)
17	2405S17V000	2405S17H000	2405S17R000	40.64(1.600)	43.20(1.701)
18	2405S18V000	2405S18H000	2405S18R000	43.18(1.700)	45.70(1.799)
19	2405S19V000	2405S19H000	2405S19R000	45.72(1.800)	48.30(1.902)
20	2405S20V000	2405S20H000	2405S20R000	48.26(1.900)	50.80(2.000)



Features

- ◆ Available in 2 through 20 circuits
- ◆ With locking ramp P.C.Board standoff
- ◆ Tin plated solder tail terminal
- ◆ Plating options are available
- ◆ Nylon 6/6 UL94V-0
- ◆ Accepts 0.64mm(.025") square pin
- ◆ Mates with Leoco 2556,2557,2566 and 2567 header



Specifications

- ◆ Current rating: 3A AC,DC
- ◆ Voltage rating: 250V AC,DC
- ◆ Temperature rating: -25°C ~ +105°C
- ◆ Contact resistance:
 - Initial: 20mΩ max.
 - After environmental test: 40mΩ max.
- ◆ Insulation resistance:
 - Initial: 1,000MΩ min.
 - After humidity and thermal shock test: 500MΩ min.
- ◆ Withstanding voltage: 1,000V AC /minute
- ◆ Applicable PC board thickness: 1.6mm

Standards

- Recognized No. E82349
- Licensed No. R9052132