

TABLE 1					
EDGE MOUNT THICKNESS	"A"	"B"	"C"	BODY	CONTACT
-EM2	.130[3.30] REF	.0670[1.702]	.058[1.47] REF	BTS-XXX-01-D-EM2	T-1S42-01-X
*-EM3	.160[4.06] REF	.0980[2.489]	.088[2.24] REF	BTS-XXX-01-D-EM3	T-1S42-02-X

\* = SEE NOTE 11

No OF POSITIONS  
 -025, -050, -075,  
 \*-100, \*-125, \*-150  
 (PER ROW)

\*SEE NOTE 12

LEAD STYLE  
 -01

PLATING SPECIFICATION

-L: LIGHT SELECTIVE GOLD WITH MATTE TIN TAILS (USE T-1S42-XX-L)  
 -F: FLASH SELECTIVE GOLD WITH MATTE TIN TAILS (USE T-1S42-XX-F) (SEE NOTE 6)  
 -H: HEAVY GOLD (USE T-1S42-XX-H)

EDGE MOUNT THICKNESS  
 -EM2: .064[1.63] ±.004 PCB (USE BTS-XXX-01-D-EM2 & T-1S42-01-X)

-EM3: (USE BTS-XXX-01-D-EM3 & T-1S42-02-X)

SEE NOTE 11

ROW SPECIFICATION

-D: DOUBLE (USE BTS-XXX-01-D-EMX)

DO NOT SCALE FROM THIS PRINT

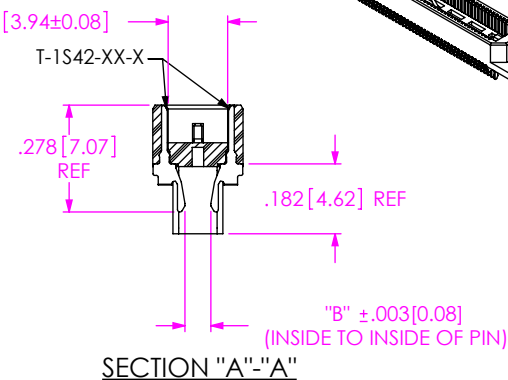
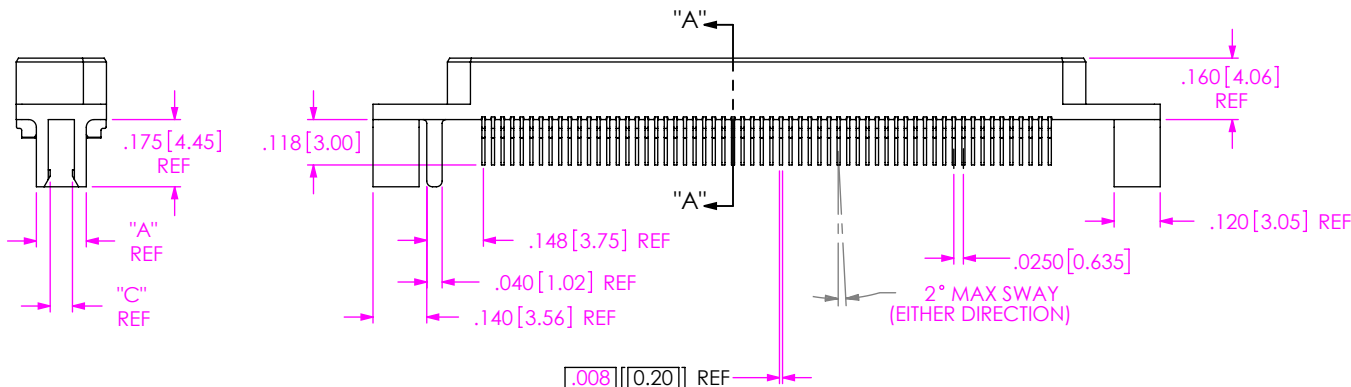
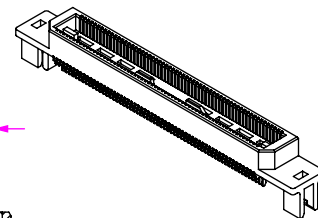
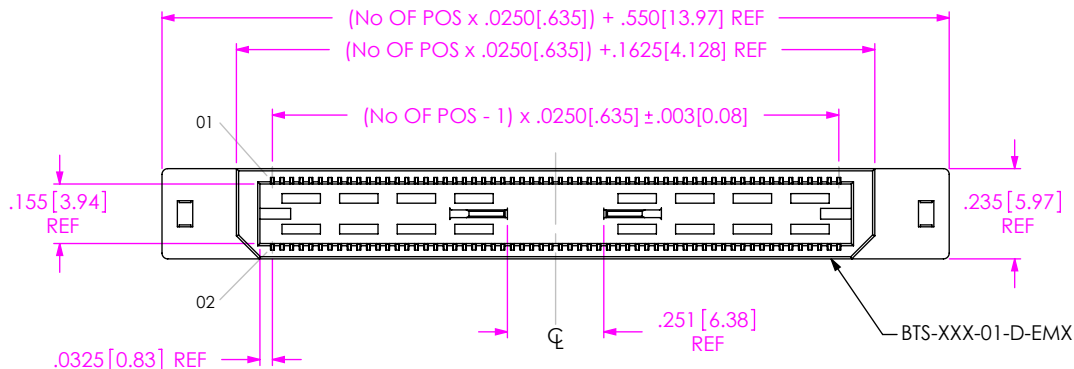
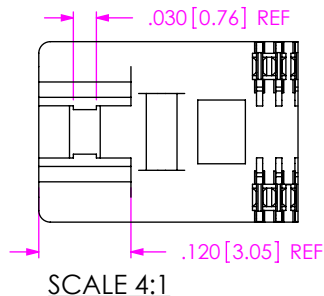
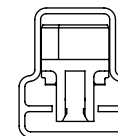


TABLE 2	
No OF POSITIONS	MAX BOW
25 - 75	.004 [ .10]
100 - 150	.006 [ .15]



PACKAGING VIEW

(PARTS TO BE LOADED WITH POSITION #1 IN SAME DIRECTION AS ARROW ON TUBE)



TUBE: PT-1-24-04-15  
 PLUG: TP-09

NOTES:

1. Ⓢ REPRESENTS A CRITICAL DIMENSION.
2. BURR ALLOWANCE: .0015 MAX[.038].
3. MINIMUM PUSHOUT FORCE: 8 OZ.
4. MAXIMUM ALLOWABLE BOW: SEE TABLE 2.
5. PARTS TO BE MOLDED TO POSITION.
6. -L PLATING CAN BE SUBSTITUTED FOR -F PLATING.
7. NOTE DELETED.
8. BOARD THICKNESS TO BE MEASURED FROM SOLDER PAD TO SOLDER PAD.
9. SEE [http://www.samtec.com/processing/edgemt\\_tectalk/index.htm](http://www.samtec.com/processing/edgemt_tectalk/index.htm) FOR PROCESSING EDGE MOUNT PARTS TO BOARD.
10. NOTE DELETED.
11. -EM3 IS NOT A STANDARD OFFERING; AVAILABLE AS AN ASP ONLY. PLEASE CONTACT SAMTEC INTERCONNECT PROCESSING GROUP WITH ORDER INQUIRIES.
12. FOR NEW APPLICATIONS REQUIRING THESE POSITIONS, PLEASE CONTACT SAMTEC INTERCONNECT PROCESSING GROUP.

UNLESS OTHERWISE SPECIFIED, DIMENSIONS ARE IN INCHES.  
 TOLERANCES ARE:  
 DECIMALS ANGLES  
 .XX: ±.01 [.3]  
 .XXX: ±.005 [.13]  
 .XXXX: ±.0020 [.051]

PROPRIETARY NOTE  
 THIS DOCUMENT CONTAINS CONFIDENTIAL AND PROPRIETARY INFORMATION AND ALL DESIGN, MANUFACTURING, REPRODUCTION, USE, PATENT RIGHTS AND SALES RIGHTS ARE EXPRESSLY RESERVED BY SAMTEC, INC. THIS DOCUMENT SHALL NOT BE DISCLOSED, IN WHOLE OR PART, TO ANY UNAUTHORIZED PERSON OR ENTITY NOR REPRODUCED, TRANSFERRED OR INCORPORATED IN ANY OTHER PROJECT IN ANY MANNER WITHOUT THE EXPRESS WRITTEN CONSENT OF SAMTEC, INC.

MATERIAL: DO NOT SCALE DRAWING SHEET SCALE: 2:1  
 INSULATOR: LCP, COLOR: BLACK  
 TERMINAL: PHOS BRONZE

DESCRIPTION:  
 .5mm TERMINAL ASSEMBLY, EDGE MOUNT  
 DWG. NO. **BTS-XXX-01-X-D-EMX**  
 BY: KEVIN B 08/16/00 SHEET 1 OF 1



520 PARK EAST BLVD, NEW ALBANY, IN 47150  
 PHONE: 812-944-6733 FAX: 812-948-5047  
 e-Mail: info@SAMTEC.com code: 53322