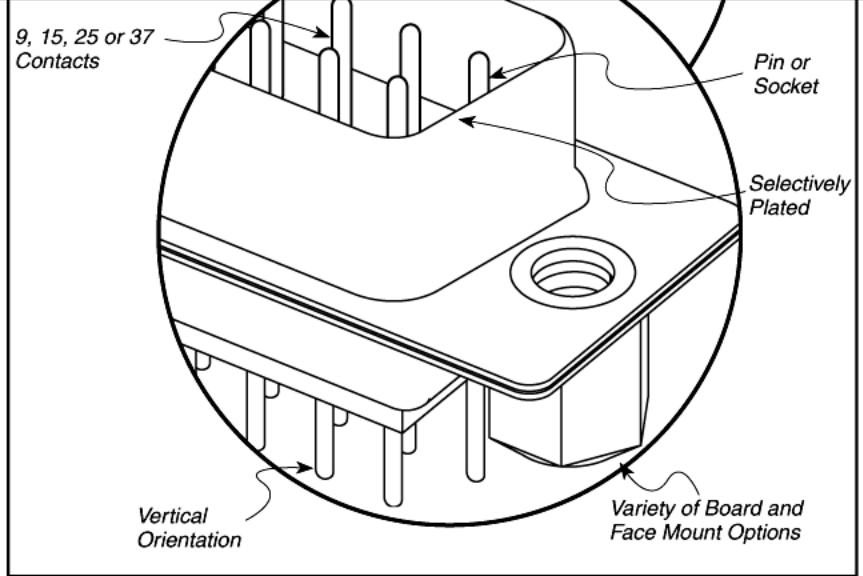


VERTICAL D-SUB DSM-VT SERIES

SPECIFICATIONS

For complete specifications see www.samtec.com?DSM-VT

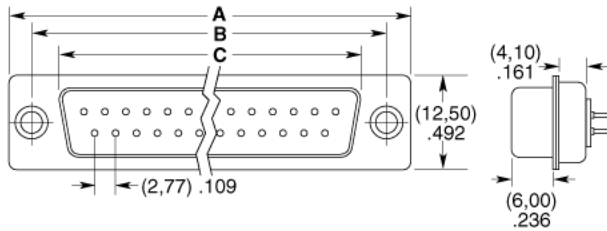
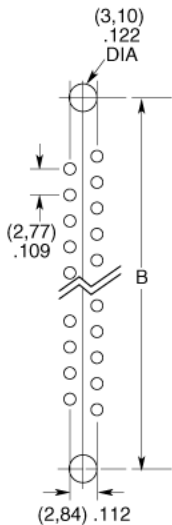
- Insulator Material:**
Black High Temperature Thermoplastic
- Pin Material:**
Copper Alloy
- Socket Material:**
Phosphor Bronze
- Shell Material:**
Steel
- Operating Temp Range:**
-55°C to +105°C
- Plating:**
Gold Flash on Contacts, Nickel on Shell and Tin-Lead on Tails
- Current Rating:**
1 A per contact
- Voltage Rating:**
40 VAC
- Contact Resistance:**
20 m max
- Minimum Cycles:**
1000



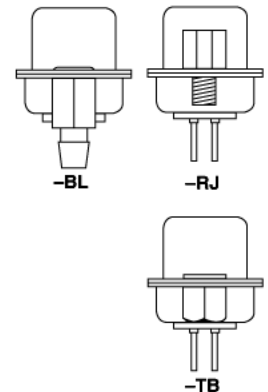
DSM	VT	SHELL SIZE POSITIONS	GENDER	PLATING	BOARD MOUNT	FACE MOUNT
		<ul style="list-style-type: none"> -E-09 = 9 Positions -A-15 = 15 Positions -B-25 = 25 Positions -C-37 = 37 Positions 	<ul style="list-style-type: none"> -P = Pin -S = Socket 	<ul style="list-style-type: none"> -F = Gold Flash on Mating Area, Tin-Lead on Tails -L = 10µ" (0.25µm) Gold on Mating Area, Tin-Lead on Tails -S = 30µ" (0.76µm) Gold on Mating Area, Tin-Lead on Tails 	<ul style="list-style-type: none"> -BL = Board Locks -TB = Threaded Bushing 	<ul style="list-style-type: none"> -RJ = Removable #4-40 Jackscrews (Leave blank for no face mount)

Processing:

Suggested PCB Layouts:
For reference only. Please contact Samtec or go to www.samtec.com?DSM-VT for recommended PCB layout.



SHELL SIZE- POSITIONS	A	B	C (-P)	C (-S)
-E-09	± (0,25) .010	± (0,25) .010	± (0,25) .010	± (0,25) .010
-A-15	(30,81) 1.213	(24,99) .984	(16,92) .666	(16,33) .643
-B-25	(39,14) 1.541	(33,32) 1.312	(25,25) .994	(24,66) .971
-C-37	(53,04) 2.088	(47,04) 1.852	(38,96) 1.534	(38,38) 1.511
	(69,32) 2.729	(63,50) 2.500	(55,43) 2.182	(54,84) 2.159



Due to technical progress, all designs, specifications and components are subject to change without notice.

WWW.SAMTEC.COM