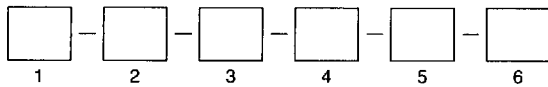




ORDERING INFORMATION



1. DESCRIPTION

PRA = Plastic Right Angle w/Metal Shield

2. FOOTPRINT

590 = .590"

3. POSITION

- 09 = 9 contacts
- 15 = 15 contacts
- 25 = 25 contacts
- 37 = 37 contacts

4. GENDER

- P = Plug (Male)
- S = Socket (Female)

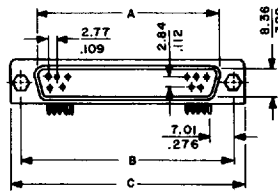
5. MOUNTING OPTIONS

- A = Board Anchor/#4-40 Insert
- AJ = Board Anchor/Jackscrews
- AH = Board Anchor/Thru Hole
- B = Bottom Ground/#4-40 Insert
- BJ = Bottom Ground/Jackscrews
- BH = Bottom Ground/Thru Hole
- T = Top Ground/#4-40 Insert
- TJ = Top Ground/Jackscrews
- TH = Top Ground/Thru Hole

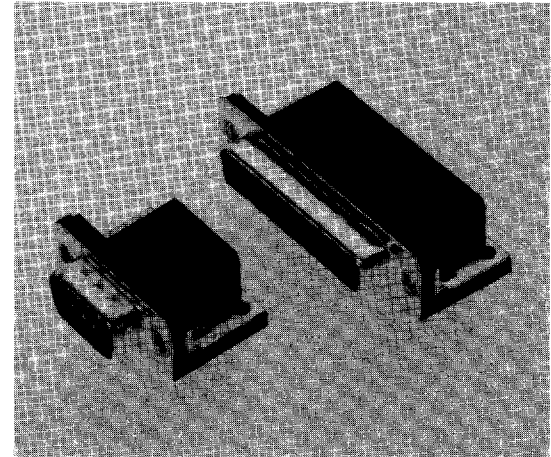
- HA = Half Flange/Board Anchor/Flush Insert
- HJ = Half Flange/Board Anchor/Jackscrews
- HAH = Half Flange/Board Anchor/Thru Hole

6. PLATING

- 04 = Standard Gold Flash
- 30 = .000030" Gold



.590" PLASTIC RIGHT ANGLE



FEATURES:

- Standard Insulator color, black
- Standard shell finish, tin
- Many mounting and grounding options
- Plugs have grounding indents

PRA SERIES SPECIFICATIONS:

MATERIALS:

- Contacts Pin - copper alloy, Socket - phosphor bronze
- Plating Gold over nickel
- Shells Steel, tin plated
- Insulator Glass filled polyester, UL 94V-0

ELECTRICAL:

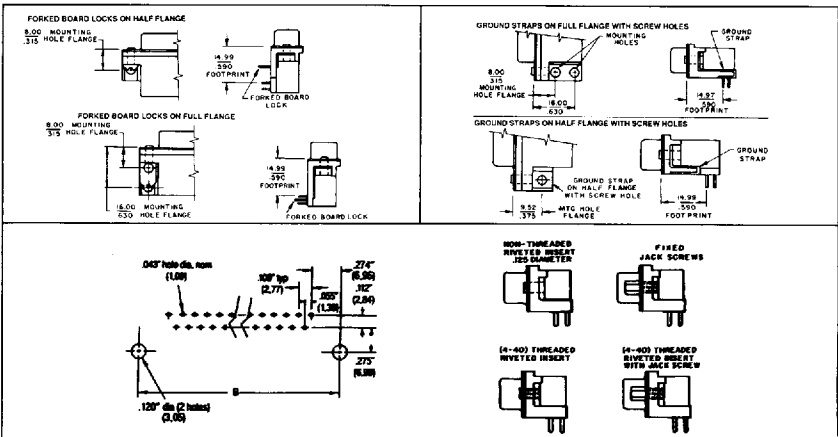
- Voltage Rating 300V AC rms
- Current Rating 5 amps per contact
- Insulation Resistance 5 megohms min.
- Contact Resistance 5 milliohms max.

DIMENSIONAL DATA

All dimensions in (inches) and millimeters.

SOCKET (FEMALE)			
No. of Contact Pos.	Dimensions		
	A	B	C
9	16.33 (.643)	24.99 (.984)	30.81 (1.123)
15	24.66 (.971)	33.32 (1.312)	39.14 (1.541)
25	38.38 (1.511)	47.04 (1.852)	53.04 (2.088)
37	54.84 (2.159)	63.50 (2.500)	69.32 (2.729)

PLUG (MALE)			
No. of Contact Pos.	Dimensions		
	A	B	C
9	16.92 (.666)	24.99 (.984)	30.81 (1.123)
15	25.25 (.994)	33.32 (1.312)	39.14 (1.541)
25	38.96 (1.534)	47.04 (1.852)	53.04 (2.088)
37	55.42 (2.182)	63.50 (2.500)	69.32 (2.729)



*Dimensions are in inches