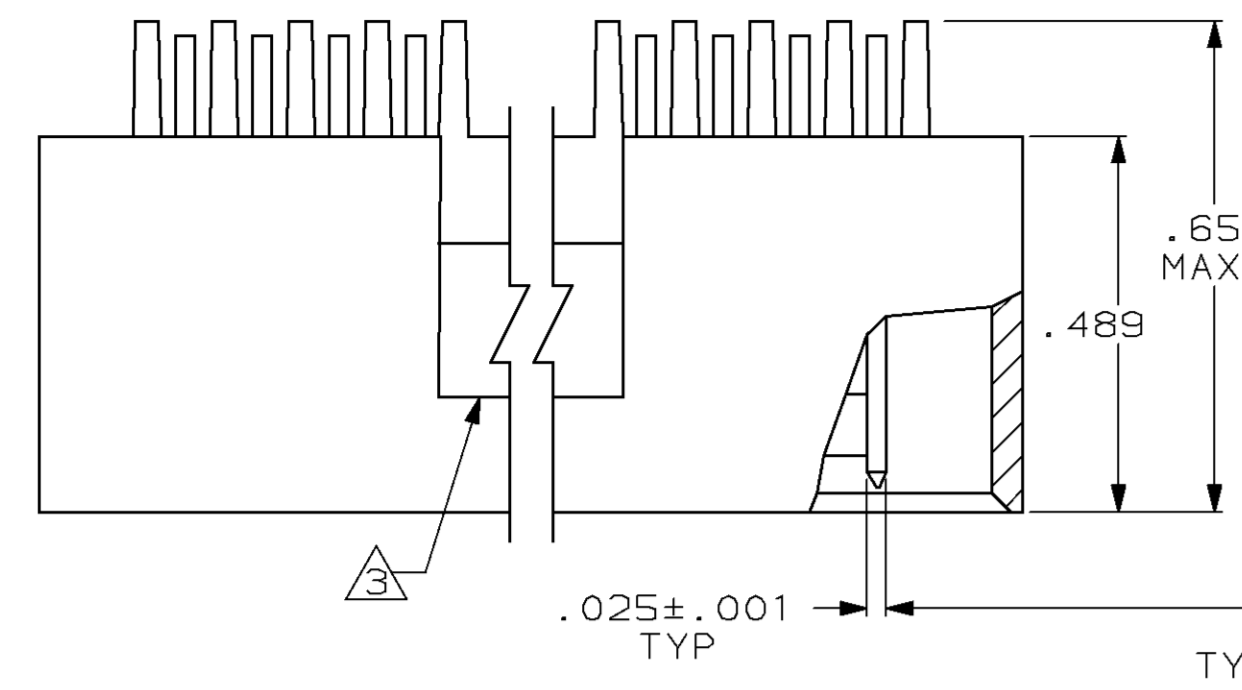
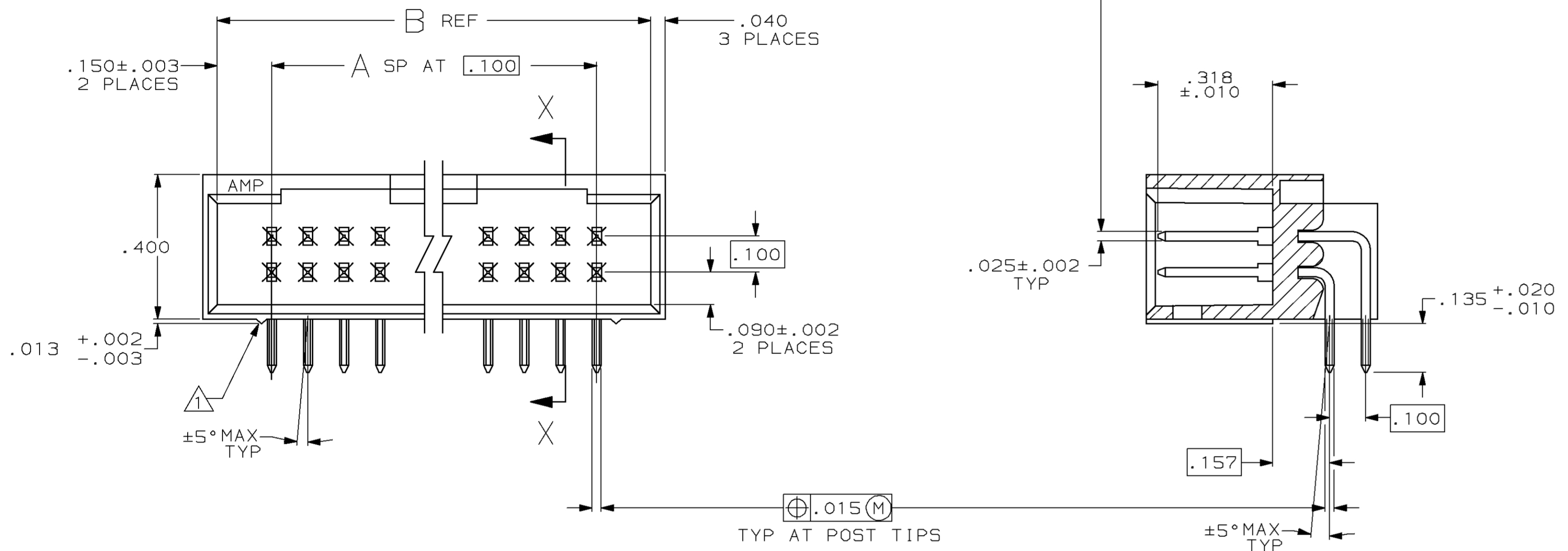


DRAWING MADE IN THIRD ANGLE PROJECTION  
 THIS DRAWING IS UNPUBLISHED. RELEASED FOR PUBLICATION APRIL 4, 1983  
 © COPYRIGHT 1983 BY AMP INCORPORATED, HARRISBURG, PA. ALL INTERNATIONAL RIGHTS RESERVED. AMP PRODUCTS MAY BE COVERED BY U.S. AND FOREIGN PATENTS AND/OR PATENTS PENDING.

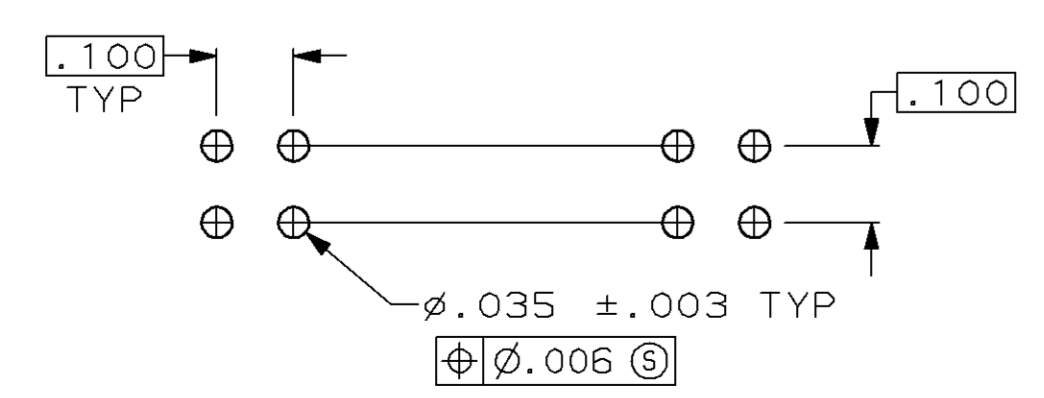
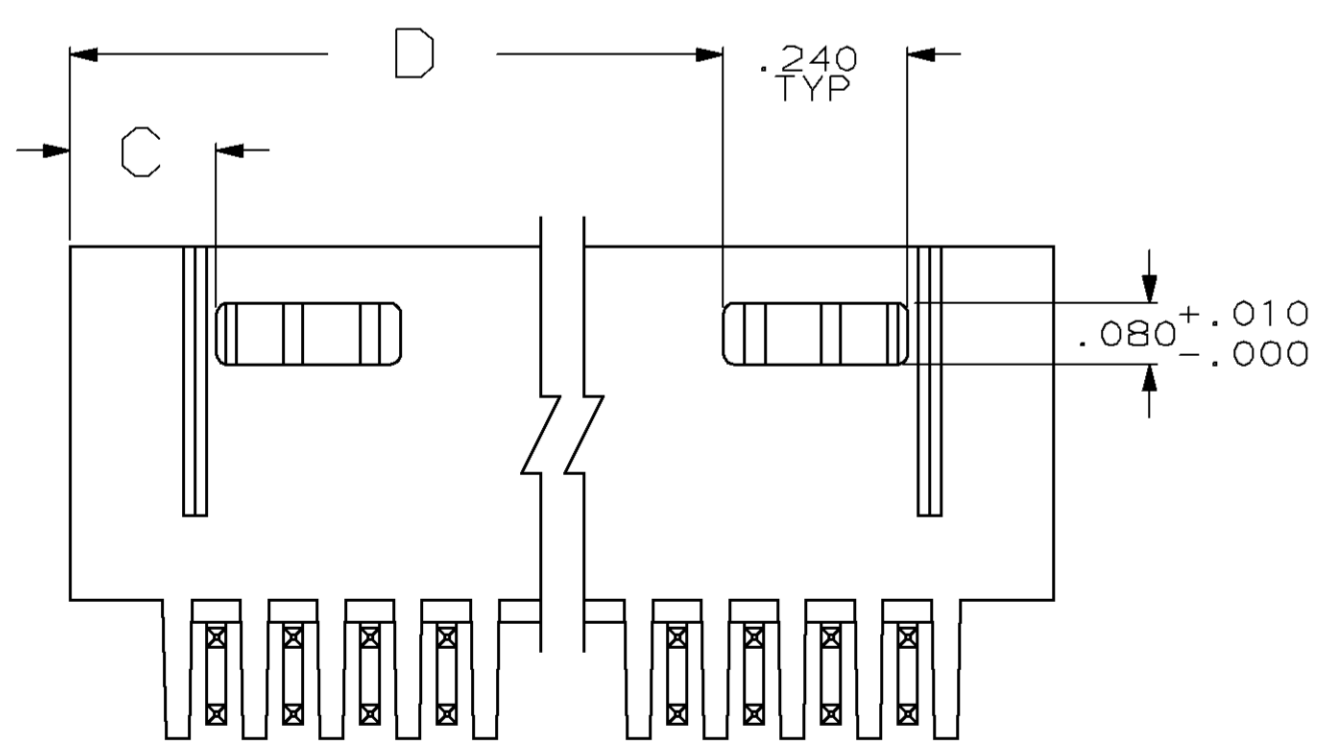
MOD		LOC		DIST		P		F		REVISIONS				
MOD	LOC	DIST	P	F	ZONE	LTR	DESCRIPTION	DATE	APPD					
25	AD	39					D	REDRAW ON CAD PER ECN AR2699	10-11-89					
							E	REV LOC & DIST AD-4171	3-90	BF				
							F	ECN AD-4707	08/02/90	KH				
							G	REV PER 0010-0981-93 TT	10-15-93	JM				
							H	REV.PER ECN.0010-0051-95 TH	3/16/95	JK				
							J	REV PER 0010-0814-96	6-9-96	SS				
							K	REV PER 0310-0040-96	12-14-96	SAS				
							L	REV PER 0310-0431-97	18JUL98	SAS				



- △ 1 STAND-OFFS:  
8 THRU 18 POS (2) REQD LOCATED AS SHOWN OUTBOARD OF END CIRCUITS  
20 THRU 38 POS (3) REQD LOCATED OUTBOARD OF END CIRCUITS PLUS (1) CENTERED  
40 THRU 72 POS (4) REQD LOCATED OUTBOARD OF END CIRCUITS WITH (2) EVENLY SPACED WITHIN THE REMAINING LENGTH
- △ 2 OBSOLETE PART NUMBER.
- △ 3 ACCESS SLOT.



SECTION X-X



RECOMMENDED HOLE LAYOUT

3.490	.190	3.800	35	72	3-87577-3
3.390	.190	3.700	34	70	3-87577-2
3.290	.190	3.600	33	68	3-87577-1
3.190	.190	3.500	32	66	3-87577-0
3.090	.190	3.400	31	64	2-87577-9
2.990	.190	3.300	30	62	2-87577-8
2.890	.190	3.200	29	60	2-87577-7
2.790	.190	3.100	28	58	2-87577-6
2.690	.190	3.000	27	56	2-87577-5
2.590	.190	2.900	26	54	2-87577-4
2.490	.190	2.800	25	52	2-87577-3
2.390	.190	2.700	24	50	2-87577-2
2.290	.190	2.600	23	48	2-87577-1
2.190	.190	2.500	22	46	2-87577-0
2.090	.190	2.400	21	44	1-87577-9
1.990	.190	2.300	20	42	1-87577-8
1.890	.190	2.200	19	40	1-87577-7
1.790	.190	2.100	18	38	1-87577-6
1.690	.190	2.000	17	36	1-87577-5
1.590	.190	1.900	16	34	1-87577-4
1.490	.190	1.800	15	32	1-87577-3
1.390	.190	1.700	14	30	1-87577-2
1.290	.190	1.600	13	28	1-87577-1
1.190	.190	1.500	12	26	1-87577-0
1.090	.190	1.400	11	24	87577-9
.990	.190	1.300	10	22	87577-8
.890	.190	1.200	9	20	87577-7
.790	.190	1.100	8	18	87577-6
.690	.190	1.000	7	16	87577-5
.590	.190	.900	6	14	87577-4
.490	.190	.800	5	12	87577-3
.390	.190	.700	4	10	87577-2
.290	.190	.600	3	8	87577-1

D	C	B	A	NO OF POSN	ASSEMBLY PART NUMBER

UNLESS OTHERWISE SPECIFIED DIMENSIONS ARE IN INCHES TOLERANCES ON: 2 PL DEC ±-.005 3 PL DEC ±-.005 ANGLES ±-	DR 10-11-89 J GALLUCCI	<b>AMP</b> AMP INCORPORATED Harrisburg, Pa. 17105  NAME HDR ASSY, MOD II, .100X.100∅ .025 SQ POST, RT ANGLE W/DETENTS AND STAND-OFFS
	CHK 10-25-89 R. ELICKER	
APPD 10-25-89 R. ELICKER		
APPD 10-25-89 FLINCHBAUGH		
MATERIAL: HOUSING: FLAME RETARDANT THERMOPLASTIC, COLOR-BLACK	PRODUCT SPEC	SIZE
CONTACTS: PHOS BRONZE	APPLICATION SPEC	FSCM NO
FINISH: CONTACTS: .000100-.000200 BRIGHT TIN OVER .000050 NICKEL	WEIGHT	DRAWING NO

SCALE: 4:1 SHEET: 1 OF 1

- [Home](#)
- [Part Number Search](#)
- [Text Search](#)
- [Alternate Part Search](#)
- [Multiple Part Comparison](#)
- [Alphabetical Search](#)
- [Brand Search](#)
- [Industry Product Search](#)
- [Product Type Search](#)
- [Product Family Search](#)
- [Competitor Cross Reference](#)
- [Document Number Search](#)
- [Lead Free Solutions](#)
- [Help/Glossary](#)

<b>Current Brand View</b>	<a href="#">View All Tyco Electronics Brands</a>
<b>AMP</b>	Click to activate links to all other products

## AMPMODU

### **.100 Centerline Through Hole Headers**

**AMP** **87577-2** -- 1 of 2 products Active [Active](#)

**(Tyco Electronics P/N: 87577-2)**

<a href="#">Next</a>	<a href="#">Sales Information</a>	<a href="#">AMP ACES</a>	<a href="#">Step Search Screen</a>
	<a href="#">Related CAD Geometry</a>	<a href="#">Related Documents</a>	<a href="#">General Information</a>
		<a href="#">Pricing</a>	<a href="#">Product Availability</a>

**Please use the customer drawing for all design activity.**

- **Customer Drawing: 87577, Rev. L**  
 Document Title: HDR ASSY,MOD II,.100X.100@22  
 .025 SQ POST,RT ANGLE W/DETENTS AND  
 STAND-OFFS

189134.pdf [189134.pdf](#) (76K)

*The photographs and/or line drawings below are representative images of a product for viewing purposes only.*

[Product Photo](#)

**Searchable Features:**

<b>Brand:</b>	AMP
<b>Header Type:</b>	Shrouded
<b>No. of Rows:</b>	Dual
<b>No. of Positions:</b>	10
<b>Profile:</b>	Standard
<b>Shrouded End Dimension (mm [in]):</b>	3.81 [.150]
<b>Mount Angle:</b>	Right Angle
<b>PCB Retention Feature:</b>	Without
<b>Surface Mount Compatible:</b>	No
<b>Contact Mating Area Plating:</b>	Bright Tin
<b>Board Standoff:</b>	With
<b>Mounting Ears:</b>	Without
<b>Panel Attachment:</b>	No
<b>Mating Connector Lock:</b>	With
<b>Mating Connector Lock Type:</b>	Detent Windows
<b>High Temperature Housing:</b>	No
<b>Housing Style:</b>	4-Sided
<b>High Speed Serial Data Connector:</b>	No
<b>Termination Post Length (mm [in]):</b>	3.43 [.135]

**Other Properties:**

<b>Centerline Spacing (mm [in]):</b>	2.54 x 2.54 [.100 x .100]
<b>Post Size (mm [in]):</b>	0.64 [.025] Sq.
<b>Mating Post Length (mm [in]):</b>	8.08 [.318]
<b>Contact Material:</b>	Phosphor Bronze
<b>Solder Tail Plating:</b>	Bright Tin
<b>Housing Material:</b>	Thermoplastic
<b>Housing Color:</b>	Black
<b>Housing Flammability Rating:</b>	UL 94V-0

[Copyright](#) and [Privacy Statement](#)

Visit [Tyco International, Ltd.](#)

[Products](#) | [Brands](#) | [Industries](#) | [Customer Service](#) | [About](#) | [Home](#)