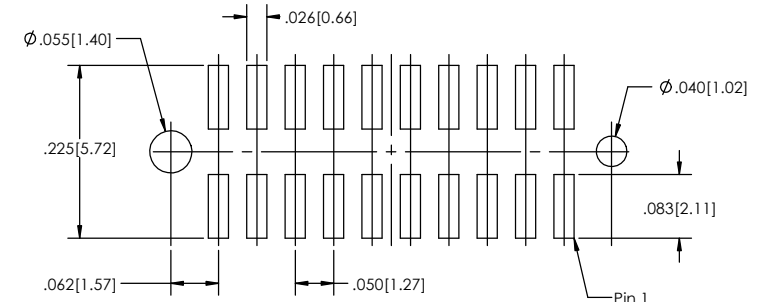
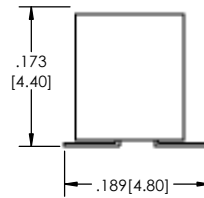


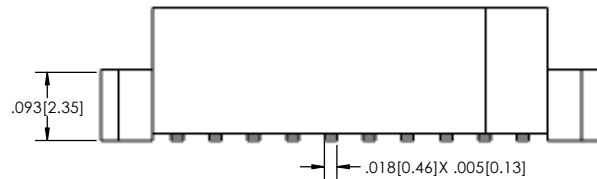
**Recommended P.C. Board Layout**  
SCALE 8:1



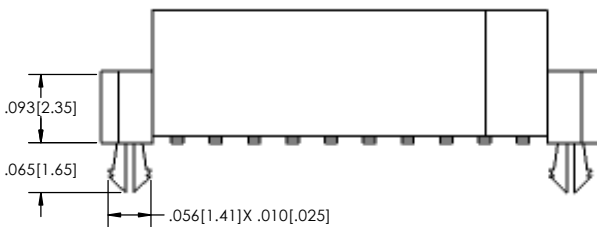
**WITHOUT LOCKING CLIP OR ALIGNMENT PIN**



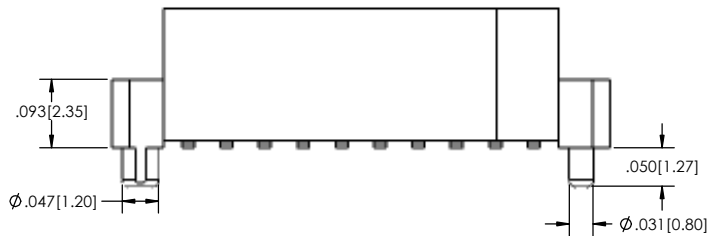
**SIDE EARS OPTION (-SE)**



**LOCKING CLIP OPTION (-C)**



**ALIGNMENT PIN OPTION (-AP)**



PSSSHM-5 **XX** - **D** - **06** - **XX** - **XX** - **X** - **XX** - **X** - **LF**  
**(A)** **(B)** **(C)** **(D)** **(E)** **(F)** **(G)** **(H)** **(I)**

- A. Pins Per Row  
- 05 through 50
- B. Row Specification  
- D= Double Row
- C. Surface Mount
- D. Plating Options  
- See Plating Options below
- E. Alignment Pin Option  
- Leave blank if not needed  
- AP= With
- F. Locking Clip  
- Leave blank if not needed  
- C= With
- G,H. Packing Information  
- TR-P= Tape and Reel with Plastic Pick and Place pad  
- TB-P= Tube with Plastic Pick and Place pad  
- TB-0= Tube without Pick and Place pad  
- If left blank, packaging at MLE's discretion  
Pad may be metal, mylar or plastic

Mates with:  
PTSHS  
PTSHSM

**I. Lead Free**

Plating options	
G	10 $\mu$ Gold Contact Area/ Flash on Tail
T	Matte Tin All Over
GT	10 $\mu$ Gold Contact Area/ Matte Tin on Tail
H	30 $\mu$ Gold on Contact Area/ Matte Tin on Tail
F	Gold Flash over Entire Pin
FT	Gold Flash on Contact Area/ Matte Tin on Tail

Specifications:  
 Current Rating: 1.0 Ampere  
 Insulation Resistance: 1000M Ohms Min.  
 Dielectric Withstanding: 300V AC  
 Contact Resistance: 20M Ohms Max.  
 Operation Temperature: -40°C to +105°C  
 Max. Process Temperature  
 Peak: 260°C up to 10 secs.  
 Process: 230°C up to 60 secs.  
 Wave: 260°C up to 6 secs.  
 Reflow: 260°C up to 10 secs.  
 Manual Solder: 350°C up to 5 secs.

Materials:  
 Contact Material: Phosphor Bronze  
 Insulator Material: Nylon 6T  
 Plating: Au or Sn over 50 $\mu$ " (1.27) Ni  
 Tails may be clipped to achieve specific dimensions.

Products cut to specific sizes are uncancellable/ nonreturnable.  
 Parts are subject to change without notice.



**PROPRIETARY AND CONFIDENTIAL**  
 THE INFORMATION CONTAINED IN THIS DRAWING IS THE SOLE PROPERTY OF Major League Electronics. ANY REPRODUCTION IN PART OR AS A WHOLE WITHOUT THE WRITTEN PERMISSION OF Major League Electronics IS PROHIBITED.

UNLESS OTHERWISE SPECIFIED:		DRAWN		NAME		DATE	
DIMENSIONS ARE IN INCHES		EOW		02/17/14			
TOLERANCES:		CHECKED		GWE		02/17/14	
ONE DECIMALS $\pm .100$		ENG APPR.					
TWO DECIMALS $\pm .100$		MFG APPR.					
THREE DECIMALS $\pm .005$		D.A.					
FOUR DECIMALS $\pm .002$		INTERPRET GEOMETRIC TOLERANCING PER:		ADDRESS:		TITLE: PSSSHM-5 SERIES	
NEXT ASSY		USED ON		FINISH		SIZE DWG. NO.	
APPLICATION		DO NOT SCALE DRAWING		MATERIAL		C	
				4235 Earnings Way New Albany, IN 47150 Phone: 812-944-7244 Fax: 812-944-7268 e-Mail: <a href="mailto:mle@ml-electronics.com">mle@ml-electronics.com</a>		REV A	
						SCALE 8:1	
						SHEET 1 OF 1	

