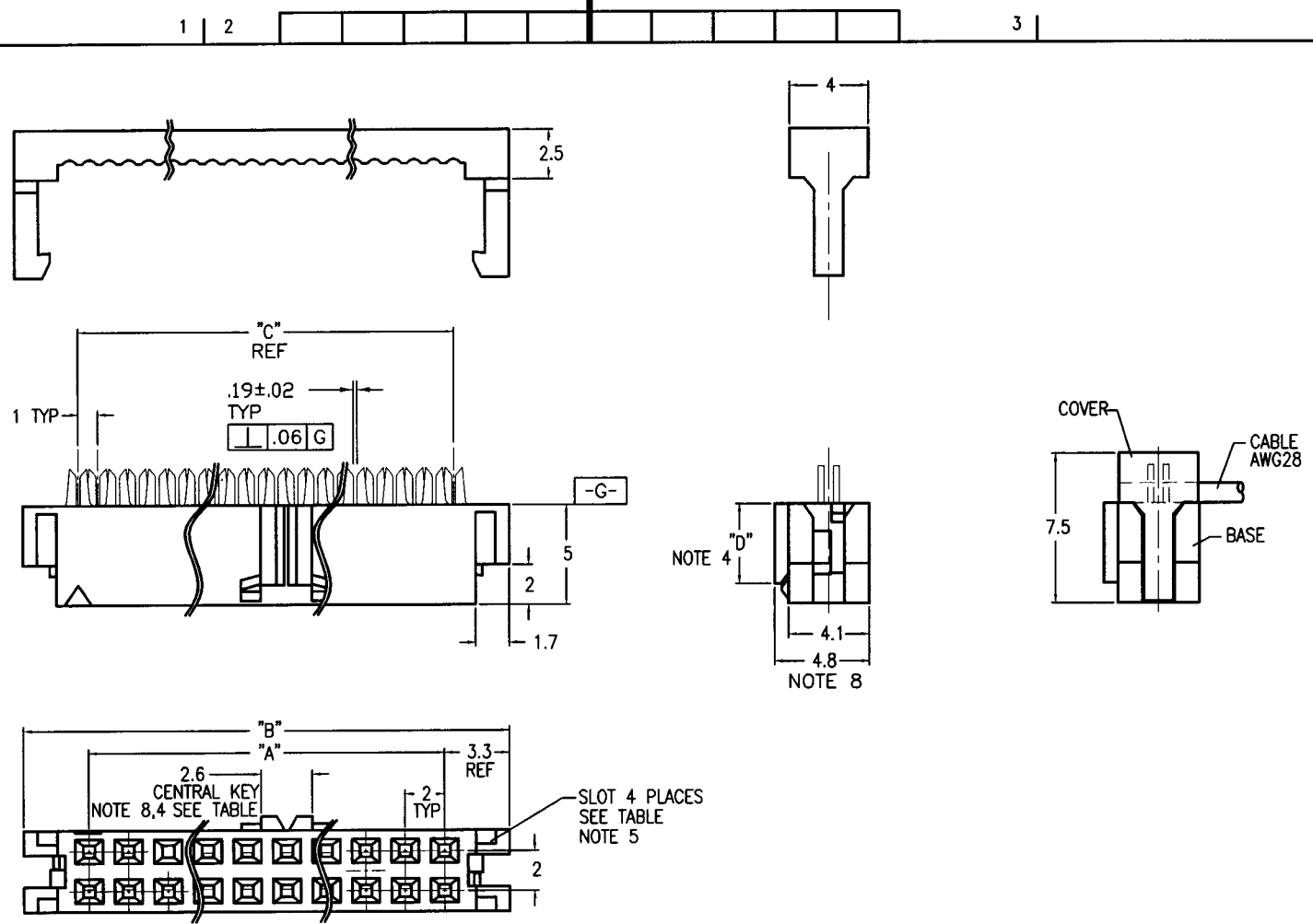


Tous droits strictement réservés. Reproduction ou communication a des tiers interdite sous quelque forme que ce soit sans autorisation écrite du propriétaire. Propriété de ©BERG ELECTRONICS. Droits de reproduction BERG ELECTRONICS INC.

All rights strictly reserved. Reproduction or issue to third parties in any form whatever is not permitted without written authority from the proprietor. Property of ©BERG ELECTRONICS Copyright BERG ELECTRONICS INC.

**BERG**  
ELECTRONICS

PRODUCT NO.  
SEE TABLE



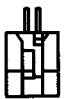





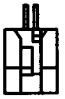
mat'l. code SEE NOTES 1 & 2				tolerances unless otherwise specified		CUSTOMER COPY	BERG ELECTRONICS	
ltr	ecn no	dr	date	linear	.X ±.3		projection 	title
A	V31374	MSC	11/1/93	linear	.XX ±.13	2MM IDC		
B	V40315	MSC	2/22/94	angles	.XXX ±.051	(0.76u / 30u" m GXT)		
C	V40755	MSC	5/20/94	angles	0° ±2"	mm 	product family	code
D	V61624	LSS	11/11/96	dr	M.CHIBANA		10/21/91	IDC
E	V70496	MSC	6/4/97	enr	N.YAMAMOTO	10/24/91	size  dwg no	sheet
				chr	M.YAMADA	10/24/91	scale	1 of 2
				appd	T.IZUMIDA	10/24/91	A4	90919
sheet index	revision sheet	E	E					
		1	2					

Tous droits strictement réservés. Reproduction ou communication à des tiers interdite sous quelque forme que ce soit sans autorisation écrite du propriétaire.  
 Propriété de © BERG ELECTRONICS. Droits de reproduction BERG ELECTRONICS INC.

**BERG**  
 ELECTRONICS

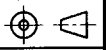
All rights strictly reserved. Reproduction or issue to third parties in any form whatever is not permitted without written authority from the proprietor.  
 Property of © BERG ELECTRONICS Copyright BERG ELECTRONICS INC.

PRODUCT NUMBER	POS.	"A"	"B"	"C"
	2x 1			
	2x 2			
90919-X06	2x 3	4	10.6	5
90919-X08	2x 4	6	12.6	7
90919-X10	2x 5	8	14.6	9
90919-X12	2x 6	10	16.6	11
90919-X14	2x 7	12	18.6	13
90919-X16	2x 8	14	20.6	15
90919-X18	2x 9	16	22.6	17
90919-X20	2x10	18	24.6	19
90919-X22	2x11	20	26.6	21
90919-X24	2x12	22	28.6	23
90919-X26	2x13	24	30.6	25
90919-X28	2x14	26	32.6	27
90919-X30	2x15	28	34.6	29
	2x16			
90919-X34	2x17	32	38.6	33
90919-X36	2x18	34	40.6	35
	2x19			
90919-X40	2x20	38	44.6	39
	2x21			
90919-X44	2x22	42	48.6	43
	2x23			
90919-X48	2x24	46	52.6	47
90919-X50	2x25	48	54.6	49
	2x26			
	2x27			
	2x28			
	2x29			
90919-X60	2x30	58	64.6	59
	2x31			
90919-X64	2x32	62	68.6	63
	2x33			
90919-X68	2x34	66	72.6	67
	2x35			
	2x36			

							
	"D"=4	"D"=0.4		4 PLACES			
90919-9XX	○			○			○
90919-8XX	○			○			○
90919-7XX		○		○			○
90919-6XX		○		○			○
90919-5XX			○	○	○	○	
90919-4XX			○	○	○	○	
90919-3XX		○		○	○	○	
90919-2XX		○		○	○	○	
90919-1XX	○			○	○	○	
90919-0XX	○			○	○	○	
PRODUCT CODE	WITHOUT	WITH	WITH	WITHOUT	WITH	WITHOUT	WITH
	CENTRAL	KEY	NOTE 4	SLOT	NOTE 5	FRICTION BUMPS	LATCH NOTE 7

NOTE :

- ① MATL : TERMINAL PHOSPHOR BRONZE  
 BASE COVER ... G.F.PBT.U194V-0.BLACK
- ② PLATING : 0.76u m MIN.GXT ON CONTACT AREA  
 NICKEL 1.27u m MIN UNDERPLATING ALL OVER.
- 3 RECOMMENDED CABLE SIZE : AWG28
- ④ SHOWS CENTRAL KEY.  
 SEE TABLE
- ⑤ SHOWS SLOT  
 SEE TABLE
- 6 GENERAL TOLERANCE : ±0.25
- ⑦ SHOWS FRICTION LATCH BUMPS. SIZE 2X3 & 2X4  
 DO NOT HAVE TRIANGLE SHOWING POS#1.
- ⑧ KEY WIDTH AND THICKNESS ARE REDUCED ON 2x3 SIZE CONNECTORS. (WIDTH=2.0, THICKNESS=4.6).

mat'l. code				tolerances unless otherwise specified		CUSTOMER COPY		<b>BERG ELECTRONICS</b>			
ltr	ecn no	dr	date	linear	.X ±.3	projection	title				
E					.XX ±.13			2MM IDC			
					.XXX ±.051			(0.76u /30u" m GXT)			
				angles	0° ±2°	mm	product family	IDC	code		
				dr	M.CHIBANA	10/21/91	size	dwg no			
				enr	N.YAMAMOTO	10/24/91	scale	A4	90919		
				chr	M.YAMADA	10/24/91				sheet	2 of
				appd	T.IZUMIDA	10/24/91					
sheet index	revision sheet										