

# Customer Information Sheet

DRAWING No.: M80-891XXXX

SHEET 2 OF 2

IF IN DOUBT - ASK



NOT TO SCALE

THIRD ANGLE PROJECTION

ALL DIMENSIONS IN mm

## SPECIFICATION

### MATERIAL:

MOULDING = GLASS-FILLED POLYESTER, UL94V-0

CLIP = BERYLLIUM COPPER

SHELL = BRASS

### FINISH:

#### CONTACTS:

01 = 0.30µ GOLD CLIP, 4.0µ TIN/LEAD SHELL

05 = 0.30µ GOLD CLIP, 0.28µ GOLD SHELL

### ELECTRICAL:

CURRENT RATING AT 25°C = 3.0A MAX

CURRENT RATING AT 85°C = 2.2A MAX

WORKING VOLTAGE = 120V AC/DC

VOLTAGE PROOF = 360V AC/DC

#### CONTACT RESISTANCE:

INITIAL = 20mΩ MAX

AFTER CONDITIONING = 25mΩ MAX

#### INSULATION RESISTANCE:

INITIAL = 1000MΩ MIN

AFTER CONDITIONING = 100MΩ MIN

### ENVIRONMENTAL:

TEMPERATURE RANGE = -55°C TO +125°C

### MECHANICAL:

DURABILITY = 500 OPERATIONS

INSERTION FORCE = 2.8N MAX, 1.0N MIN

WITHDRAWAL FORCE = 1.8N MAX, 0.2N MIN

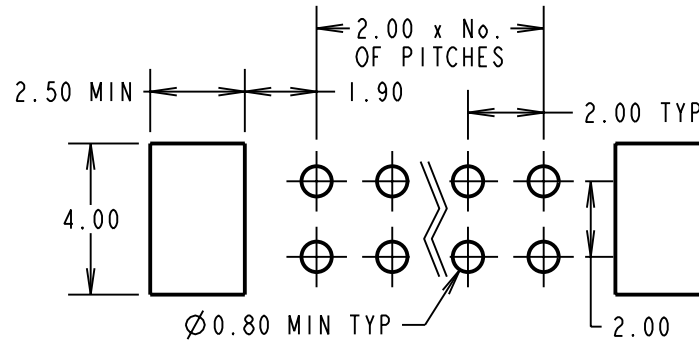
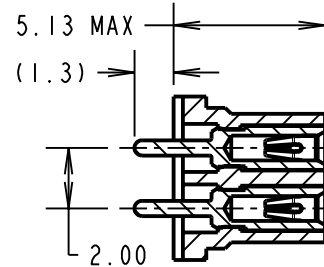
### PACKING:

TUBE

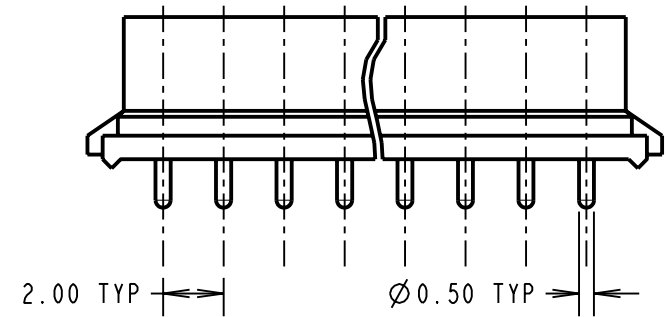
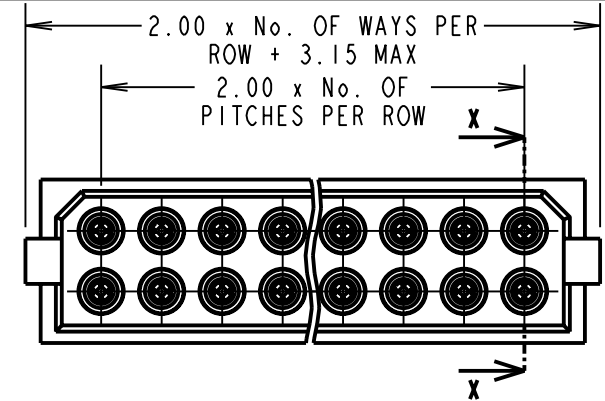
FOR COMPLETE SPECIFICATION, SEE COMPONENT SPECIFICATION C005XX (LATEST ISSUE)

**OBSOLETE**  
All M80 versions  
LTB date 09-03-2018  
C/N 20971

### SECTION X-X



RECOMMENDED PCB LAYOUT



BRITISH STANDARD  
ORDER CODE: TO BS9525 F0033

**B5741-2XX-F-N-X**

TOTAL No. OF WAYS

04 - 20 (EVEN NUMBERS)  
26, 34, 44

#### FINISH

0 - GOLD CLIP, TIN/LEAD SHELL  
2 - GOLD CLIP, GOLD SHELL

**COMMERCIAL ORDER CODE:**  
**M80-891XXXX**

TOTAL No. OF WAYS  
04 - 20 (EVEN NUMBERS)  
26, 34, 44

FINISH  
01 - GOLD CLIP, TIN/LEAD SHELL  
05 - GOLD CLIP, GOLD SHELL

SM	6	12.05.10	10790
NAME	ISS.	DATE	C/NOTE
APPROVED: S. MCCULLAGH			
CHECKED: R. ADDE			
DRAWN: W. J. BOURNE			
CUSTOMER REF.:			
ASSEMBLY DRG:			

**HARWIN**

HARWIN USA  
TEL: 603 893 5376  
FAX: 603 893 5396  
mis@harwin.com

HARWIN Europe (UK)  
TEL: 023 9231 4545  
FAX: 023 9231 4590  
mis@harwin.co.uk

HARWIN Asia  
TEL: +65 6 779 4909  
FAX: +65 6 779 3868  
mis@harwin.com.sg

THIS DRAWING AND ANY INFORMATION OR DESCRIPTIVE MATTER SET OUT HEREON ARE CONFIDENTIAL AND COPYRIGHT PROPERTY OF THE HARWIN GROUP AND MUST NOT BE DISCLOSED, LOANED, COPIED OR USED FOR MANUFACTURING, TENDERING OR FOR ANY OTHER PURPOSE WITHOUT THEIR WRITTEN PERMISSION.

TOLERANCES  
X. = ±1mm  
X.X = ±0.25mm  
X.XX = ±0.10mm  
X.XXX = ±0.01mm  
ANGLES = ±5°  
UNLESS STATED

MATERIAL: SEE ABOVE  
FINISH: SEE ABOVE  
S/AREA: mm<sup>2</sup>

TITLE: DATAMATE 2mm PITCH  
VERTICAL 1.3mm PC TAIL DIL  
SOCKET ASSEMBLY  
DRAWING NUMBER: **M80-891XXXX**  
SHT 2 OF 2