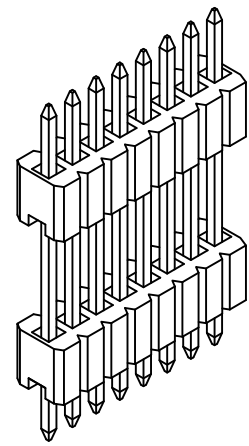
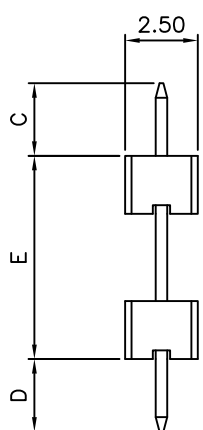
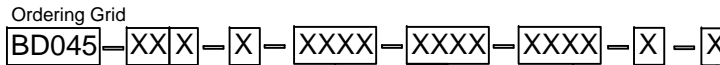


RECOMMENDED PCB LAYOUT



CONTACTS	DIMENSIONS	
	A	B
2	1.27	2.54
3	2.54	3.81
4	3.81	5.08
5	5.08	6.35
6	6.35	7.62
7	7.62	8.89
8	8.89	10.16
9	10.16	11.43
10	11.43	12.70
11	12.70	13.97
12	13.97	15.24
13	15.24	16.51
14	16.51	17.78
15	17.78	19.05
16	19.05	20.32
17	20.32	21.59
18	21.59	22.86
19	22.86	24.13
20	24.13	25.40
21	25.40	26.67
22	26.67	27.94
23	27.94	29.21
24	29.21	30.48
25	30.48	31.75
26	31.75	33.02
27	33.02	34.29
28	34.29	35.56
29	35.56	36.83
30	36.83	38.10
31	38.10	39.37
32	39.37	40.64
33	40.64	41.91



SPECIFICATIONS 规格:

CURRENT RATING 电流额定值: 1 AMP
INSULATOR RESISTANCE 绝缘电阻值: 1000 MEGOHMS MIN.
DIELECTRIC WITHSTANDING 耐电压: AC 300 V
CONTACT RESISTANCE 接触电阻值: 20mΩ Max.
OPERATING TEMPERATURE 工作温度: -40°C TO +105°C
CONTACT MATERIAL 端子物料: COPPER ALLOY
INSULATOR MATERIAL 绝缘体物料:
 OPTIONS 可选物料: POLYESTER 聚酯,
 LCP, UL 94-V0 (INSULATOR HEIGHT/塑胶高度 H = A, B, E)
 OPTIONS 可选物料: POLYAMIDE 聚酰胺,
 NYLON 6T, UL 94-V0 (INSULATOR HEIGHT/塑胶高度 H = K)
SOLDERING PROCESS 可焊性:
 LCP (OPTION 可选物料) -
 IR REFLOW 回流焊: 260°C for 10 sec.
 WAVE 波峰焊: 250°C for 5-10 sec
 MANUAL SOLDER 人工焊接: 350°C for 3-5 sec
 NYLON 6T (OPTION 可选物料) -
 IR REFLOW 回流焊: 260°C for 10 sec.
 WAVE 波峰焊: 230°C for 5-10 sec.
 MANUAL SOLDER 人工焊接: 350°C for 3-5sec

MATES WITH 配套之母座 (SUBJECT TO PIN LENGTH 在端子长度适合的条件下):
 BD074 BD075 BD080 BD090

By	LYH	PN	CB	AE	AE
DETAIL	DRAWING RELEASE	STANDARD INSULATOR MATERIAL CHANGED	NO. OF CONTACTS AMENDED & PACKING OPTIONS CHANGED	SOLDER TEMP & MATES WITH INFO. UPDATED	SOLDER TEMP & MATES WITH INFO. UPDATED
REV DATE	A 28/12/07	B 27/04/09	C 20/05/09	D 27/07/09	E 27/07/09

No. of Contacts 02 to 33
Contact Plating
 A = Gold Flash All Over
 B = Selective Gold Flash Contact Area/
 Tin On Tail
 C = Tin All Over
 G = 10µ" Gold Contact Area/Tin On Tail
 I = 30µ" Gold Contact Area/Tin On Tail
Standard = Gold Flash All Over

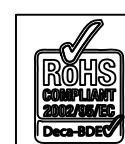
Dimension D (1/100mm) (Tail Length)
Standard - 3.00mm = 0300
 or specify Dimension D
 e.g. 2.50mm = 0250
 Tol +/- 0.2mm

Dimension C (1/100mm) (Post Height)
Standard - 3.00mm = 0300
 or specify Dimension C
 e.g. 2.50mm = 0250
 Tol +/- 0.2mm
Dimension E (1/100mm) (Stack Height)
Standard - 3.00mm = 0300
 or specify Dimension E
 e.g. 2.5mm = 0250
 Tol +/- 0.2mm

REQUEST SAMPLES AND QUOTATION
Packing Options
 G = Plastic box (Standard)
 D = Tube
 E = Tube with Cap

Insulator Material
 L = LCP (Insulator H = A, B, E)
 N = Nylon 6T (Insulator H = K)
Dimension E (1/100mm) (Stack Height)
 Minimum = 2 x 'H'
 Please Specify Dimension E
 (See table opposite for standards)
 e.g. 2.5mm = 0250
 Tol +/- 0.2mm

DIMENSION STANDARDS	
INSULATOR HEIGHT 'H'	DIMENSION E
1.00mm	6.00mm
1.50mm	5.00mm
2.00mm	4.00mm
2.54mm	5.10mm



Tolerances (Except as noted)	Part Number:-	Date:-
Dimensions in mm	BD045	28 DEC 07
X ± 0.30 X° ± 5°	Description:-	
X.X ± 0.20 .X° ± 2°	1.27mm PITCH ELEVATED PIN HEADER, SINGLE ROW THROUGH HOLE, VERTICAL	
X.XX ± 0.15 .XX° ± 1°	© THIS DRAWING IS CONFIDENTIAL AND MUST NOT BE COPIED OR DISCLOSED WITHOUT WRITTEN CONSENT	
X.XXX ± 0.10 .XXX° ± 0.5°	Scale NTS	
	Revision E	

GCT

www.globalconnectortech.com

Material See Note	Drawn by LYH	Sheet No. 1/1
-------------------	--------------	---------------