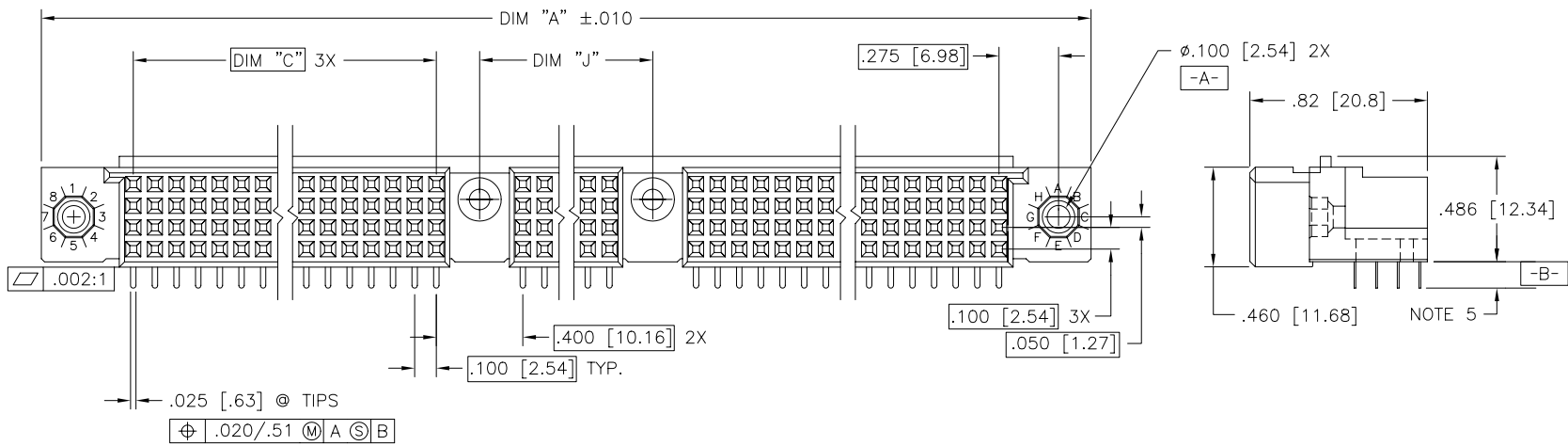
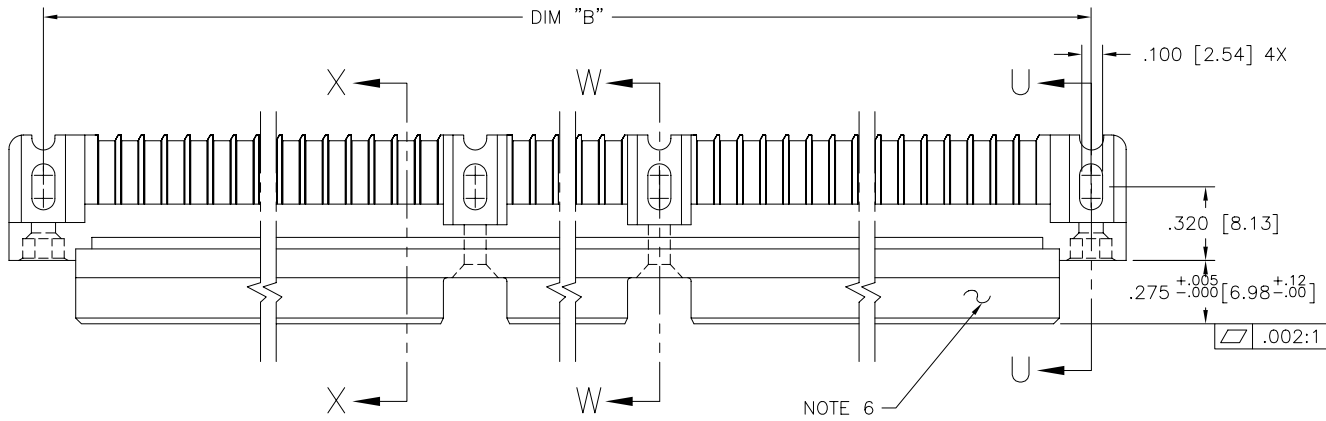


PRODUCT NUMBER
SEE NOTE 1



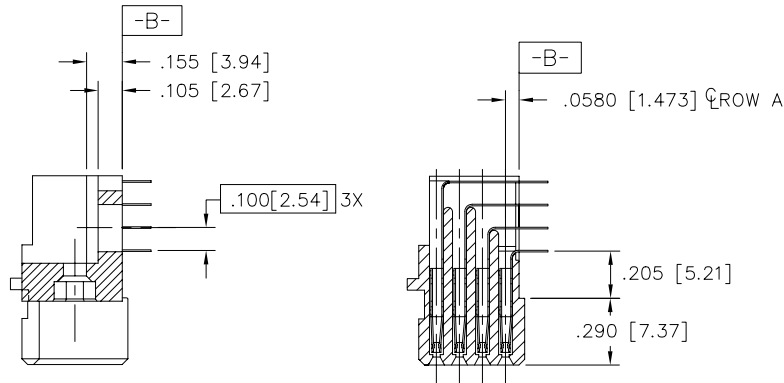
mat'l. code NOTE 3		surface ISO 1302 ✓		tolerance ISO 406 ISO 1101		projection INCH/MM		product family HPC	
tolerances unless otherwise specified		angles		linear		scale 1:1		title 4 ROW R/A RECEPTACLE SOLDER TAIL, 2 GUIDE PINS	
B	v12527	SAR	10/08/91					dwg no 50005	
C	v22041	MRC	4/21/92					sheet 1 of 2 size A3	
D	v31937	GIP	11/10/93	σ±2'				type Product Customer Drawing	
E	v41511	GAH	10/13/94	dr	D. SHEAFFER	1/07/91			
F	v82251	HTB	12/28/98	engr	S. CLARK	1/07/91			
G	v00253	JWS	1/12/00	chr	S. CLARK	1/07/91			
H	M06-0261	AEA	7/08/06	appd	S. CLARK	1/07/91			
sheet index	revision	H	H						
	sheet	1	2						



Copyright FCI

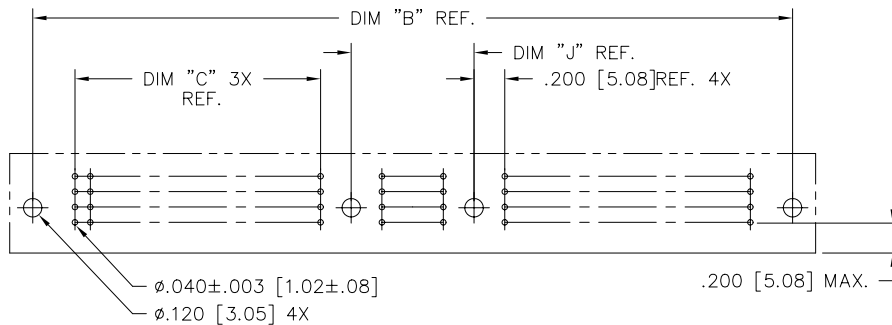
form: A3

PRODUCT NUMBER	DIM.	LENGTH FORMULAS
SEE NOTE 1	DIM A	$.100/2.54 \times \text{NO. OF COLUMNS} + 1.35/34.3$
	DIM B	$.100/2.54 \times \text{NO. OF COLUMNS} + 1.050/26.67$
	DIM C	$.100/2.54 \times \text{NO. OF COLUMNS DIVIDED BY 3} - .100/2.54$
	DIM J	$.100/2.54 \times \text{NO. OF COLUMNS DIVIDED BY 3} + .300/7.62$

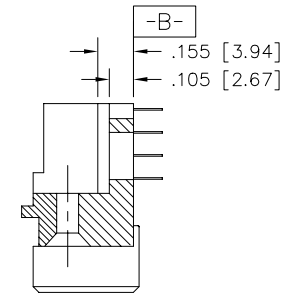


SECTION U-U

SECTION X-X



RECOMMENDED PCB LAYOUT
(ALL HOLES LOCATED ON .100 [2.54] GRID UNLESS OTHERWISE SPECIFIED)



SECTION W-W

NOTES:

1. PRODUCT NUMBERING CODE:
 50005 - X YYY Z
 X = TAIL LENGTH (NOTE 5)
 YYY = NO. OF POSITIONS (NOTE 2)
 Z = PLATING (NOTE 4)
 50005 = BASE NUMBER

- PRODUCT NUMBERING CODE FOR SELECT LOAD PART NUMBERS:
 50005 - XYYYY
 X = SEQUENCE NUMBER
 YYYYY = ALWAYS 'XX'
 50005 = BASE NUMBER

2. THIS PRODUCT IS CONFIGURED IN SIZES OF 30 THRU 150 COLUMNS IN INCREMENTS OF THREE. i.e.: 30,33,36,39.....147,150.
3. HOUSING MATERIAL: GLASS AND MINERAL FILLED THERMOPLASTIC. CONTACT MATERIAL: BeCu
4. PLATING CONTACT AREA OPTIONS:
 1 = 30u"/.76u GOLD
 3 = 50u"/1.27u GOLD
 5 = 30u"/.76u GXT
 ALL SOLDER TAILS TIN/LEAD
5. TAIL LENGTH OPTIONS:
 E = .125±.010 / 3.18±.25
 F = .145±.010 / 3.68±.25
 H = .180±.010 / 4.57±.25
6. COMPANY NAME, PART NUMBER AND LOT CODE TO APPEAR ON THIS SURFACE PER BUS-12-108.
7. FOR DOCUMENTATION MENU, SEE SPECIFICATION BUS-01-057.

mat'l. code		surface		tolerance		projection		product family	
-		ISO 1302 ✓		ISO 406 ISO 1101				HPC	
ltr		ecn		no		dr		date	
H									
				tolerances unless otherwise specified				title	
				angles		linear		INCH/MM	
								4 ROW R/A RECEPTACLE	
				σ±2'				SOLDER TAIL, 2 GUIDE PINS	
								scale 1:1	
				dr		D. SHEAFFER		1/07/91	
				enfr		S. CLARK		1/07/91	
				chr		S. CLARK		1/07/91	
				appd		S. CLARK		1/07/91	
sheet		revision		H					
index		sheet							
								title 4 ROW R/A RECEPTACLE SOLDER TAIL, 2 GUIDE PINS dwg no 50005 sheet 2 of 2 size A3 type Product Customer Drawing	