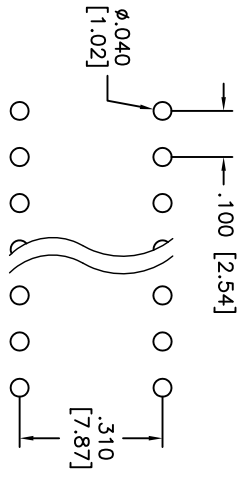
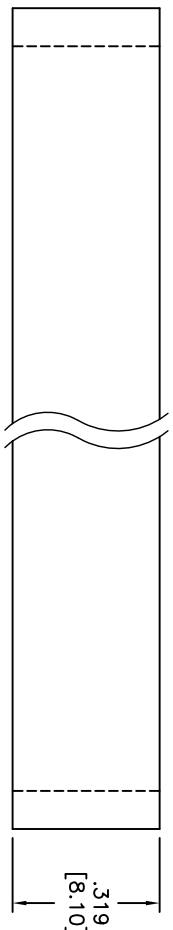
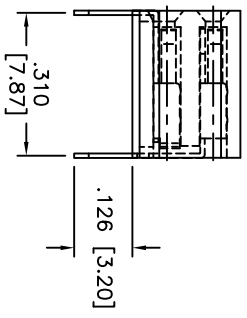
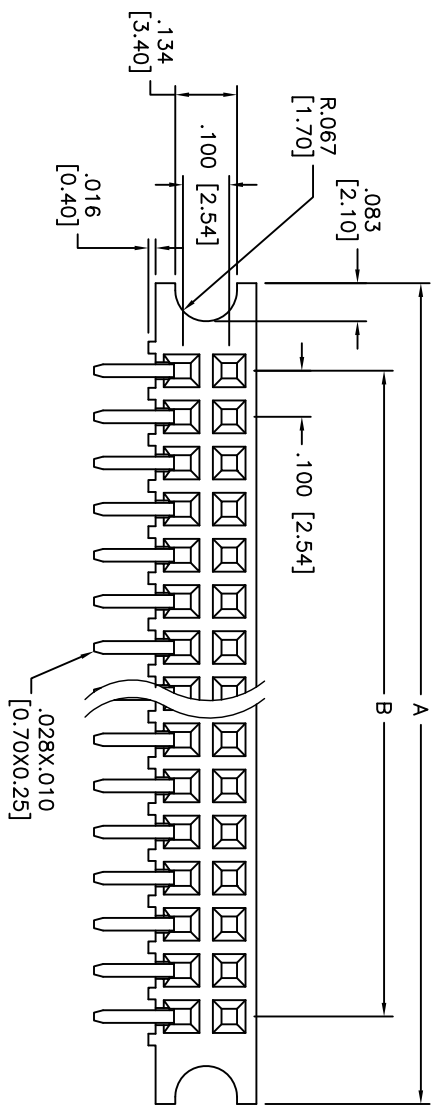


Rev	AWO #	Description	Date	Appr
-		RELEASED	3/11/10	

APPROVED: _____
 DATE: _____ TITLE: _____



RECOMMENDED PCB LAYOUT



SPECIFICATIONS:

- Material: PBT, glass reinforced, rated UL 94V-0
- Insulator color: Black
- Contacts: Phosphor Bronze
- Plating: Gold flash over Nickel underplate overall.
- Electrical:
 - Current rating: 3 Amps max
 - Contact Resistance: 20m Ohms Max.
 - Insulation resistance: 1000 Mohms min @ 500 VDC
 - Dielectric withstanding voltage: 600 VAC for 1 minute
- Temperature Rating:
 - Operating temperature: -40°C to +105°C
- Environmental:
 - Lead free, RoHS compliant.
 - Recommended soldering temp: 235°C for 5 sec.

Positions: 1 thru 20 per row
 A = .100 [2.54] x No. of Positions+ .280 [7.10]
 B = .100 [2.54] x No. of Spaces

UNLESS OTHERWISE SPECIFIED
 ALL DIMENSIONS ARE INCHES [MM]
 TOLERANCES: EXCEPT AS NOTED
 INCHES HOLEES

.X	± .10	ØXX	± .10
.XX	± .020	ØXXX	± .015
.XXX	± .015	ØXXXX	± .010

ADAM TECH

909 Railway Avenue, Union, NJ 07083
 Phone: 908-687-5000 Fax: 908-687-5710

TITLE: RECEPTACLE STRIP, .100 DUAL ROW
 SIDE ENTRY, GOLD PLATED

DRAWN	DY	3/11/10	SIZE	PART NO.	REV.
CHECKED			X	RS2BR-XX-G-E	-
APPROVED			REF:	S00032T	SHEET 1 OF 1