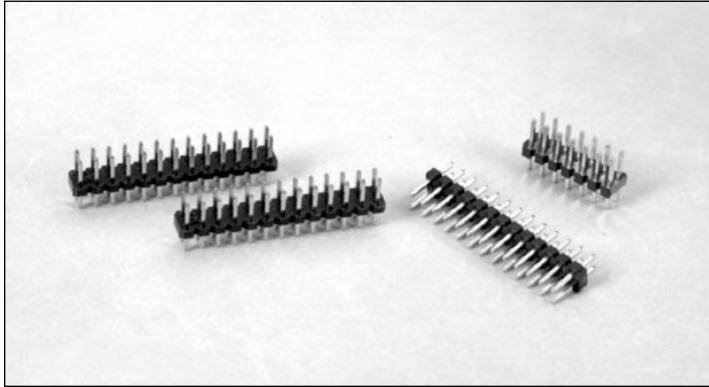


.079" (2mm) Dual Row Through Hole Vertical Headers



8100 SERIES "POST/BOXE"

PART NUMBER LEGEND

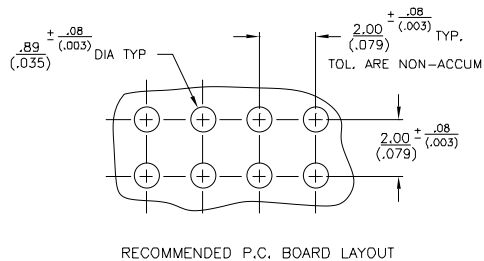
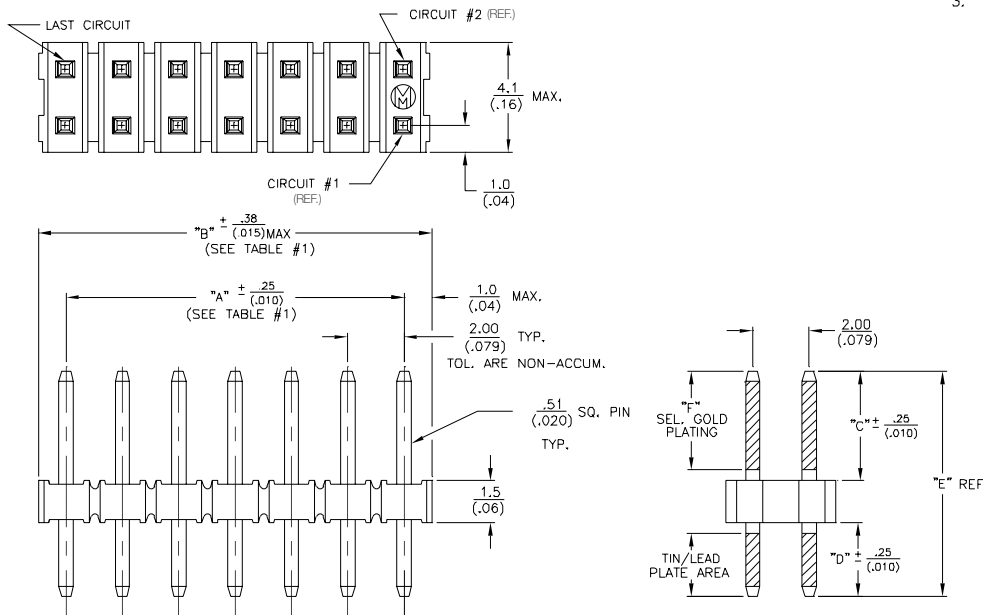
810X-1-2XX-XX

PIN LENGTH	DIM C	DIM D	DIM E
	1 = 4.00 (1.57)	2.60 (.102)	8.10 (.319)
	7 = .050 (1.27)	2.45 (.096)	6.40 (.252)
NUMBER OF POSITIONS PER ROW	2 - 25		
CONTACT FINISH	0 = TIN/LEAD		
	8 = .000030 SELECTIVE GOLD		
	F = .000015 SELECTIVE GOLD		

MATING CONNECTORS: 8000 SERIES

NOTES:

- INSULATOR MATERIAL: NYLON, GLASS FILLED, UL 94V-0.
COLOR: BLACK
PIN MATERIAL: PHOSPHOR BRONZE.
- PIN FINISH:
- TIN PLATING
- SEL. GOLD OVER NICKEL IN MATING AREA WITH TIN PLATING ON SOLDER TAIL
- ALL DIMENSIONS ARE IN MM/(IN).



PART NUMBER	NO. OF CIRCUITS	DIM. "A"	DIM. "B"
810X-11-202-XX	4	2.00 (.079)	4.00 (1.57)
↑ -203- ↑	6	4.00 (.157)	6.00 (.236)
-204-	8	6.00 (.236)	8.00 (.318)
-205-	10	8.00 (.315)	10.00 (.394)
-206-	12	10.00 (.394)	12.00 (.472)
-207-	14	12.00 (.472)	14.00 (.551)
-208-	16	14.00 (.551)	16.00 (.630)
-209-	18	16.00 (.630)	18.00 (.709)
-210-	20	18.00 (.709)	20.00 (.787)
-211-	22	20.00 (.787)	22.00 (.866)
-212-	24	22.00 (.866)	24.00 (.945)
-213-	26	24.00 (.945)	26.00 (1.024)
-214-	28	26.00 (1.024)	28.00 (1.102)
-215-	30	28.00 (1.102)	30.00 (1.181)
-216-	32	30.00 (1.181)	32.00 (1.260)
-217-	34	32.00 (1.260)	34.00 (1.339)
-218-	36	34.00 (1.339)	36.00 (1.417)
-219-	38	36.00 (1.417)	38.00 (1.496)
-220-	40	38.00 (1.496)	40.00 (1.575)
-221-	42	40.00 (1.575)	42.00 (1.654)
-222-	44	42.00 (1.654)	44.00 (1.732)
-223-	46	44.00 (1.732)	46.00 (1.811)
↑ -224- ↓	48	46.00 (1.811)	48.00 (1.890)
810X-11-225-XX	50	48.00 (1.890)	50.00 (1.968)

PART NUMBER	DIM. "C"	DIM. "D"	DIM. "E"	DIM. "F"
810X-11-2XX-01	4.00 (.157)	2.60 (.102)	8.10 (.319)	3.05 (.120)
810X-11-2XX-02	2.45 (.096)	2.45 (.096)	6.40 (.252)	2.03 (.080)

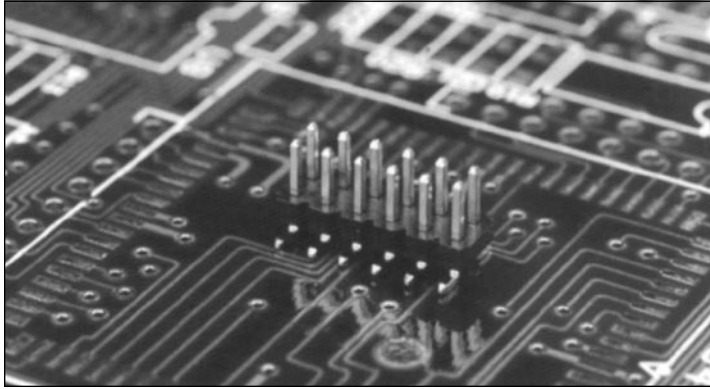


North and South America:
Methode Electronics, Inc. Connector Products
 1700 Hicks Road • Rolling Meadows, IL 60008 USA
 847-392-3500 • Toll Free: 800-323-6864 • Fax: 847-392-9404
 Email: info@methode.com • Web: www.methode.com/connector/index.html

Europe:
Methode Electronics Ireland, Ltd.
 Unit H, Crossagalla Business Park, Ballysimon Rd. • Limerick, Ireland
 +353 (0) 61 401222 • Fax: +353 (0) 61 401942
 Email: info@methode.ie • Web: ireland.methode.com/main.html

Far East:
Methode Electronics Far East, Pte. Ltd.
 1 Tuas Lane, Jurong Town • Singapore 638610
 65-68615444 • Fax: 65-68614777
 Email: sales@methode.com.sg • Web: www.methode.com/mefe/index.html

.079" (2mm) Dual Row Surface Mount, Vertical Headers



8100 SERIES "POST/BOXE"

PART NUMBER LEGEND

810X-21-2XX-XX

PIN LENGTH (SEE TABLE II)

NUMBER OF POSITIONS PER ROW (SEE TABLE I)

PLATING OPTION
(SEE NOTE #2)

MATING CONNECTORS: 8000 SERIES

NOTES

1) INSULATOR MATERIAL: 46 NYLON 30% GLASS REINFORCED, UL 94V-0
COLOR: BLACK

CONTACT MATERIAL: PHOSPHOR BRONZE

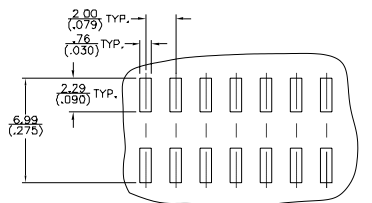
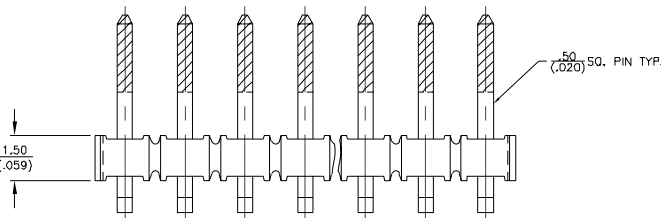
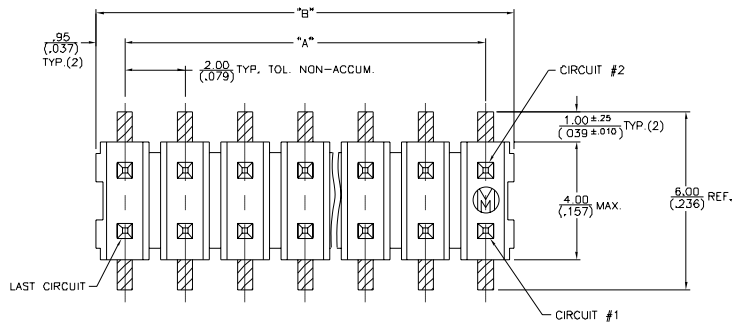
2) CONTACT FINISH:

8100-21-2XX-XX .000150/.000250 90/10 TIN/LEAD OVER .000050/.000150 NICKEL PLATE.

810B-21-2XX-XX .000030 SEL GOLD PLATE OVER .000050/.000150 NICKEL PLATE ALL OVER;.0001-.0002 SEL. 90/10 TIN/LEAD PLATE.

810E-21-2XX-XX .000015 SEL GOLD PLATE OVER .000050/.000150 NICKEL PLATE ALL OVER;.0001-.0002 SEL. 90/10 TIN/LEAD PLATE.

3) ALL DIMENSIONS ARE IN $\frac{MM}{(IN.)}$



RECOMMENDED P.C. BOARD LAYOUT
SCALE 4/1

TABLE I

PART NUMBER	NO OF CIRCUITS	DIM. "A"	DIM. "B"
810X-21-202-XX	4	2.00 (.079)	3.90 (.154)
↑	↑	↑	↑
↑ -203	6	4.00 (.157)	5.90 (.232)
↑ -204	8	6.00 (.236)	7.90 (.311)
↑ -205	10	8.00 (.315)	9.90 (.390)
↑ -206	12	10.00 (.394)	11.90 (.469)
↑ -207	14	12.00 (.472)	13.90 (.547)
↑ -208	16	14.00 (.551)	15.90 (.626)
↑ -209	18	16.00 (.630)	17.90 (.705)
↑ -210	20	18.00 (.709)	19.90 (.783)
↑ -211	22	20.00 (.787)	21.90 (.862)
↑ -212	24	22.00 (.866)	23.90 (.941)
↑ -213	26	24.00 (.945)	25.90 (1.020)
↑ -214	28	26.00 (1.024)	27.90 (1.099)
↑ -215	30	28.00 (1.102)	29.90 (1.177)
↑ -216	32	30.00 (1.181)	31.90 (1.256)
↑ -217	34	32.00 (1.260)	33.90 (1.335)
↑ -218	36	34.00 (1.339)	35.90 (1.413)
↑ -219	38	36.00 (1.417)	37.90 (1.492)
↑ -220	40	38.00 (1.496)	39.90 (1.571)
↑ -221	42	40.00 (1.575)	41.90 (1.650)
↑ -222	44	42.00 (1.654)	43.90 (1.729)
↑ -223	46	44.00 (1.732)	45.90 (1.807)
↑ -224	48	46.00 (1.811)	47.90 (1.886)
810X-21-225-XX	50	48.00 (1.890)	49.90 (1.965)

TABLE II

PART NUMBER	DIM "C"	DIM "D"
810X-21-2XX-01	3.96 (.156)	6.55 (.258)



North and South America:

Methode Electronics, Inc. Connector Products

1700 Hicks Road • Rolling Meadows, IL 60008 USA

847-392-3500 • Toll Free: 800-323-6864 • Fax: 847-392-9404

Email: info@methode.com • Web: www.methode.com/connector/index.html

Europe:

Methode Electronics Ireland, Ltd.

Unit H, Crossagalla Business Park, Ballysimon Rd. • Limerick, Ireland

+353 (0) 61 401222 • Fax: +353 (0) 61 401942

Email: info@methode.ie • Web: ireland.methode.com/main.html

Far East:

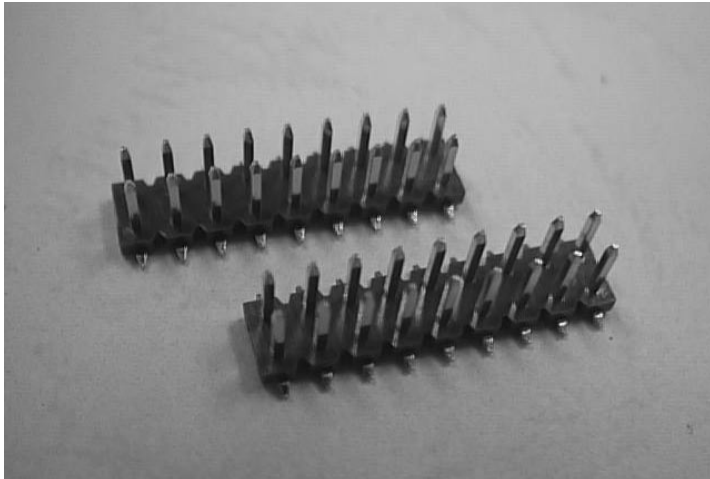
Methode Electronics Far East, Pte. Ltd.

1 Tuas Lane, Jurong Town • Singapore 638610

65-68615444 • Fax: 65-68614777

Email: sales@methode.com.sg • Web: www.methode.com/mefe/index.html

.079" (2mm) Dual Row Surface Mount, Vertical Headers



8100 SERIES "SMT Header"

PART NUMBER LEGEND

817X-81-2XX-XX

MATING LENGTH

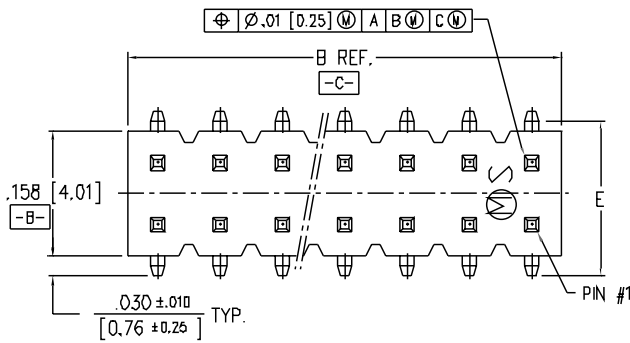
NUMBER OF POSITIONS PER ROW
(e.g. 9 positions = 18 pins)

PLATING OPTION

M = .000015" gold plate

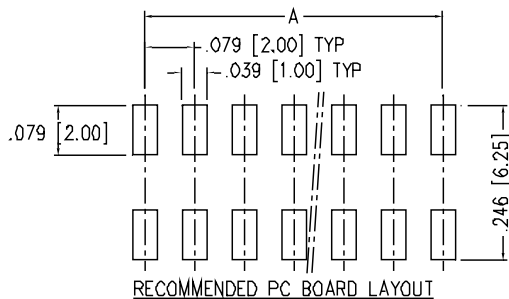
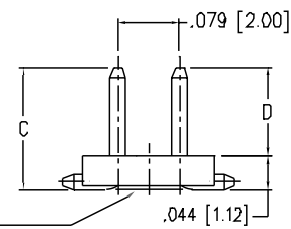
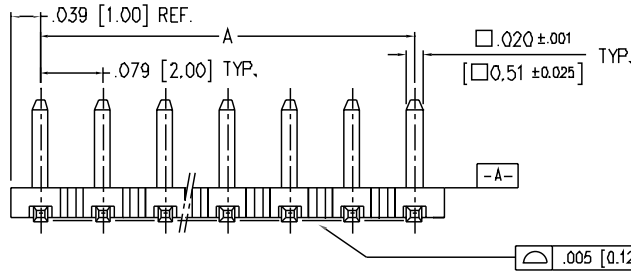
NOTES

- INSULATOR : POLYPHENYLENE SULFIDE, (PPS) NATURAL, UL94V-0
PINS : PHOSPHOR BRONZE
- PIN FINISH :
M : 0.000015" min. Gold plate over 0.000050" min. Nickel plate.



PART NUMBER	NUMBER OF CIRCUITS	DIM A	DIM B REF.
81XX-81-210-XX	20	.709/18.00	.787/20.00
81XX-81-209-XX	18	.630/16.00	.708/18.00
81XX-81-208-XX	16	.551/14.00	.630/16.00
81XX-81-207-XX	14	.472/12.00	.551/14.00
81XX-81-206-XX	12	.394/10.00	.472/12.00
81XX-81-205-XX	10	.315/8.00	.394/10.00
81XX-81-204-XX	8	.236/6.00	.315/8.00
81XX-81-203-XX	6	.157/4.00	.236/6.00
PART NUMBER	NUMBER OF CIRCUITS	DIM A	DIM B REF.

TABLE I



PART NUMBER	DIM C	DIM D	DIM E
81XX-81-2XX-08	.152±.004/3.86±0.10	.108±.008/2.74±0.20	.210±.010/5.33±0.25
81XX-81-2XX-06	.189±.005/4.80±0.13	.144±.005/3.68±0.13	.216±.016/5.50±0.40
81XX-81-2XX-04	.180±.010/4.57±0.25	.135±.008/3.43±0.20	-
81XX-81-2XX-02	.120/3.05 MAX.	.075±.008/1.90±0.20	-
81XX-81-2XX-01	.120/3.05 MAX.	.070±.008/1.78±0.20	-
PART NUMBER	DIM C	DIM D	DIM E

TABLE II



North and South America:
Methode Electronics, Inc. Connector Products
 1700 Hicks Road • Rolling Meadows, IL 60008 USA
 847-392-3500 • Toll Free: 800-323-6864 • Fax: 847-392-9404
 Email: info@methode.com • Web: www.methode.com/connector/index.html

Europe:
Methode Electronics Ireland, Ltd.
 Unit H, Crossagalla Business Park, Ballysimon Rd. • Limerick, Ireland
 +353 (0) 61 401222 • Fax: +353 (0) 61 401942
 Email: info@methode.ie • Web: ireland.methode.com/main.html

Far East:
Methode Electronics Far East, Pte. Ltd.
 1 Tuas Lane, Jurong Town • Singapore 638610
 65-68615444 • Fax: 65-68614777
 Email: sales@methode.com.sg • Web: www.methode.com/mefe/index.html