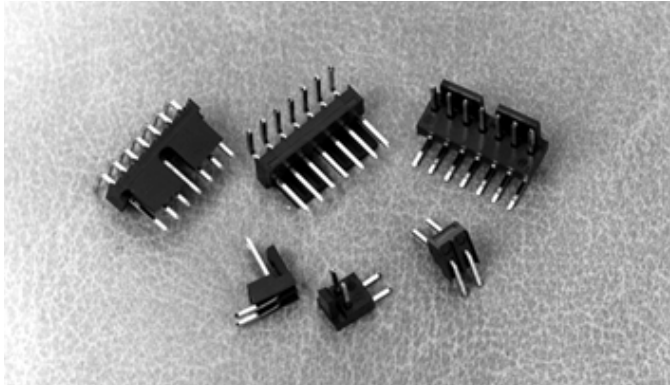


# .100" (2.54mm) Single Row, Through Hole, Right Angle, Top Polarizing, Locking Headers (Short Back)



## 1100 SERIES "TERMACON"

### PART NUMBER LEGEND

**11XX-21-1XX-XX**

- 11XX** - PIN LENGTH (SEE TABLE 2)
- 21** - NUMBER OF POSITIONS PER ROW (SEE TABLE 1)
- 1XX** - PIN PLATING (SEE NOTE 2)
- XX** - INSULATOR MATERIAL (SEE NOTE 1)

**MATING CONNECTORS: 1300 SERIES CRIMP OR IDC STYLE CONNECTORS**

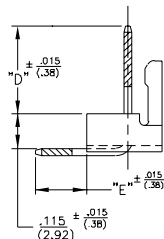
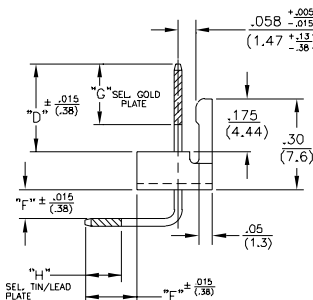
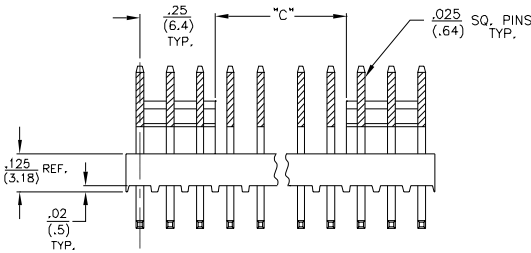
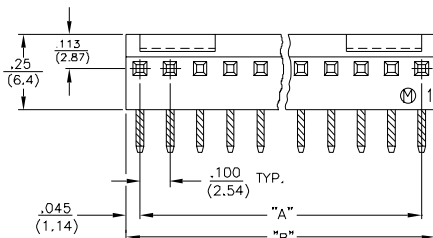
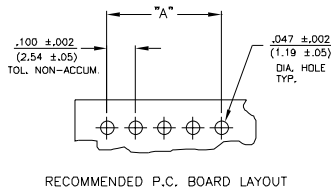


FIGURE 2  
OTHERWISE SAME AS FIGURE 1



RECOMMENDED P.C. BOARD LAYOUT

### NOTES :

- MATERIALS: INSULATOR : 110X - NYLON 6/6, UL94V-0, COLOR: NATURAL(RED) AVAILABLE ON 2 POS. THRU 8 POS. ONLY.  
111X - POLYESTER (PCT) 30% GLASS-FILLED, UL94V-0, COLOR : NATURAL  
PIN : PHOSPHOR BRONZE
- PIN PLATING:  
11X0 - TIN/LEAD OVER NICKEL PLATE.  
11X2 - .000015 GOLD OVER .000030 NICKEL PLATE.  
11XB - .000050 NICKEL PLATE ALL OVER;  
.000015 SEL. GOLD PLATE AS INDICATED;  
.0001-.0002 SEL. TIN/LEAD AS INDICATED.  
11XF - .000050 NICKEL PLATE ALL OVER;  
.000030 SEL. GOLD PLATE AS INDICATED;  
.0001-.0002 SEL. TIN/LEAD AS INDICATED.
- ALL DIMENSIONS ARE IN IN./ (MM.).
- FOR CIRCUITS 2 THRU 6 LOCKING RAMP WILL BE SOLID.

TABLE 1					
PART NUMBER	Ns. OF POS.	"A" ±.010 (±.25)	"B" ±.010 (±.25)	"C" ±.010 (±.25)	
11XX-21-102-XX	2	.100 (2.54)	.180 (4.53)		SEE NOTE 5.
↑ ↑ -103- ↑	3	.200 (5.08)	.280 (7.12)		
-104-	4	.300 (7.62)	.390 (9.91)		
-105-	5	.400 (10.16)	.490 (12.45)		
-106-	6	.500 (12.70)	.590 (14.99)		SEE NOTE 5.
-107-	7	.600 (15.24)	.690 (17.53)	.100 (2.54)	
-108-	8	.700 (17.78)	.790 (20.07)	.200 (5.08)	
-109-	9	.800 (20.32)	.890 (22.61)	.300 (7.62)	
-110-	10	.900 (22.86)	.990 (25.15)	.400 (10.16)	
-111-	11	1.000 (25.40)	1.090 (27.69)	.500 (12.70)	
-112-	12	1.100 (27.94)	1.190 (30.23)	.600 (15.24)	
-113-	13	1.200 (30.48)	1.290 (32.77)	.700 (17.78)	
-114-	14	1.300 (33.02)	1.390 (35.31)	.800 (20.32)	
-115-	15	1.400 (35.56)	1.490 (37.85)	.900 (22.86)	
-116-	16	1.500 (38.10)	1.590 (40.39)	1.000 (25.40)	
-117-	17	1.600 (40.64)	1.690 (42.93)	1.100 (27.94)	
-118-	18	1.700 (43.18)	1.790 (45.47)	1.200 (30.48)	
-119-	19	1.800 (45.72)	1.890 (48.01)	1.300 (33.02)	
-120-	20	1.900 (48.26)	1.990 (50.55)	1.400 (35.56)	
-121-	21	2.000 (50.80)	2.090 (53.09)	1.500 (38.10)	
-122-	22	2.100 (53.34)	2.190 (55.63)	1.600 (40.64)	
-123-	23	2.200 (55.88)	2.290 (58.17)	1.700 (43.18)	
-124-	24	2.300 (58.42)	2.390 (60.71)	1.800 (45.72)	
-125-	25	2.400 (60.96)	2.490 (63.26)	1.900 (48.26)	
-126-	26	2.500 (63.50)	2.590 (65.79)	2.000 (50.80)	
↑ ↑ -127- ↑	27	2.600 (66.04)	2.690 (68.33)	2.100 (53.34)	
11XX-21-128-XX	28	2.700 (68.58)	2.790 (70.87)	2.200 (55.88)	

TABLE 2						
PART NUMBER	DIM.D	DIM.E	DIM.F	DIM.G	DIM.H	SEE FIGURE #
11XX-21-1XX-01	.29 (7.4)	.14 (3.6)	—	.20 (5.1)	.12 (3.0)	FIGURE 2
11XX-21-1XX-02	.28 (6.8)	.14 (3.6)	.08 (2.0)	.20 (5.1)	.12 (3.0)	FIGURE 1
11XX-21-1XX-03	.29 (7.4)	.105 (2.67)	—	.20 (5.1)	.12 (3.0)	FIGURE 2
11XX-21-1XX-04	.30 (7.6)	.142 (3.61)	.095 (2.41)	—	—	FIGURE 1
11XX-21-1XX-05	.26 (6.6)	.126 (3.20)	.095 (2.41)	.20 (5.1)	.12 (3.0)	FIGURE 1
11XX-21-1XX-06	.26 (6.6)	.143 (3.63)	—	—	—	FIGURE 2