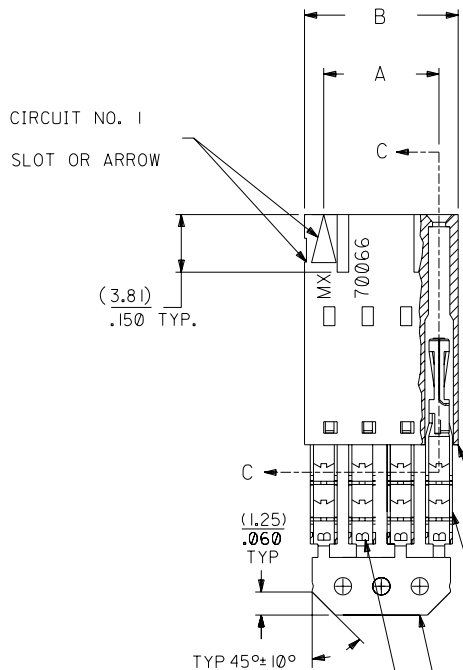
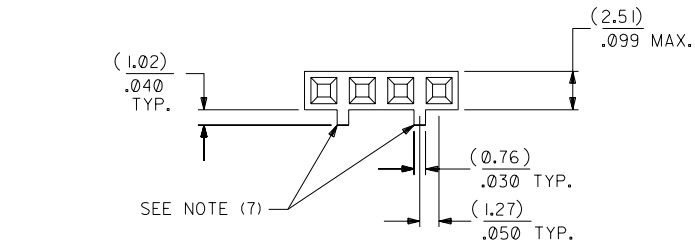


OPTION C

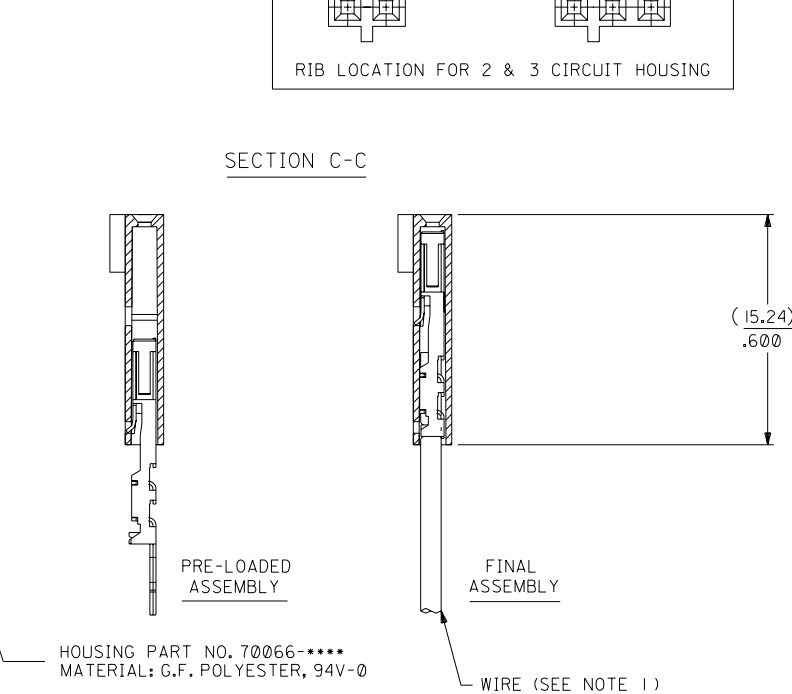
NOTES:

- TO BE USED WITH (26) AWG. STRANDED WIRE WITH (1.35)/.053 DIA. MAX. INSULATION.
- SEE CHART FOR CIRCUIT SIZES.
- STANDARD PACKAGING PER PK-70400-0001. OPTIONAL PACKAGING MAY BE AVAILABLE, REQUEST DWG. PK-70400
- PARTS STACKABLE END TO END ON (2.54)/.100 CENTERS.
- REFER TO PRODUCT SPECIFICATION: PS-70400.
- SEE DWG. SDA-70400-**** (SHT. 5) FOR OPTIONAL HOUSING DETAILS.
- 4 CIRCUIT SHOWN. 4 - 25 CKT.'S. HAVE (2) RIBS.
- TO MATE WITH MOLEX PART NO.'S.: A-70374-****, A-70376-****, A-70390-****, A-70392-****, A-70544-****, A-70554-****, A-70542-****, A-70552-****, A-70546-****, A-70556-****.
- 2 CIRCUIT ASSEMBLIES SUPPLIED AS GROUPED PAIRS.



| I.D. SLOT CODE TO WIRE GAUGE CHART | |
|------------------------------------|------------|
| I.D. SLOT CODE | WIRE GAUGE |
| B | 26 AWG. |

| PLATING CODE (STRIPE ON CARRIER STRIP) | |
|--|-------|
| PLATING | COLOR |
| 30 GOLD | RED |



30 GOLD - .000030 MIN. GOLD IN SELECT AREA WITH .000075 MIN. TIN IN SELECT AREA OVER .000050 MIN. NICKEL OVER-ALL. *THE PRIMARY SHIPPING CARTON WILL BE LABELED "COMPLIANT TO ROHS DIRECTIVE 2002/95/EC AND ELV ANNEX II OF DIRECTIVE 2000/53/EC". CARTONS WITHOUT THIS LABEL MAY CONTAIN PRODUCT WITH LEAD.

| CKT. SIZE | A | B | EDP. NO. | ENG. NO. |
|-----------|--------------------|--------------------|------------|--------------|
| 2 | (2.54) .100 | (5.05) .199 | 14-56-4022 | A-70400-1261 |
| 3 | (5.08) .200 | (7.59) .299 | 14-56-4032 | A-70400-1262 |
| 4 | (7.62) .300 | (10.13) .399 | 14-56-4042 | A-70400-1263 |
| 5 | (10.16) .400 | (12.67) .499 | 14-56-4052 | A-70400-1264 |
| 6 | (12.70) .500 | (15.21) .599 | 14-56-4062 | A-70400-1265 |
| 7 | (15.24) .600 | (17.75) .699 | 14-56-4072 | A-70400-1266 |
| 8 | (17.78) .700 | (20.29) .799 | 14-56-4082 | A-70400-1267 |
| 9 | (20.32) .800 | (22.83) .899 | 14-56-4092 | A-70400-1268 |
| 10 | (22.86) .900 | (25.37) .999 | 14-56-4102 | A-70400-1269 |
| 11 | (25.54) 1.000 | (27.91) 1.099 | 14-56-4112 | A-70400-1270 |
| 12 | (27.94) 1.100 | (30.45) 1.199 | 14-56-4122 | A-70400-1271 |
| 13 | (30.48) 1.200 | (32.99) 1.299 | 14-56-4132 | A-70400-1272 |
| 14 | (33.02) 1.300 | (35.53) 1.399 | 14-56-4142 | A-70400-1273 |
| 15 | (35.56) 1.400 | (38.07) 1.499 | 14-56-4152 | A-70400-1274 |
| 16 | (38.01) 1.500 | (40.61) 1.599 | 14-56-4162 | A-70400-1275 |
| 17 | (40.64) 1.600 | (43.15) 1.699 | 14-56-4172 | A-70400-1276 |
| 18 | (43.18) 1.700 | (45.69) 1.799 | 14-56-4182 | A-70400-1277 |
| 19 | (45.72) 1.800 | (48.23) 1.899 | 14-56-4192 | A-70400-1278 |
| 20 | (48.26) 1.900 | (50.77) 1.999 | 14-56-4202 | A-70400-1279 |
| 21 | (50.80) 2.000 | (53.31) 2.099 | 14-56-4212 | A-70400-1280 |
| 22 | (53.34) 2.100 | (55.85) 2.199 | 14-56-4222 | A-70400-1281 |
| 23 | (55.88) 2.200 | (58.39) 2.299 | 14-56-4232 | A-70400-1282 |
| 24 | (58.42) 2.300 | (60.93) 2.399 | 14-56-4242 | A-70400-1283 |
| 25 | (60.96) 2.400 | (63.47) 2.499 | 14-56-4252 | A-70400-1284 |

| REV. | DATE | BY | REVISIONS |
|------|------|----|---|
| E | | | REVISED PER ECR NO. U82110 10-17-88 BJS |
| F | | | LEAD FREE UCP2004-1769 RWHITE 04/03/17 |
| EI | | | ADD CARRIER CHAMF ECR# U80110 05/20/98 LMCGRATH |
| C | | | REDRAWN ON CAD ECR# 8842 5/8/86 W.Z. |
| LTR. | | | REVISIONS |

| DIMENSIONS SHOWN (METRIC) INCH | |
|---|--------|
| UNLESS OTHERWISE SPECIFIED TOLERANCES: ANGULAR ± 1/2° | |
| INCH | METRIC |
| 3 PLACE ± .010 | --- |
| 2 PLACE ± .014 | ± 0.25 |
| 1 PLACE --- | ± 0.35 |

| | | |
|---|--|---------------------------|
| ▽ = | ▼ = | REVISE ONLY ON CAD SYSTEM |
| TITLE ASSEMBLY, SL CONNECTOR (SINGLE ROW- (2.54)/.100 GRID) | | |
| MOLEX INCORPORATED LITSE, ILL. 60532 U.S.A. | | SHEET NO. DATE 10/10/84 |
| PART NO. SDA-70400-1261-1284 | | DRWG. NO. |
| SEE CHART | | |
| FILE NAME S10400CX8 | THIS DRAWING CONTAINS INFORMATION THAT IS PROPRIETARY TO MOLEX INC. AND SHOULD NOT BE USED WITHOUT WRITTEN PERMISSION. | DIV. DA |