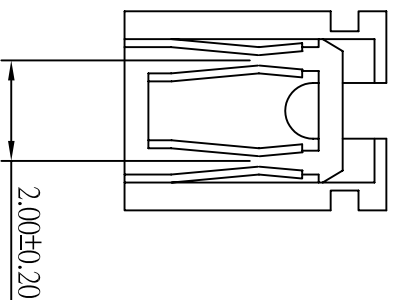
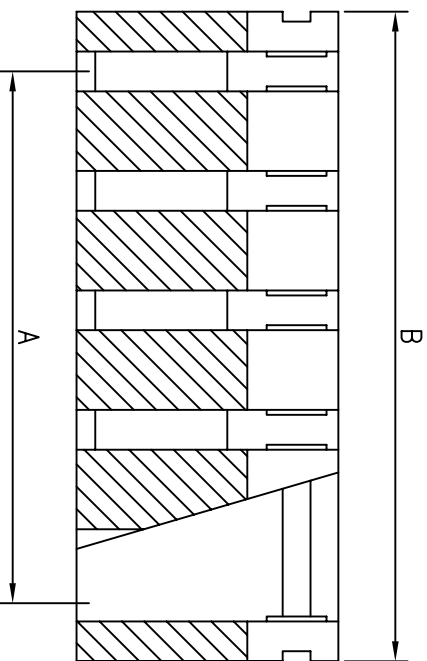
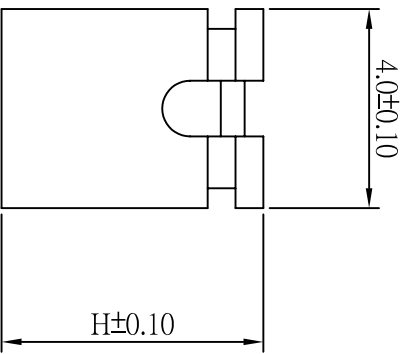


CUSTOMER COPY



ORDER INFORMATION

1251 XX X XX X

Plating:
1: Tin
3: Gold

No. of Positions
(02 ~10)

Color:
0: Black
1: Blue
2: White
3: Red

Style:
01: 11B H:1.2
03: 2B H:3.5
04: 2B H:4.5

SPECIFICATION

- * Current Rating:
3 A
- * Withstanding Voltage:
500 VAC (1 min.)
- * Insulation Resistance:
1000 Megohms MIN.
- * Contact Resistance:
20 Milliohms MAX.
- * Operating Temperature:
-40°C to +85°C
- * Retention Force:
1Kg MIN.

MATERIAL

- * Contact: Brass
- * Insulator: PBT & 30% G. F.
- * Plated: Gold or Tin

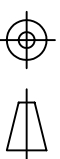
CIRCUIT	DIM "A"	DIM "B"
02	2.0	4.0
03	4.0	6.0
04	6.0	8.0
05	8.0	10.0
06	10.0	12.0
07	12.0	14.0
08	14.0	16.0
09	16.0	18.0
10	18.0	20.0



ACMELUX CO., LTD.

TEL:886-2-85124595 FAX:886-2-85124322

0.0±	SCALE:	TITLE:
0.00±	UNIT:	2.00mm (.079") Patent MINI
0.000±	MM	JUMPER/SHORTING CONNECTOR



MATL: PBT + 30% GF
DWG. NO. C1251XXXXXX

PART NO:
APP BY:
CHK BY:
DR BY: JACK LIN

REV	ECN NO.	APP.	DATE
A	NEW DESIGN		