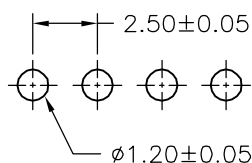
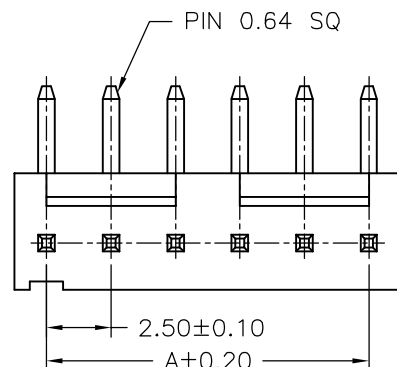
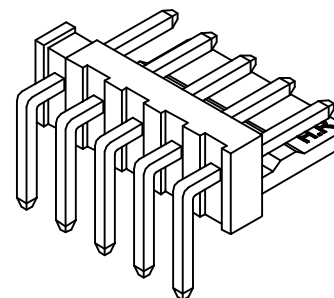
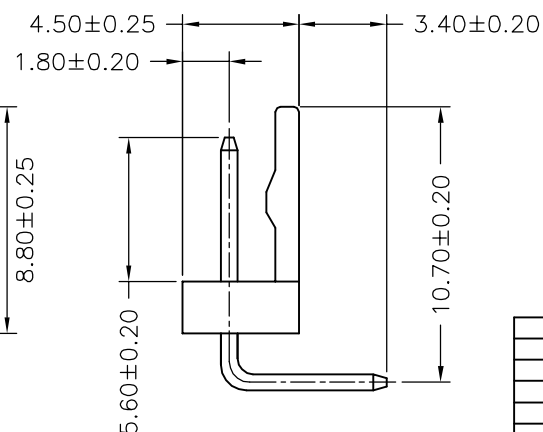
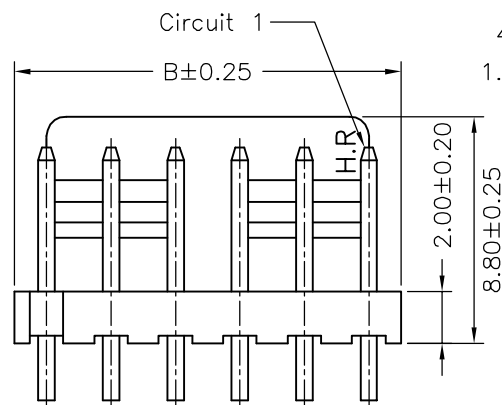


02~05P



P.C.B. LAYOUT



SPECIFICATIONS

Current Rating: 3A AC,DC

Voltage Rating: 250V AC,DC

Temperature Range: -25°C ~ +85°C

Contact Resistance: 10mΩ Max

Insulation Resistance: 1000MΩ Min

Withstanding Voltage: 800V AC/minute



Pin Material: Brass/Tin-plated

Material: Nylon 66,UL94V-2

Pantone Color: 7501C

Ordering Information & Dimensions

PART NO.	Dimensions	
	A	B
A2503WR-02P	2.50	5.00
A2503WR-03P	5.00	7.50
A2503WR-04P	7.50	10.00
A2503WR-05P	10.00	12.50
A2503WR-06P	12.50	15.00
A2503WR-07P	15.00	17.50
A2503WR-08P	17.50	20.00
A2503WR-09P	20.00	22.50
A2503WR-10P	22.50	25.00
A2503WR-11P	25.00	27.50
A2503WR-12P	27.50	30.00
A2503WR-13P	30.00	32.50
A2503WR-14P	32.50	35.00
A2503WR-15P	35.00	37.50
A2503WR-16P	37.50	40.00
A2503WR-17P	40.00	42.50
A2503WR-18P	42.50	45.00
A2503WR-19P	45.00	47.50
A2503WR-20P	47.50	50.00

						JOINT TECH ELECTRONIC IND. CO., LTD.		
						JOY DAY INDUSTRIAL CO., LTD.		
			UNIT	SCALE	SHEET	TITLE: 2.50mm PITCH 90° WAFER		
			mm		1 of 1			
			DRAWN BY		APPROVED BY			
			董正一		董正一			
			2001.02.01		2001.02.01			
			GENERAL TOLERANCE			DRAW NO.: A2503WR-XP		
B1	REVISE	2007.03.18	X. X±0.25		ANGLE±			
B0	NEW RELEASE	2005.12.10	X. XX±0.15					
REV.	DESCRIPTION	DATE	X. XXX±0.05					