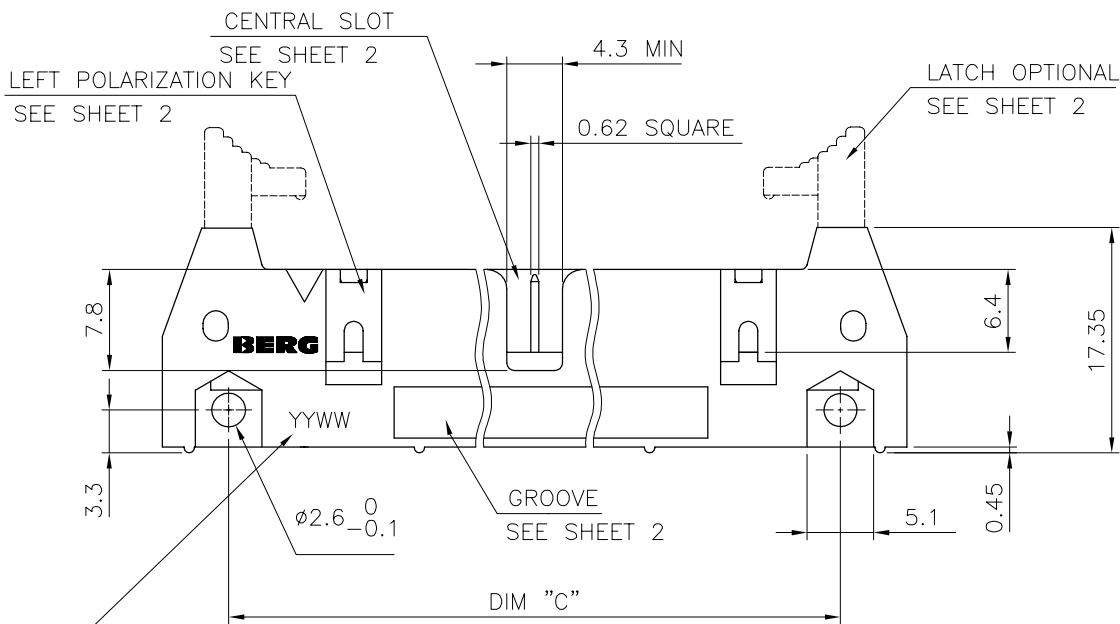
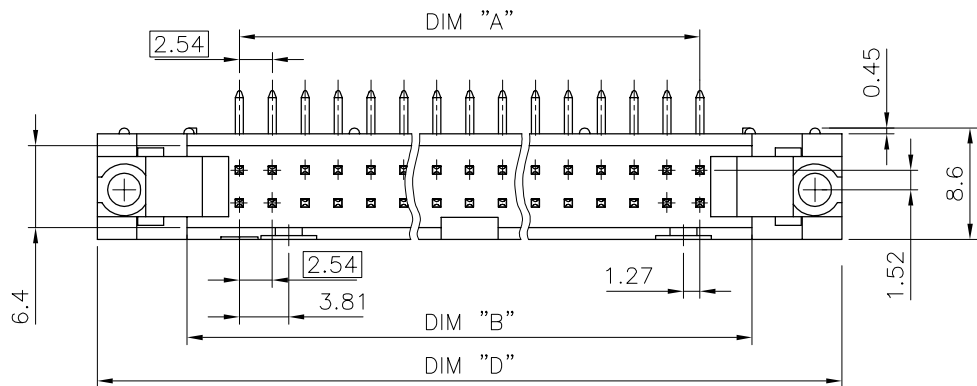


PRODUCT NUMBER	DIM "A"	DIM "B"	DIM "C"	DIM "D"
95256-XY	SEE TABLE SHEET 213 2/2			

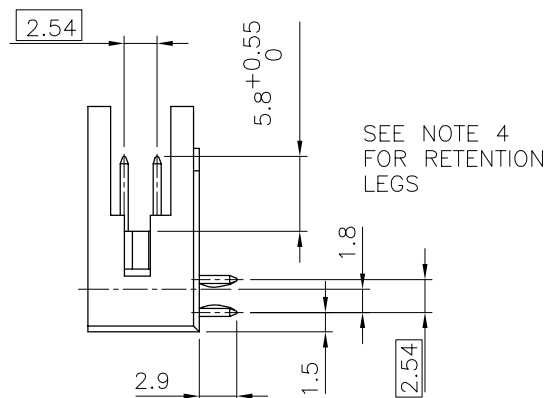


YY= YEAR CODE
WW= WEEK NUMBER

1.27 μ m Au	3.81um SnPb MIN
CONTACT AREA	SOLDER TAIL AREA
PLATING THICKNESS OVER 1.27um Ni MIN	

NOTES:

- 1 - MATERIAL CONTACT: COPPER ALLOY.
- 2 - MATERIAL PLASTIC: POLYESTER 30% GLASSFILLED FLAME RETARDANT PER UL-94-V0, COLOR BLUE.
- 3 - PRODUCTS PACKED IN TUBES.
- 4 - RETENTION LEGS LOCATED IN THE CENTER OF THE CONNECTOR

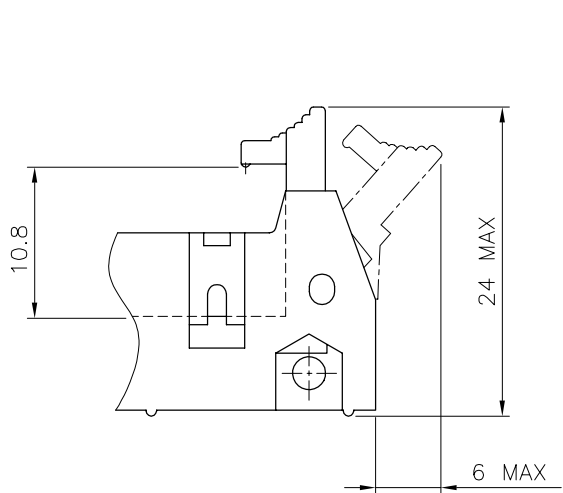


mat'l. code SEE NOTES				tolerances unless otherwise specified		CUSTOMER COPY	ELECTRONICS www.fciconnect.com	
ltr	ecn no	dr	date	linear		projection 	title	
A	F60315	OMA	96.04.23				QKIE HEADER R.A. RETENTION LEGS	
				angles		mm 	product family	code
				dr	O. MATHEVON		96.04.23	QKIE HDR
				engr	JM. PHAMVAN	96.04.23	size	dwg no
				chr	P. NIZZI	96.04.23	scale	2.5:1
				appd	JM. P	96.04.23	A3	95256
sheet index	revision sheet	A	A					
		1	2					1 of 2

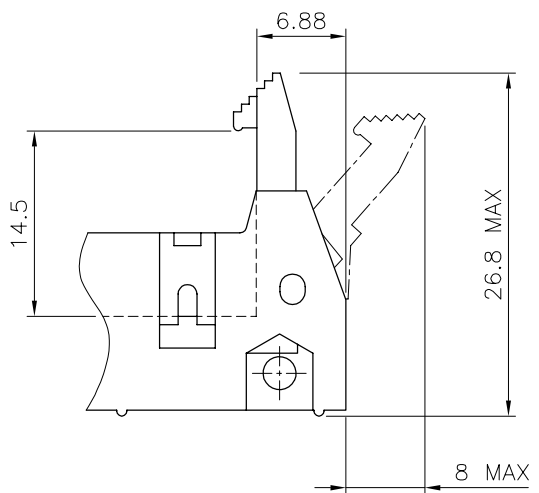
Tous droits strictement réservés. Reproduction ou communication sans l'autorisation écrite de FCI Electronics S.A. est formellement interdite.
 All rights strictly reserved. Reproduction or communication without the written permission of FCI Electronics S.A. is expressly prohibited.

All rights strictly reserved. Reproduction or use in third parties is expressly prohibited without the written permission of FCI Electronics S.A. Copyright © Electronics S.A.

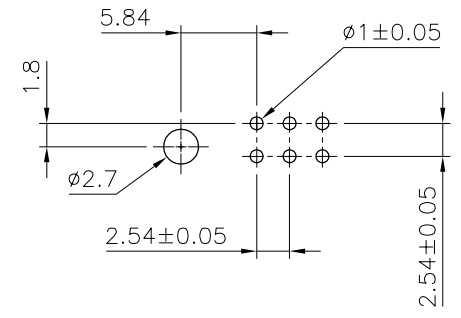
PRODUCT NUMBER	SIZE	DIM "A"	DIM "B"	DIM "C"	DIM "D"	CENTRAL SLOT	LEFT POL KEY	GROOVE
95256-X06	2x3	5.08	13.15	22.86	26.92	NO	NO	NO
95256-X08	2x4	7.62	15.69	25.4	29.46	NO	NO	NO
95256-X10	2x5	10.16	18.23	27.94	32	YES	NO	NO
95256-X14	2x7	15.24	23.31	33.02	37.08	YES	NO	NO
95256-X16	2x8	17.78	25.85	35.56	39.62	YES	YES	YES
95256-X18	2x9	20.32	28.39	38.1	42.16	YES	YES	NO
95256-X20	2x10	22.86	30.93	40.64	44.7	YES	YES	YES
95256-X26	2x13	30.48	38.55	48.26	52.32	YES	YES	YES
95256-X34	2x17	40.64	48.71	58.42	62.48	YES	YES	NO
95256-X40	2x20	48.26	56.33	66.04	70.1	YES	YES	YES
95256-X44	2x22	53.34	61.41	71.12	75.18	YES	YES	YES
95256-X50	2x25	60.96	69.03	78.74	82.8	YES	YES	YES
95256-X60	2x30	73.66	81.73	91.44	95.5	YES	YES	YES
95256-X64	2x32	78.74	86.81	96.52	100.58	YES	YES	YES



LOW PROFILE LATCH



STANDARD LATCH



RECOMMENDED HOLE PATTERN

95256-2YY			●
95256-1YY		●	
95256-0YY	●		
PRODUCT	WITHOUT LATCH	STANDARD LATCH	LOW PROFILE LATCH
CODE "X"	EJECTOR LATCH OPTION		

mat'l. code				tolerances unless otherwise specified		CUSTOMER COPY		ELECTRONICS <small>www.fciconnect.com</small>	
ltr	ecn no	dr	date	linear		projection		title	
A	F60315	OMA	96.04.23					QKIE HEADER	
				angles		mm		R.A. RETENTION LEGS	
				dr	O. MATHEVON			96.04.23	product family
				engr	JM PHAMVAN	96.04.23	size	dwg no	213
				chr	P. NIZZI	96.04.23	scale	2.5:1	sheet
				appd	JM.P	96.04.23	A3	95256	2 of
sheet index	revision sheet								