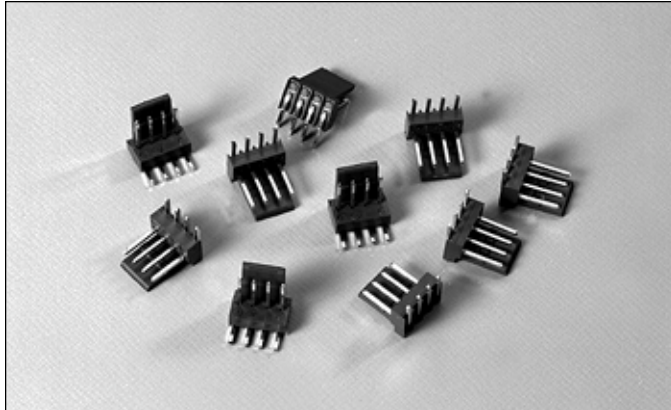


.100" (2.54mm) Single Row, Through Hole, Right Angle, Top Polarizing Locking Headers (Tall Back)



1100 SERIES "TERMACON"

PART NUMBER LEGEND

11XX-22-1XX-XX

- PIN LENGTH (SEE TABLE 2)
- NUMBER OF POSITIONS PER ROW (SEE TABLE 1)
- PIN PLATING (SEE NOTE 2)
- INSULATOR MATERIAL (SEE NOTE 1)

MATING CONNECTORS: 1300 SERIES CRIMP OR IDC STYLE CONNECTORS

NOTES :

- MATERIALS: INSULATOR : 110X - NYLON 6/6, UL94V-0, COLOR: NATURAL(RED)
AVAILABLE ON 2 POS. THRU 8 POS. ONLY.
111X - POLYESTER (PCT) 30% GLASS-FILLED, UL94V-0, COLOR : NATURAL

PIN : PHOSPHOR BRONZE

- PIN PLATING:
11X0 - TIN/LEAD OVER NICKEL PLATE.
11X2 - .000015 GOLD OVER .000030 NICKEL PLATE.
11X8 - .000050 NICKEL PLATE ALL OVER;
.000015 SEL. GOLD PLATE AS INDICATED;
.0001-.0002 SEL. TIN/LEAD AS INDICATED.
11XF - .000050 NICKEL PLATE ALL OVER;
.000030 SEL. GOLD PLATE AS INDICATED;
.0001-.0002 SEL. TIN/LEAD AS INDICATED.
- ALL DIMENSIONS ARE IN IN./ (MM.).
- FOR CIRCUITS 2 THRU 6 LOCKING RAMP WILL BE SOLID.

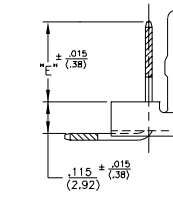
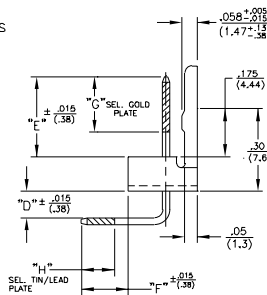
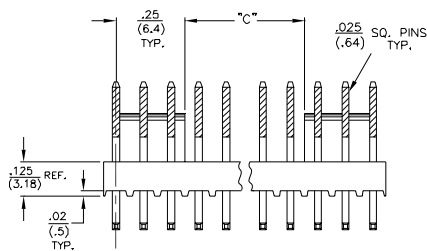
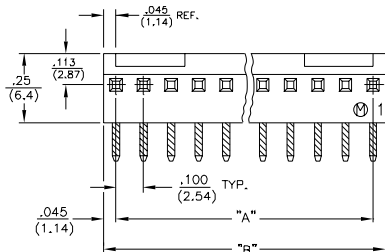
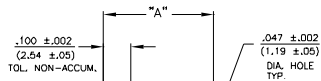


FIGURE 2
OTHERWISE SAME AS FIGURE 1



RECOMMENDED P.C. BOARD LAYOUT

TABLE 1

PART NUMBER	No. OF POS.	"A" ±.010 (±.25)	"B" ±.010 (±.25)	"C" ±.010 (±.25)
11XX-22-102-XX	2	.100 (2.54)	.190 (4.83)	SEE NOTE 5.
↑ -103- ↑	3	.200 (5.08)	.290 (7.37)	↑
-104-	4	.300 (7.62)	.390 (9.91)	
-105-	5	.400 (10.16)	.490 (12.45)	
-106-	6	.500 (12.70)	.590 (14.99)	SEE NOTE 5.
-107-	7	.600 (15.24)	.690 (17.53)	.100 (2.54)
-108-	8	.700 (17.78)	.790 (20.07)	.200 (5.08)
-109-	9	.800 (20.32)	.890 (22.61)	.300 (7.62)
-110-	10	.900 (22.86)	.990 (25.15)	.400 (10.16)
-111-	11	1.000 (25.40)	1.090 (27.69)	.500 (12.70)
-112-	12	1.100 (27.94)	1.190 (30.23)	.600 (15.24)
-113-	13	1.200 (30.48)	1.290 (32.77)	.700 (17.78)
-114-	14	1.300 (33.02)	1.390 (35.31)	.800 (20.32)
-115-	15	1.400 (35.56)	1.490 (37.85)	.900 (22.86)
-116-	16	1.500 (38.10)	1.590 (40.39)	1.000 (25.40)
-117-	17	1.600 (40.64)	1.690 (42.93)	1.100 (27.94)
-118-	18	1.700 (43.18)	1.790 (45.47)	1.200 (30.48)
-119-	19	1.800 (45.72)	1.890 (48.01)	1.300 (33.02)
-120-	20	1.900 (48.26)	1.990 (50.55)	1.400 (35.56)
-121-	21	2.000 (50.80)	2.090 (53.09)	1.500 (38.10)
-122-	22	2.100 (53.34)	2.190 (55.63)	1.600 (40.64)
-123-	23	2.200 (55.88)	2.290 (58.17)	1.700 (43.18)
-124-	24	2.300 (58.42)	2.390 (60.71)	1.800 (45.72)
-125-	25	2.400 (60.96)	2.490 (63.25)	1.900 (48.26)
-126-	26	2.500 (63.50)	2.590 (65.79)	2.000 (50.80)
-127-	27	2.600 (66.04)	2.690 (68.33)	2.100 (53.34)
11XX-22-128-XX	28	2.700 (68.58)	2.790 (70.87)	2.200 (55.88)

TABLE 2

PART NUMBER	DIM.D	DIM.E	DIM.F	DIM.G	DIM.H	SEE FIGURE #
11XX-22-1XX-01	—	.29 (7.4)	.140 (3.56)	.20 (5.1)	.12 (3.0)	FIGURE 2
11XX-22-1XX-02	—	.260 (6.60)	.143 (3.63)	.20 (5.1)	.12 (3.0)	FIGURE 2
11XX-22-1XX-03	.08 (2.0)	.26 (6.6)	.140 (3.56)	—	—	FIGURE 1
11XX-22-1XX-04	.179 (4.55)	.26 (6.6)	.126 (3.20)	—	—	FIGURE 1
11XX-22-1XX-05	.049 (1.24)	.260 (6.60)	.143 (3.63)	—	—	FIGURE 1