

Technical Specifications

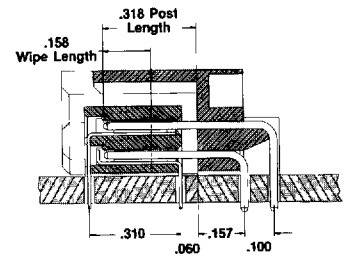
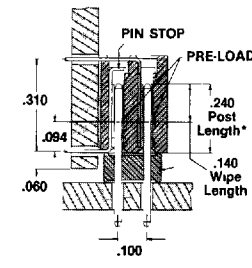
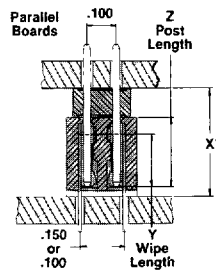
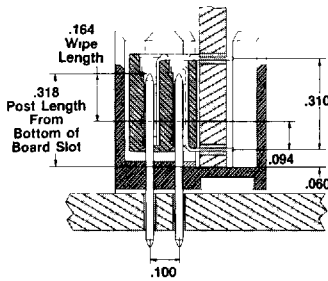
ELCO

Technical Data

Series
8251
8352
8275
8281
8381

Basic grid	100 (2.54) x 100 (2.54)
Insertion Force	1-6 oz per contact
Withdrawal force	75 oz min. per contact
Contact resistance	12 milliohms max. for gold plating
Current rating	3 amperes continuous current shall not cause a temperature rise greater than 30°C above ambient
Insulation resistance	5,000 megohms min. at 500 VDC
Dielectric withstanding voltage	1,000 VAC ms at sea level
Operating temperature	-55°C to +105°C
Insulator material	Thermoplastic polyester, 94 V-O, UL rated
Socket contact material	Phosphor bronze
Pin contact material	Phosphor bronze
Wrap post dimension	025 x 025
Push-out force of post in insulator	8251 - 3 lbs, 8352 - 2 lbs, Straight post headers - 3 lbs, Compliant post headers - 1 lb
Contact plating	Gold over nickel (see table this page) tin/lead

Design Aids



Max. Post Length .300
 Min. Recommended Post Length .170

STANDARD	X	Y	Z
265	.365	.178	.240
.335	.435	.168	.300

*This dimension can be accommodated to any size between 450 max. and 265 min. Tooling charges may apply. Consult factory for details.

Features
Pin Stop.
Preload - to reduce insertion force & to insure interface alignment

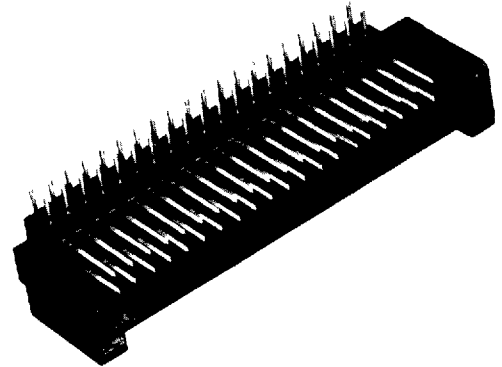
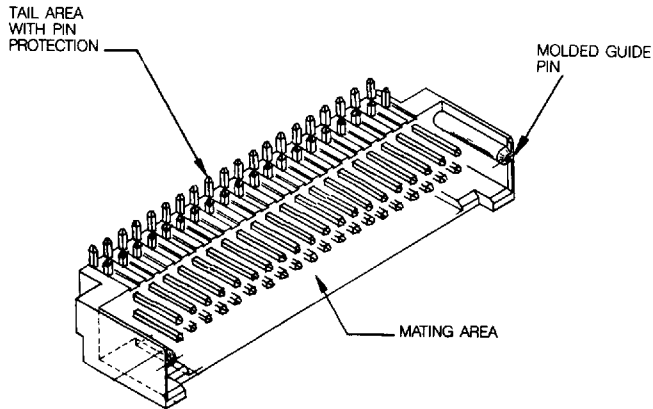
PLATING DESCRIPTION					
MATING AREA	30 Gold	15 Gold	30 Gold	15 Gold	100/200 Tin Lead
TAIL AREA	Flash	Flash	100/200 Tin Lead	100/200 Tin Lead	100/200 Tin Lead

U.L. Recognized

E27610 (M)

Consult factory for additional plating

Shrouded - Three Sides Right-Angle, with Guide Posts Dual Row



Ordering Code

Typical Example 00 8381 120 000 851

SERIES NUMBER

NUMBER OF CONTACTS

10 thru 120 Increments of two.

CONTACT CODE

CODE NO.
000

VARIATION CODE

	PLATING DESCRIPTION				CONTACT TAIL LENGTH F
	30 Gold	15 Gold	30 Gold	15 Gold	
Mating Area	30 Gold	15 Gold	30 Gold	15 Gold	
Tail Area	Gold Flash	Gold Flash	100-200 Tin-Lead	100-200 Tin-Lead	
VARIATION CODE NUMBER					CONTACT TAIL LENGTH F
801	826	851	876	0.125	
802	827	852	877	0.155	

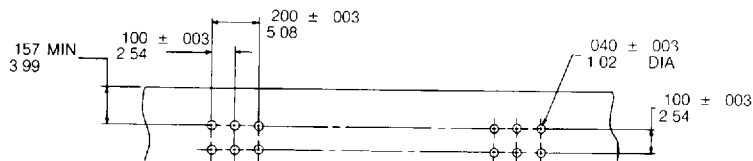
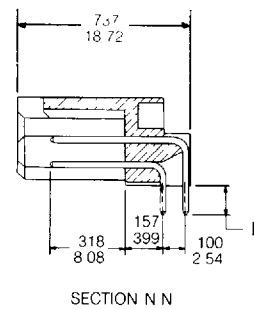
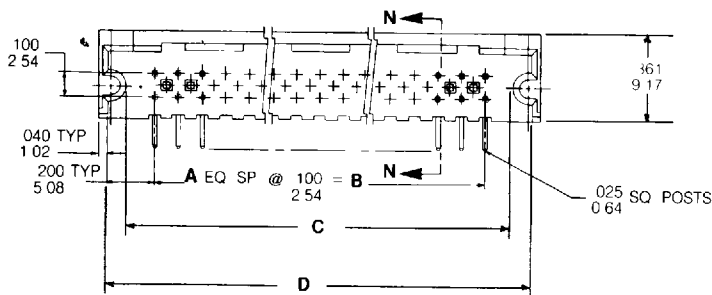
Additional plating and tail lengths available. Consult factory.

■ Recommended for standard applications Available through ELCO franchised distributors

Shrouded - Three Sides Right-Angle, with Guide Posts Dual Row

NO. OF POSITIONS	A	B	C	D	E (REF)
12	5	500 12.7	870 22.1	900 22.9	980 24.9
20	9	900 22.9	1270 32.3	1300 33.0	1380 35.1
24	11	1100 27.9	1470 37.3	1500 38.1	1580 40.1
30	14	1400 35.6	1770 45.0	1800 45.7	1880 47.8
36	17	1700 43.2	2070 52.6	2100 53.3	2180 55.4
40	19	1900 48.3	2270 57.7	2300 58.5	2380 60.5
50	24	2400 60.9	2770 70.4	2800 71.1	2880 73.2
60	29	2900 73.7	3270 83.1	3300 83.8	3380 85.9

NO. OF POSITIONS	A	B	C	D	E (REF)
70	34	3400 86.4	3770 95.6	3800 96.5	3880 98.6
80	39	3900 99.1	4270 108.5	4300 109.2	4380 111.3
90	44	4400 111.8	4770 121.2	4800 121.9	4880 123.9
96	47	4700 119.4	5070 128.8	5100 129.5	5180 131.6
100	49	4900 124.5	5270 133.9	5300 134.6	5380 136.7
110	54	5400 137.2	5770 146.6	5800 147.3	5880 149.4
120	59	5900 149.9	6270 159.3	6300 160.0	6380 162.0



RECOMMENDED PC BOARD HOLE PATTERN
SOLDER TAIL