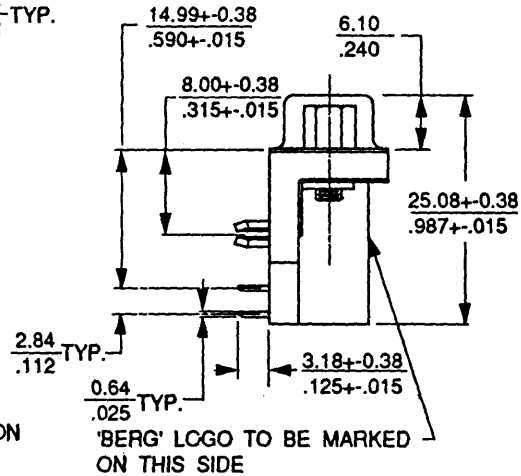
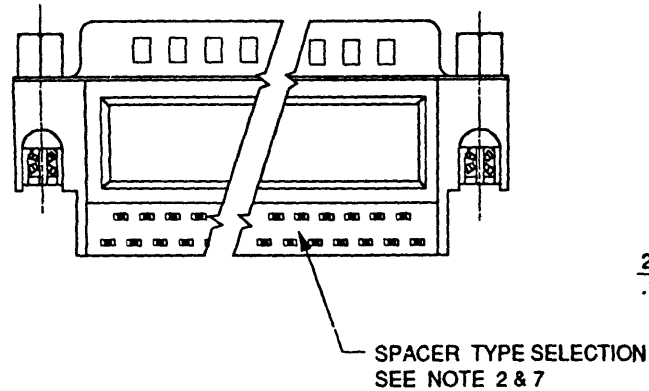
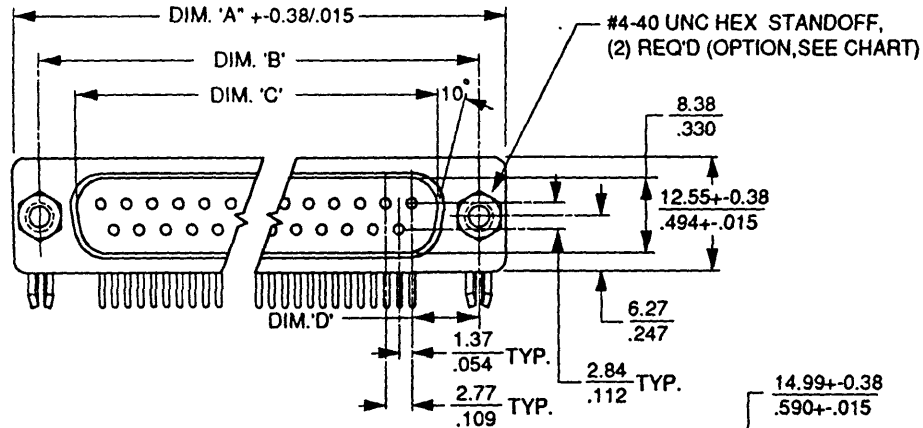


PRODUCT NO	NO. OF POS.	DIM. 'A'	DIM. 'B'	DIM. 'C'	DIM. 'D'
94106 -XXXX09	9	30.84/1.214	24.99/984	16.92/666	6.96/274
↑ -XXXX15	15	39.24/1.545	33.32/1.312	25.25/994	6.96/274
↓ -XXXX25	25	53.04/2.088	47.04/1.852	38.96/1.534	6.91/272
94106 -XXXX37 (NOTE 2)	37	69.34/2.730	63.50/2.500	55.42/2.182	6.83/269



part code SEE NOTE 1				tolerances unless otherwise specified		CUSTOMER COPY	BERG ELECTRONICS
tr	ecm no	dr	date	linear	0.0+-0.38 / .00+-0.015	projection ⊕	title D - SUB, R/A, MALE, .590" FOOT PRINT
A	T30272	JL	9/2/93		0.00+-0.25 / .000+-0.010		
B	T30340	JL	11/3/93	angles	±0°30'	mm ←→	product family D - SUB
				dr	J. LIN 8/31/93	inch	code TWN
				engr	J. LIN 8/31/93	scale	size A3
				chr	J. LIN 8/31/93	N/A	dwg no 94106
				appd	C M CHANG 9/2/93		sheet 1 of 4
sheet	revision	B	B	B	B		
index	sheet	1	2	3	4		

product no
SEE CHART

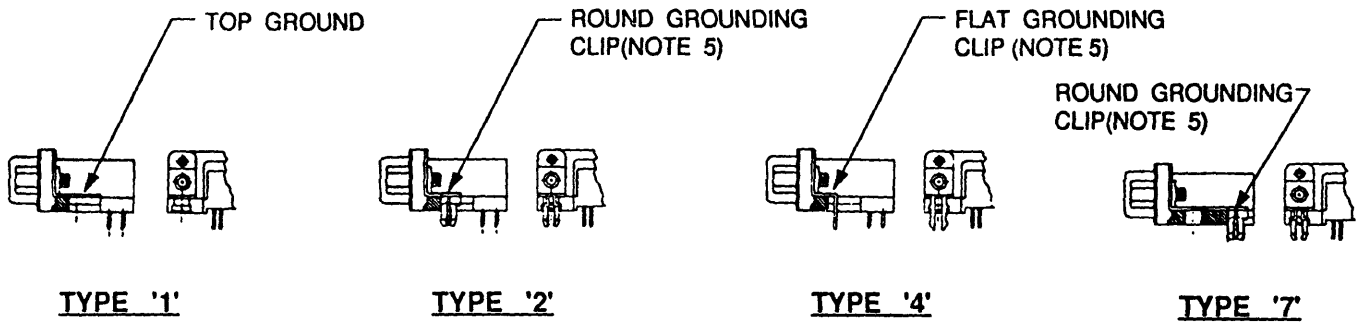


FIGURE 1. OPTIONS FOR GROUNDING CLIP

part code SEE NOTE 1		tolerances unless otherwise specified		CUSTOMER COPY	BERG ELECTRONICS	
ltr	ectn no	dr	date	linear	projection	title
B				0.00-0.38 / .00-.015		D - SUB, R/A, MALE, .590" FOOT PRINT
				0.00-0.25 / .000-.010		
				angles		product family
				$\pm 0^{\circ} 30'$	mm	D - SUB
				dr J. LIN	inch	code
				8/31/93	scale	TWN
				engr J. LIN	N/A	size
				8/31/93		dwg no
				chr J. LIN		A3
				8/31/93		94106
				appd C M CHANG		sheet
				9/2/93		2 of
sheet	revision					
index	sheet	1				

product no
SEE CHART

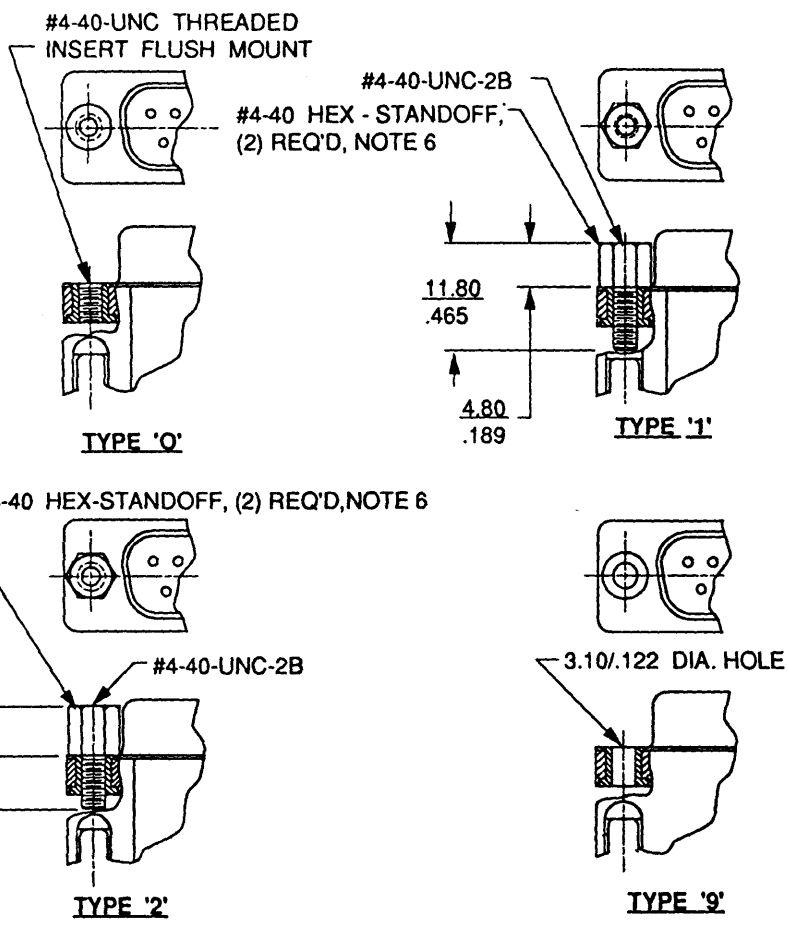


FIGURE 2. OPTIONS FOR HEX-NUT STANDOFF

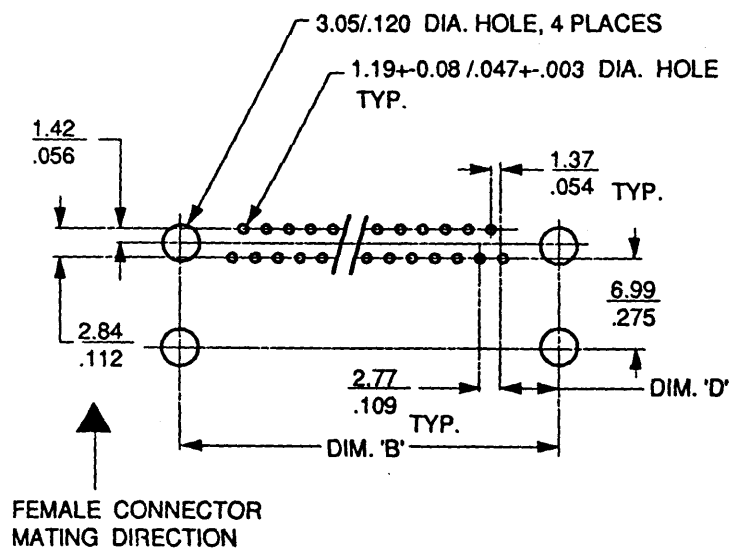


FIGURE 3. RECOMMENDED PCB MOUNTING LAYOUT

mat'l code SEE NOTE 1		tolerances unless otherwise specified		CUSTOMER COPY	BERG ELECTRONICS	
tr	ecn no	dr	date	linear	projection	title
B				0.0+-0.38 / .00+-0.15 0.00+-0.25 / .00+-0.10		D - SUB, R/A, MALE, .590" FOOT PRINT
				angles	$\pm 0^{\circ} 30'$	product family
				dr J. LIN	8/31/93	D - SUB
				enr J. LIN	8/31/93	code
				chr J. LIN	9/2/93	TWN
				appd C M CHANG	9/6/93	sheet
sheet	revision			mm	inch	size
index	sheet	1		mm	inch	dwg no
				scale	N/A	A3
						94106
						3 of

product no
SEE CHART

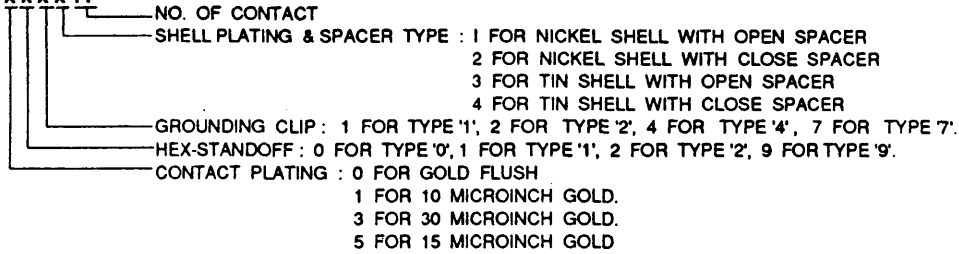
NOTES :

1. MATERIAL :

- a. HOUSING : GF POLYESTER, FLAME RETARDANT PER UL 94V-0, COLOR : BLACK.
- b. SHELL : STEEL STRIP WITH NICKEL OR TIN PLATING, THE SELECTION SEE NOTE 2.
- c. CONTACTS : BRASS WITH GOLD PLATING ON THE CONTACT AREA AND TIN PLATING ON THE SOLDER TAIL. THE SELECTION SEE NOTE 2.

2. THE PART NUMBERS ARE ASSIGNED AS FOLLOWS :

94106 - X X X X Y Y



- 3. RECOMMENDED PCB MOUNTING LAYOUT SHOWN IN FIGURE 3.
- 4. THE OPTIONS FOR GROUND CLIP PER FIGURE 1, AND FOR HEX-STANDOFF PER FIGURE 2.
- 5. GROUNDING CLIP : TYPE '2' AND '4' ARE FOR 3.05/.120 DIA. PCB HOLE.
- 6. BOTH HEX-STANDOFF SHALL BE FASTERNED WITH D-SUB TOGETHER.
- 7. THERE ARE TWO TYPE OF SPACER, ONE IS THE OPEN(STANDARD) TYPE, THE OTHER IS THE CLOSE TYPE; THE SELECTION SEE NOTE 2.

mat'l code SEE NOTE 1				tolerances unless otherwise specified		CUSTOMER COPY		BERG ELECTRONICS	
lir	ecn no	dr	date	linear	0.0+-0.38 / .00+-0.015	projection		title	
B					0.00+-0.25 / .000+-0.010			D - SUB, R/A, MALE, .590" FOOT PRINT	
				angles	+0° 30'		product family	D - SUB	
				dr	J. LIN			8/31/93	code
				engr	J. LIN	8/31/93	size	chw no	
				chr	J. LIN	8/31/93	scale	A3	
				appd	C M CHANG	9/2/93	NA	94106	
sheet	revision							4 of	
Index	sheet	1							