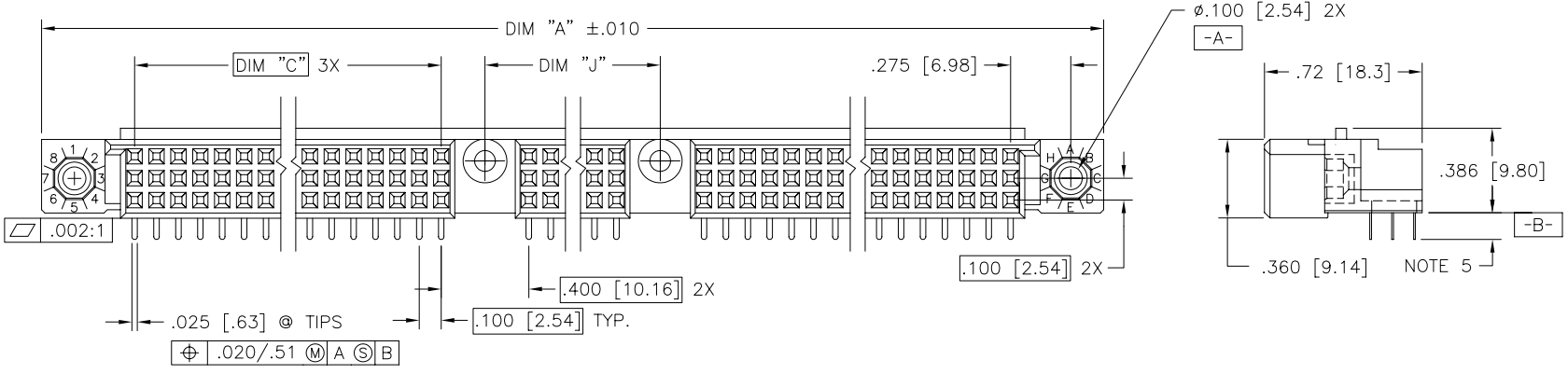
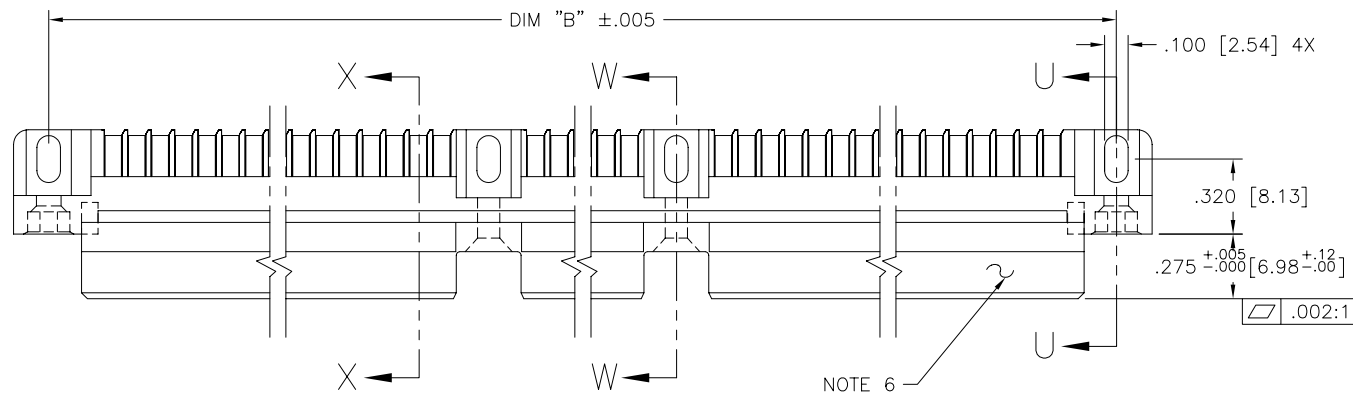




FCIconnect.com

Copyright FCI

PRODUCT NUMBER
SEE NOTE 1



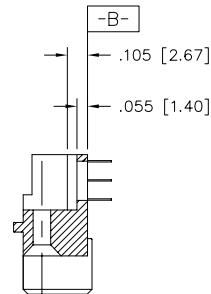
mat'l. code NOTE 3		surface ISO 1302 ✓	tolerance ISO 406 ISO 1101	projection INCH/MM	product family HPC
ltr	ecm no	dr	date	tolerances unless otherwise specified	title
E	V40497	PDP	3/8/94	angles	3 ROW R/A RECEPTACLE SOLDER TAIL, 2 GUIDE PIN
F	V40954	GIP	5/31/94	linear	
G	V41511	GAH	10/13/94	0°±2'	scale 1:1
H	V82250	HTB	12/28/98	dr	D.SHEAFER
J	V00253	JWS	1/12/00	enr	S.CLARK
K	V03-0301	TAB	4/30/03	chr	S.CLARK
L	M06-0283	MHT	7/27/06	appd	S.CLARK
sheet	revision	L	L		
index	sheet	1	2		



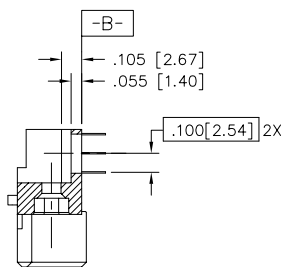
dwg no 50002
sheet 1 of 2 size A3
type Product Customer Drawing

form: A3

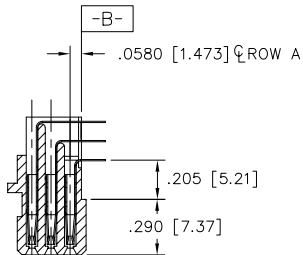
PRODUCT NUMBER	DIM.	LENGTH FORMULAS
SEE NOTE 1	DIM A	$.100/2.54 \times \text{NO. OF COLUMNS} + 1.35/34.3$
	DIM B	$.100/2.54 \times \text{NO. OF COLUMNS} + 1.050/26.67$
	DIM C	$.100/2.54 \times \text{NO. OF COLUMNS DIVIDED BY 3} - .100/2.54$
	DIM J	$.100/2.54 \times \text{NO. OF COLUMNS DIVIDED BY 3} + .300/7.62$



SECTION W-W



SECTION U-U



SECTION X-X

NOTES:

- PRODUCT NUMBERING CODE:
50002 - X YYY Z
 - X: TAIL LENGTH (NOTE 5)
 - YYY: NO. OF POSITIONS (NOTE 2)
 - Z: PLATING (NOTE 4)
 - BASE NUMBER
- PRODUCT NUMBERING CODE FOR SELECT LOAD PART NUMBERS:
50002 - XYYYY
 - X: SEQUENCE NUMBER
 - ALWAYS 'XX'
 - BASE NUMBER

② THIS PRODUCT IS CONFIGURED IN SIZES OF 30 THRU 150 COLUMNS IN INCREMENTS OF THREE.
i.e.: 30,33,36,39.....147,150.

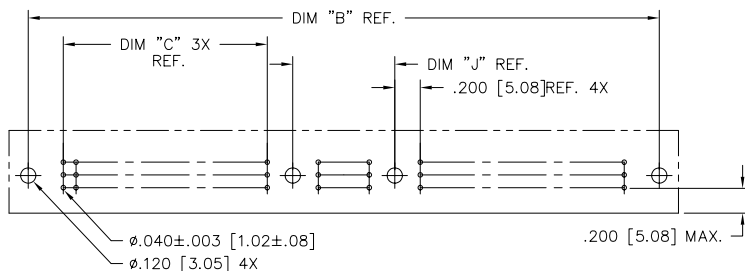
③ HOUSING MATERIAL: GLASS AND MINERAL FILLED THERMOPLASTIC.
CONTACT MATERIAL: BeCu

④ PLATING CONTACT AREA OPTIONS:
1 = 30u"/.76u GOLD
3 = 50u"/1.27u GOLD
5 = 30u"/.76u GXT
ALL SOLDER TAILS TIN/LEAD

⑤ TAIL LENGTH OPTIONS:
E = .125±.010 / 3.18±.25
F = .145±.010 / 3.68±.25
H = .180±.010 / 4.57±.25

⑥ COMPANY NAME, PART NUMBER AND LOT CODE TO APPEAR ON THIS SURFACE PER BUS-12-108.

⑦ FOR DOCUMENTATION MENU, SEE SPECIFICATION BUS-01-057.



RECOMMENDED PCB LAYOUT
(ALL HOLES LOCATED ON .100 [2.54] GRID UNLESS OTHERWISE SPECIFIED)

mat'l. code NOTE 3		surface ISO 1302 ✓	tolerance ISO 406 ISO 1101	projection INCH/MM	product family HPC
ltr		tolerances unless otherwise specified		scale 1:1	title 3 ROW R/A RECEPTACLE SOLDER TAIL, 2 GUIDE PIN
ecn no dr		angles	linear		
date		0°±2'	.xx±.01/.3 .xxx±.005/.13 .xxxx±.0020/.051	dwg no sheet 2 of 2 size	
dr		D.SHEAFER	1/4/90	50002 A3	
enr		S.CLARK	1/4/90	type Product Customer Drawing	
chr		S.CLARK	1/4/90		
appd		S.CLARK	1/4/90		
sheet index	revision sheet				



Copyright FCI