

## FEATURES AND SPECIFICATIONS

### Features and Benefits

- Sizes 8, 10 and 22 circuits
- Low profile for tight packaging applications
- Low insertion force and secure mating retention
- Flanges for screw mounting
- Optional metal peg for quick assembly

### Reference Information

Product Specification: PS-35354  
 Packaging: Tray or bag  
 Mates With: [35509](#), [35200](#) and [35510](#) housings  
 Designed In: Millimeters

### Electrical

Voltage: 300V  
 Current: 6.0A max.  
 Contact Resistance: 6mΩ max.  
 Dielectric Withstanding Voltage: 1000V  
 Insulation Resistance: 100 MΩ min.

### Mechanical

Mating Force: 12.0kgf max.  
 Unmating Force: 12.0kgf max.  
 Durability: 50 cycles

### Physical

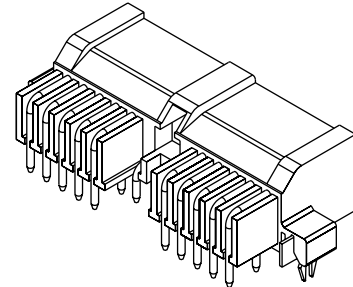
Housing: Polyester, UL 94-HB  
 Pin: Brass  
 Plating: Tin  
 Operating Temperature: -40 to +120°C



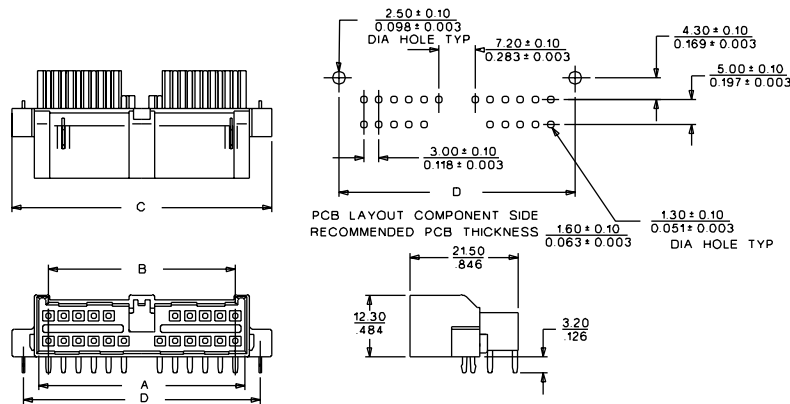
# 1.00mm (.039") Diameter Wire-to-Board Header

**35356/35009/35358**

**Dual Row**



## CATALOG DRAWING (FOR REFERENCE ONLY)



## ORDERING INFORMATION AND DIMENSIONS

Circuits	Order No.	Dimension			
		A	B	C	D
8	35356-0810	16.00 (.630)	12.00 (.472)	26.60 (1.047)	22.10 (.870)
10	35009-2011	18.90 (.744)	15.00 (.591)	30.50 (1.201)	25.20 (.992)
22	35358-2210	40.90 (1.610)	37.20 (1.465)	51.30 (2.020)	46.80 (1.843)