

.393"/.314" (10mm/8mm) 1080 SERIES CRIMP TERMINAL HOUSING

SPECIFICATION

- * Current Rating:
5 A
- * Withstanding Voltage:
1500 VAC (1 min.)
- * Insulation Resistance:
1000 MΩ min.
- * Contact Resistance:
20 mΩ max.
- * Operating Temperature:
-40°C to +85°C

MATERIAL

- * Terminal: Brass, Tin Plate
- * Housing: NYLON 66
- * Wafer: Brass, ϕ 2.36mm
Pin, Tin plate

ORDER INFORMATION

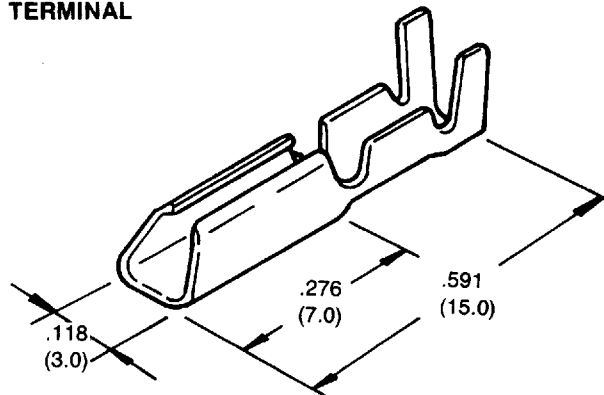
Housing
H1080 - XX
|
No. of Contact
1~6

Terminal
T1080

Wafer
P1080 - XX
|
No. of Contact
1~6

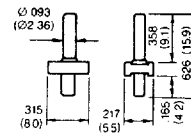
Specifications are subject to change without notice

TERMINAL

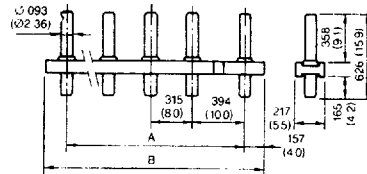


HOUSING

(1P)

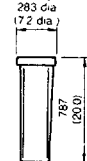


(2P ~ 6P)

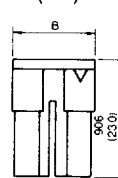


BASE PIN ASSEMBLY

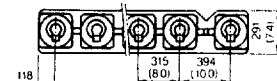
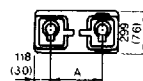
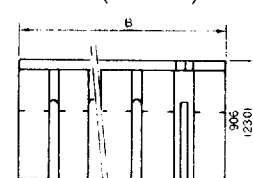
(1P)



(2P)



(3P ~ 6P)



HOUSING

POS	A	B
1	—	—
2	10.0	16.0
3	18.0	24.0
4	26.0	32.0
5	34.0	40.0
6	42.0	48.0

WAFER

POS	A	B
1	—	8.0
2	10.0	18.0
3	18.0	26.0
4	26.0	34.0
5	34.0	42.0
6	42.0	50.0