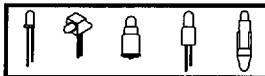


LED®



T1 (3mm) PC BOARD LEDs

DIFFUSED, CLEAR & WATER CLEAR

PART NO:

PC120 TR5-

MODEL	LENS, COLOR, BRIGHT	LED COLOR	LEDTRONICS LED USED	ELECTRO-OPTICAL CHARACTERISTICS Ta=25°C If=100µA(MAX)				FEATURES
				If mA	Iv mcd min/typ	Vf typ/max	λ P nm	
T1 (3mm) RT. ANGLE DIFFUSED INDICATOR PCB LEDs								
PC120	TR6	ULTRA RED	L120TR6N	20	8.7/48	1.8/2.4	660	STD PRODUCT LEAVE BLANK 140=LEADS CUT .140 UNDER CASE HT=HI-TEMP PLASTIC CASE SO=STAND OFF P= LOCATING PIN
PCM120	TR5 (N)	HI-EFF RED	L120TR5N	20	3.4/11	2.0/2.8	635	
PCL120	TR5H	HI-EFF RED	L120TR5H	20	14/28	1.8/2.2	635	
SM120	TR1	STD RED	L120TR1N	20	0.3/0.8	1.7/2.0	655	
SMM120	TO5 (N)	ORANGE	L120TO5N	20	0.8/4	2.1/2.8	610	
	TY3K	3KmcD YELLOW	L120TY3KN	20	110/220	1.9/2.4	590	
	TY5 (N)	AMBER YELLOW	L120TY5N	20	3.4/11	2.1/2.8	585	
	TY5H	AMBER YELLOW	L120TY5H	20	21/42	1.9/2.7	585	
	TG6	ULTRA GREEN	L120TG6	20	22/44	2.1/2.8	565	
	TG5 (N)	HI-EFF GREEN	L120TG5N	20	3.4/11	2.1/2.8	565	
	TG5H	HI-EFF GREEN	L120TG5H	20	28/56	1.8/2.2	565	
TPG5	PURE GREEN	L120TPG5	20	4/8	2.1/2.5	555		
TB4	BLUE	L120TB4	20	2/3.5	3.2/3.7	470		

T1 (3mm) RT. ANGLE CLEAR ILLUMINATOR PCB LEDs								
PC120	CWR400	ULTRA RED	L120CWR400	20	160/400	1.7/2.2	660	STD PRODUCT LEAVE BLANK 140=LEADS CUT .140 UNDER CASE HT=HI-TEMP PLASTIC CASE SO=STAND OFF P= LOCATING PIN
PCM120	CWR6N	ULTRA RED	L120CWR6N	20	19/80	1.8/2.4	660	
PCL120	CWR5N	HI-EFF RED	L120CWR5N	20	8/24	2.0/2.8	635	
SM120	CR5 (N)	HI-EFF RED	L120CR5N	20	8/24	2.0/2.8	635	
SMM120	CW05(N)	ORANGE	L120CW05N	20	6/16	2.0/3.0	610	
	CWY3K	3KmcD YELLOW	L120CWY3K	20	100/250	1.9/2.6	590	
	CWY5N	AMBER YELLOW	L120CWY5N	20	8/24	2.2/2.8	585	
	CY5 (N)	AMBER YELLOW	L120CY5N	20	8/24	2.1/2.8	585	
	CWLY5	LIME YELLOW	L120CWLY5	20	10/15	2.1/2.8	570	
	CWG6	ULTRA GREEN	L120CWG6	20		2.1/2.8	565	
	CWG5N	HI-EFF GREEN	L120CWG5N	20	8/24	2.1/2.8	565	
CG5 (N)	HI-EFF GREEN	L120CG5N	20	8/24	2.1/2.8	565		
CWPG5	PURE GREEN	L120CWPG5	20	10/15	2.1/2.8	555		
CWB5	BLUE	L120CWB5	20	7/10	3.2/3.7	470		

T1 (3mm) LOW CURRENT DIFFUSED INDICATOR PCB LEDs								
PC120	TR5N-LC	HI-EFF RED	L120TR5N-LC	2	1.6/2.2	1.8/2.2	635	SAME AS ABOVE
PCM120	TR5H-LC	HI-EFF RED	L120TR5H-LC	2	1.8/2.4	1.8/2.2	635	
PCL120	TY5N-LC	AMBER YELLOW	L120TY5N-LC	2	1.7/2.3	1.9/2.7	585	
SM120	TY5H-LC	AMBER YELLOW	L120TY5H-LC	2	1.6/2.2	1.9/2.7	585	
SMM120	TG5N-LC	HI-EFF GREEN	L120TG5N-LC	2	1.6/2.2	1.8/2.2	565	
	TG5H-LC	HI-EFF GREEN	L120TG5H-LC	2	2.1/2.8	1.9/2.6	565	

SPECIALS

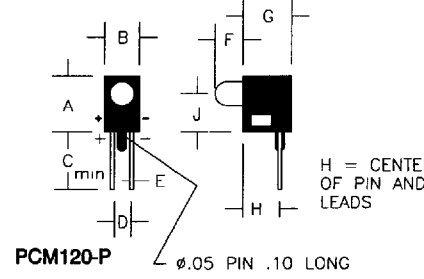
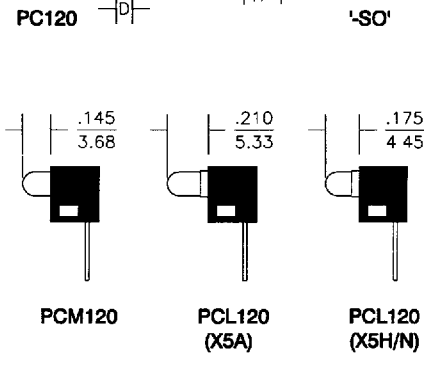
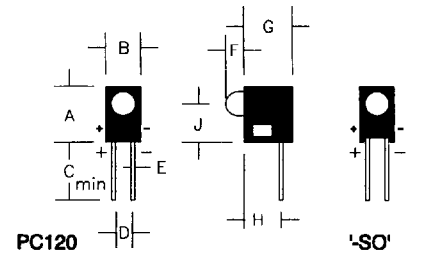
- 5V & 12V INTEGRATED RESISTOR LEDS
- SURFACE MOUNT PCBs W/HI-TEMP CASE
- BICOLOR/TRICOLOR LEDS
- MULTIPLE LED ARRAYS
- INFRARED LEDS

Topr = -30°C TO +85°C Tstg = -30°C TO +100°C

MECHANICAL SPECIFICATIONS

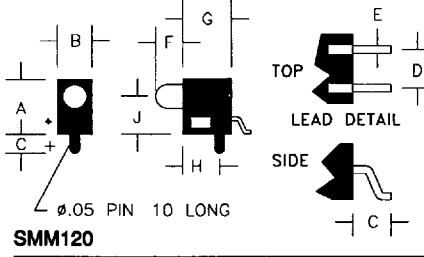
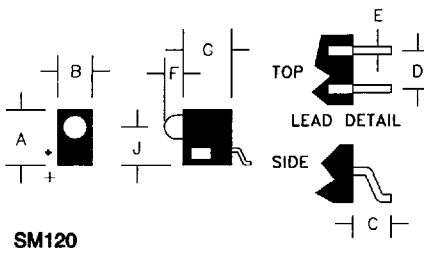
TX5N & CX5N DIRECTLY REPLACES TX4 & CX4 LEDS

MODEL	A (mm)	B (mm)	C (mm)	D (mm)	E (mm)	F (mm)	G (mm)	H (mm)	J (mm)
PC120	.290" (7.37)	.180" (4.57)	.500" (12.7)	.100" (2.54)	.020" (0.51)	.095" (2.41)	.250" (6.35)	.200" (5.08)	.200" (5.08)
PCM120-P	.290" (7.37)	.180" (4.57)	.500" (12.7)	.100" (2.54)	.020" (0.51)	.145" (3.68)	.250" (6.35)	.200" (5.08)	.200" (5.08)
SM120	.290" (7.37)	.180" (4.57)	.100" (2.54)	.100" (2.54)	.020" (0.51)	.095" (2.41)	.250" (6.35)		.200" (5.08)
SMM120	.290" (7.37)	.180" (4.57)	.100" (2.54)	.100" (2.54)	.020" (0.51)	.145" (3.68)	.250" (6.35)	.200" (5.08)	.200" (5.08)



HOUSING MAT'L., COLOR
 NYLON OR VALOX BLACK
 UL94V0 GRAY

SURFACE MOUNT



HOUSING MAT'L., COLOR
 UL94V0 GRAY