

10078991-GXX-XXULF

PLATING
0.76µm GXT (Pd Ni WITH GOLD FLASH)
OVER 1.27µm NICKEL UNDERPLATE

TAIL LENGTH

STYLEDIM B	
2	2.5
3	3.1

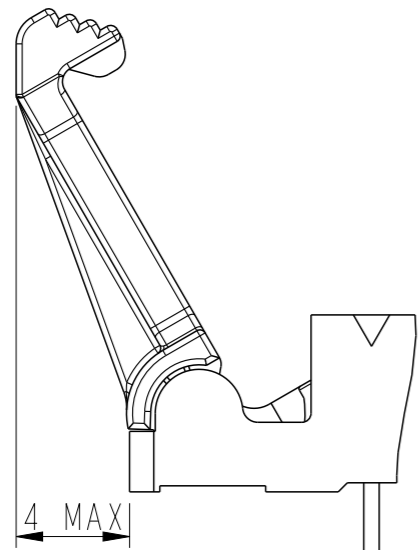
LATCH TYPE:

1-STANDARD : FOR USE WITH STRAIN-RELIEF 10073978
2-LOW PROFILE : FOR USE WITHOUT STRAIN-RELIEF

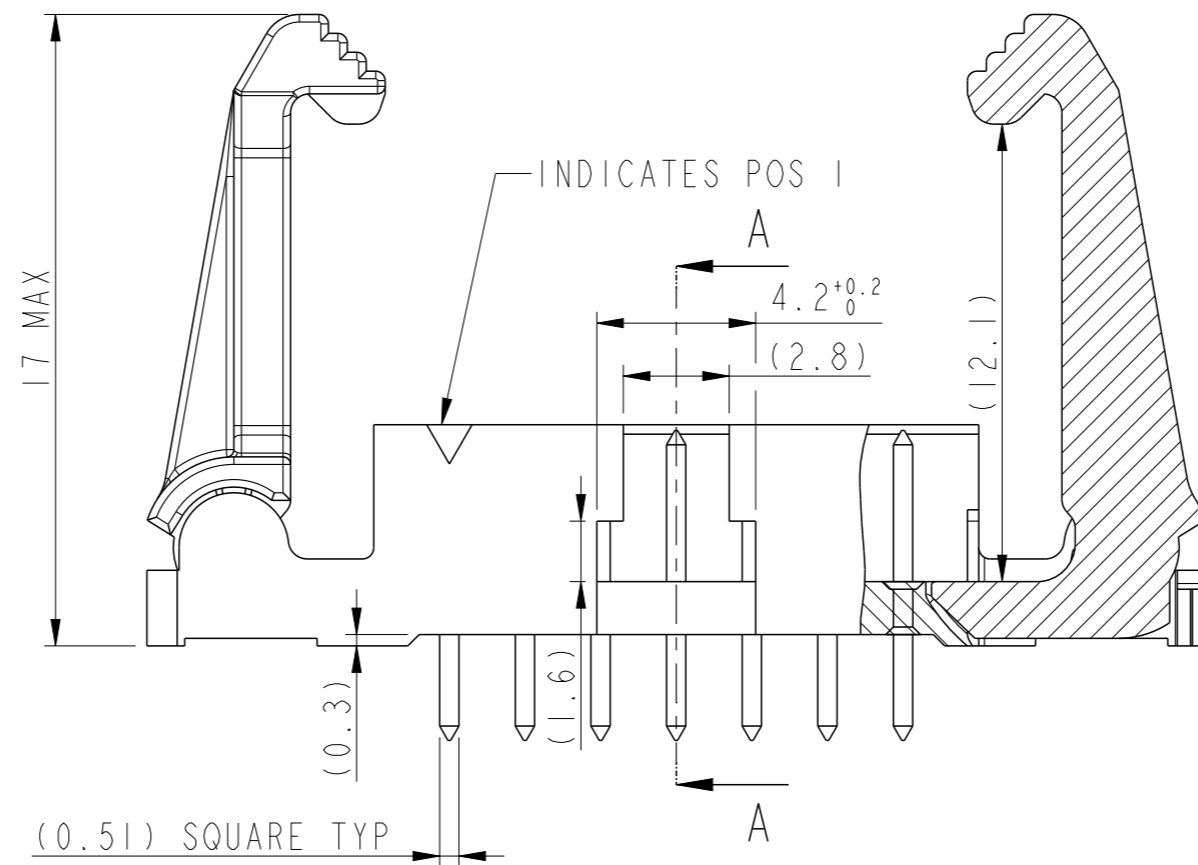
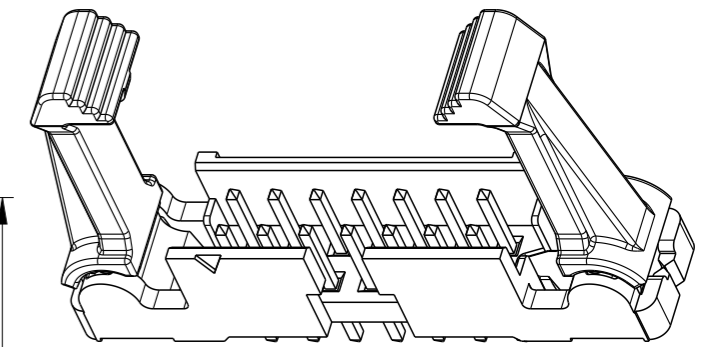
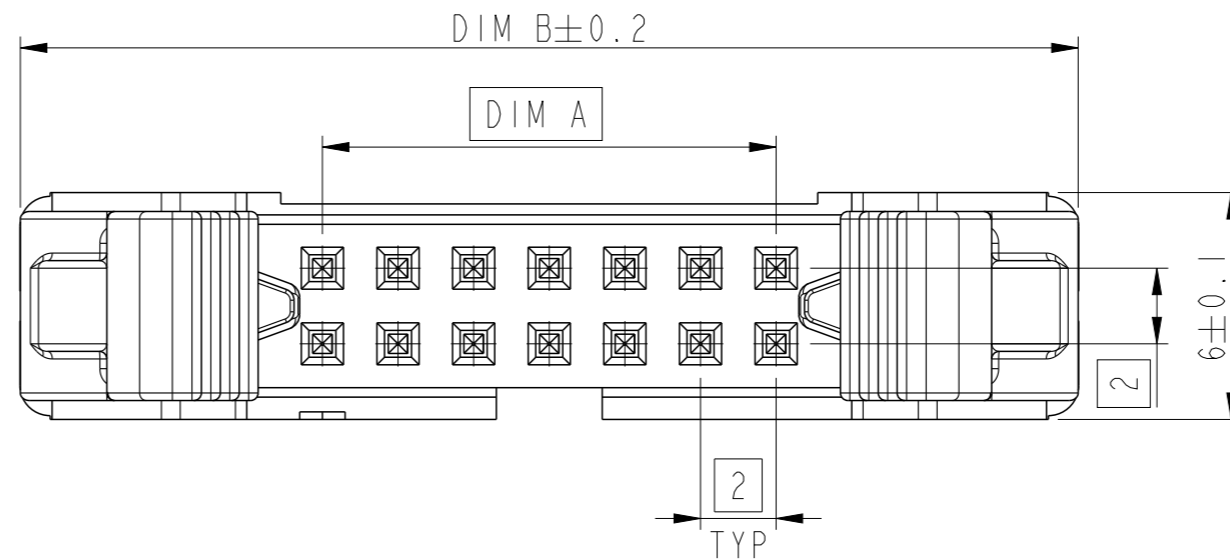
SIZE: TOTAL NB OF POSITIONS
SEE SHEET 2

PACKAGING. SEE NOTE 4

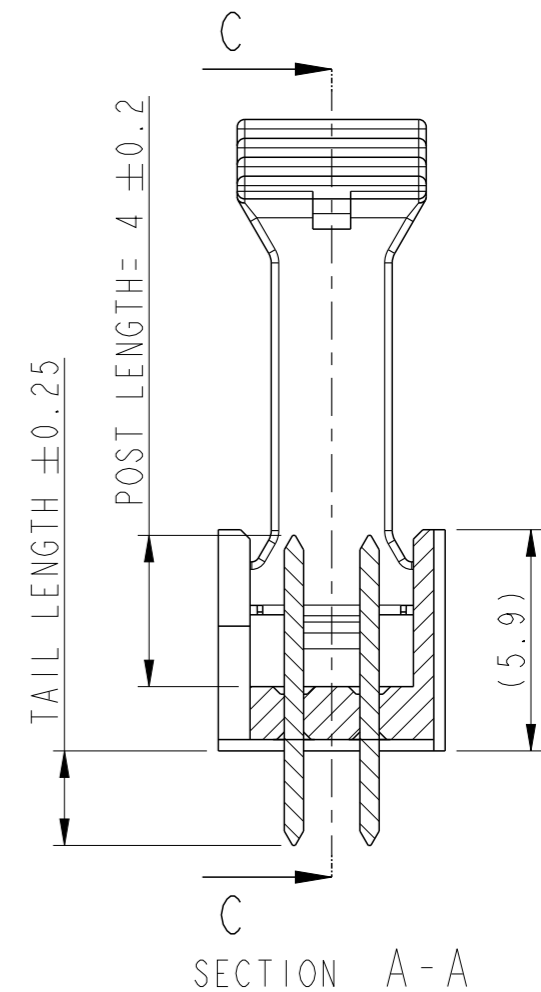
SUFFIX LETTER "LF" INDICATES
THE PRODUCT IS ROHS
COMPLIANT. SEE NOTE 5.



OPENED POSITION



SECTION C-C
VIEW WITH STANDARD LATCH



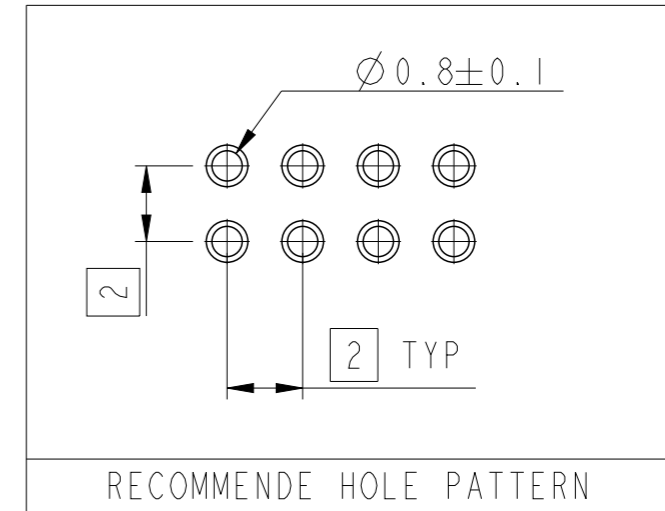
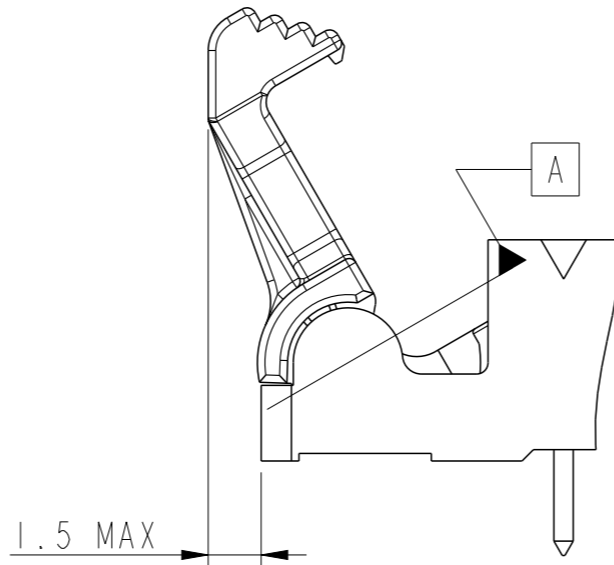
SECTION A-A

NOTES :

- 1- MATERIAL HOUSING: HIGH TEMPERATURE THERMOPLASTIC
UL 94 VO . COLOR CREAM.
- MATERIAL LATCH : HIGH TEMPERATURE THERMOPLASTIC
UL 94 VO . COLOR BLACK.
- 2 - MATERIAL TERMINAL : COPPER ALLOY
- 3- PIN RETENTION IN EITHER DIRECTION : 7N MIN
- 4 - PACKAGING
U= TUBE WITHOUT PICK UP CAP.
- 5- ROHS COMPATIBLE PRODUCT SPECIFICATIONS :
a- PLATING :
"LF" MEANS THE PRODUCT IS LEAD FREE
2µm MINIMUM MATTE TIN OVER 1.27 µm NICKEL UNDERPLATE
- b- MANUFACTURING PROCESS COMPATIBILITY
THE HOUSING WILL WITHSTAND EXPOSURE TO 260 °C ± 5 °C SOLDER BATH
TEMPERATURE FOR 5 SECONDS IN A WAVE SOLDER APPLICATION WITH A 1.6mm
THICK CIRCUIT BOARD.
- c- LABELLING
MEETS PACKAGING SPECS AS PER GS-14 - 920.
- d- THIS PRODUCT MEETS EUROPEAN DIRECTIVES
AND OTHER COUNTRY REGULATION AS DESCRIBED IN GS-2 2-008.

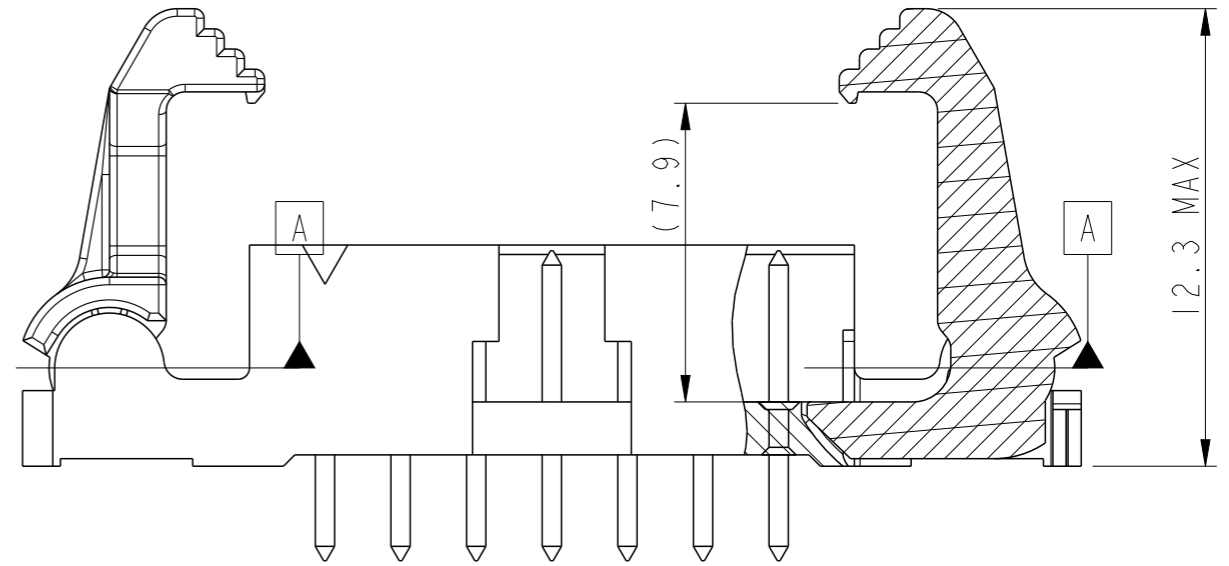
spec ref	-	dr	Sawanth, Ambaa	2020/12/08	projection	mm	size	A3	scale	5:1
tolerance std	ISO 406 ISO 1101	eng	Detouillon, Da	2020/12/22			ecn no	-	rel level	Released
TOLERANCES UNLESS OTHERWISE SPECIFIED		chr	-	-			product family	-		
surface	linear	appr	Wollin, Severi	2020/12/22			dwg no	10078991	rev	A
ISO 1302	angular	0°	±2°	cat. no.	-	Product - Customer Drw	sheet 1 of 2			

SIZE	POSITIONS	DIM A	DIM B
06	2X3	4.00	20.00
08	2X4	6.00	22.00
10	2X5	8.00	24.00
12	2X6	10.00	26.00
14	2X7	12.00	28.00
24	2X12	22.00	38.00
30	2X15	28.00	44.00
40	2X20	38.00	54.00
44	2X22	42.00	58.00
50	2X25	48.00	64.00



PRODUCT USED IN COMBINATION WITH IDC RECEPTACLE P/Ns 89361 & 89941

<p>WITH STRAIN RELIEF ACCESSORY -STANDARD LATCH-</p>	<p>WITHOUT STRAIN RELIEF ACCESSORY -LOW PROFILE LATCH-</p>
--	--



SECTION C-C
EXAMPLE 10078991-G02-14YLF
LOW PROFILE LATCH

spec ref	-	dr	Sawanth, Ambaa	2020/12/08	projection	mm	size	A3	scale	5:1
tolerance std	ISO 406 ISO 1101	eng	Detouillon, Da	2020/12/22			ecn no	-	rel level	Released
TOLERANCES UNLESS OTHERWISE SPECIFIED		chr	-	-			product family	-	rel level	Released
surface	linear	0.X	±0.3	Amphenol FCI	EJECT LATCH HEADER		dwg no	10078991	rev	A
		0.XX	±0.10		VERTICAL TMT					
	angular	0°	±2°		cat. no.	-	Product - Customer Drw	sheet 2 of 2		