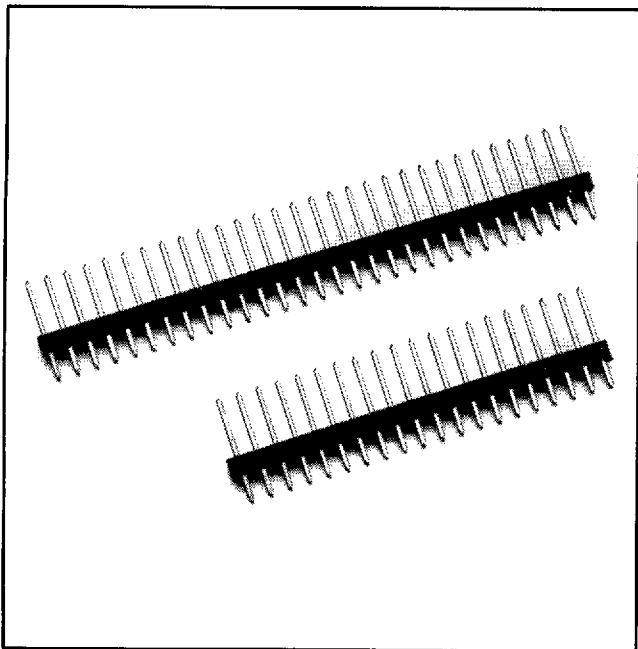


# .100" Pin Strip Header

.295 Mating Length, Straight Solder Tails

929 Series



- Stackable
- Tin lead or gold plating available
- Solder stand-offs facilitate production wave soldering
- Board pin retention feature available

52

TS-0154-06  
Sheet 1 of 2

## Physical

### Insulation

Material: Glass Filled Polyester (PBT)  
Flammability: UL 94V-0  
Color: Black

### Contact

Material: Copper Alloy  
Plating  
Underplate: 50  $\mu$ " [ 1.27  $\mu$ m ] Nickel — QQ-N-290, Class 2  
Wiping Area & Solder Tails: Gold — MIL-G-45204, Type II, Grade C or  
Tin Lead — MIL-P-81728

Note: The location and thickness of the contact plating is determined by the part number. Refer to ordering information.

## Electrical

Current Rating: 2.5 A  
Insulation Resistance:  $>5 \times 10^9 \Omega$  at 500 VDC  
Withstanding Voltage: 1500 Vrms at Sea Level

## Environmental

Temperature Rating:  $-40^\circ\text{C}$  to  $+105^\circ\text{C}$

UL File No.: E68080

3M Electronic Products Division

6801 River Place Blvd.  
Austin, TX 78726-9000

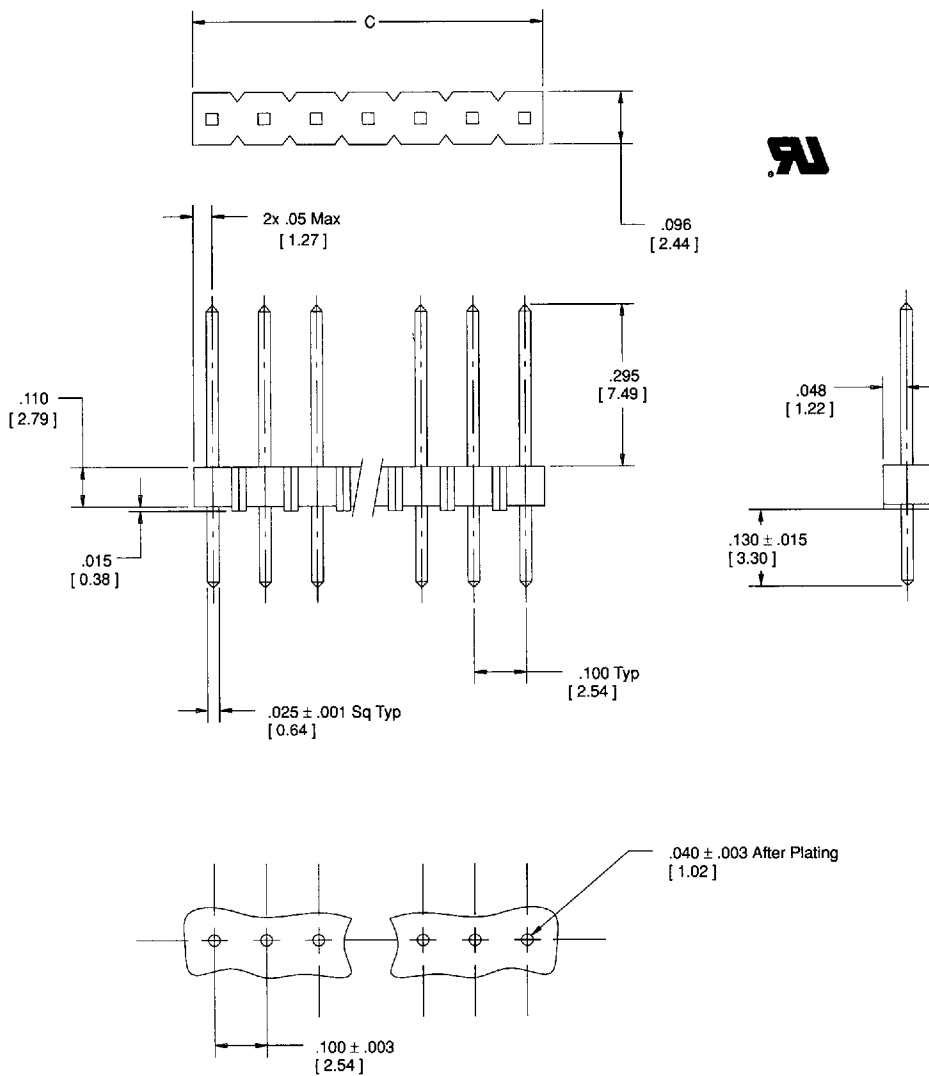
9005413 0000146 075

# .100" Pin Strip Header

.295 Mating Length, Straight Solder Tails

929 Series

Sheet 2 of 2



Pin Qty Code	Dim C (Max) See Note 1
01	.10 [ 2.5 ]
02	.20 [ 5.1 ]
03	.30 [ 7.6 ]
04	.40 [ 10.2 ]
05	.50 [ 12.7 ]
06	.60 [ 15.2 ]
07	.70 [ 17.8 ]
08	.80 [ 20.3 ]
09	.90 [ 22.9 ]
10	1.00 [ 25.4 ]
11	1.10 [ 27.9 ]
12	1.20 [ 30.5 ]
13	1.30 [ 33.0 ]
14	1.40 [ 35.6 ]
15	1.50 [ 38.1 ]
16	1.60 [ 40.6 ]
17	1.70 [ 43.2 ]
18	1.80 [ 45.7 ]
19	1.90 [ 48.3 ]
20	2.00 [ 50.8 ]
21	2.10 [ 53.3 ]
22	2.20 [ 55.9 ]
23	2.30 [ 58.4 ]
24	2.40 [ 61.0 ]
25	2.50 [ 63.5 ]
26	2.60 [ 66.0 ]
27	2.70 [ 68.6 ]
28	2.80 [ 71.1 ]
29	2.90 [ 73.7 ]
30	3.00 [ 76.2 ]
31	3.10 [ 78.7 ]
32	3.20 [ 81.3 ]
33	3.30 [ 83.8 ]
34	3.40 [ 86.4 ]
35	3.50 [ 88.9 ]
36	3.60 [ 91.4 ]

Recommended Hole Pattern

Inch [mm]			
Tolerance Unless Noted			
	.0	.00	.000
Inch	± .1	± .01	± .005

[ ] Dimensions for Reference Only

Notes:

- Dimension C is a maximum when the pin strip is cut to length, not when the strip is broken to length.
- Board pin retention feature available: Change from "929" to "9R9" when ordering.

TS-0154-06

## Ordering Information

9294X0-01-XX-X

Plating:

- 0 = Wiping Area & Tails  
100 μ" [ 2.54 μm ] Tin Lead
- 5 = Wiping Area & Tail: Gold

Pin Quantity:  
See Table 1

Gold Plating Thickness:  
(No entry required for Tin Lead Product)

1 = 10 μ" [ 0.25 μm ] all over