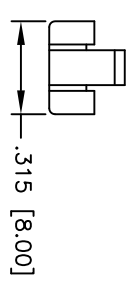
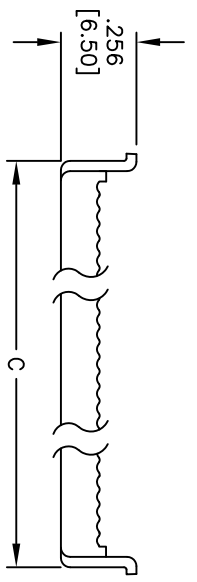
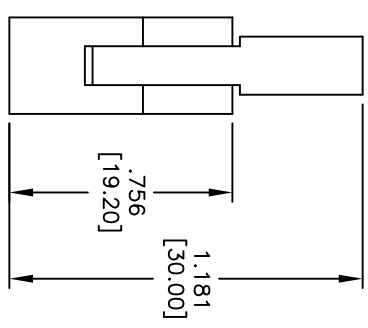
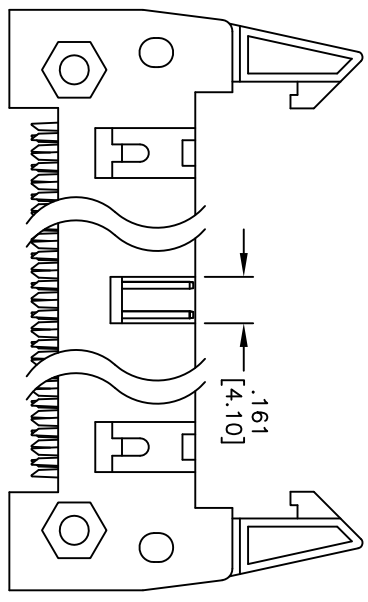
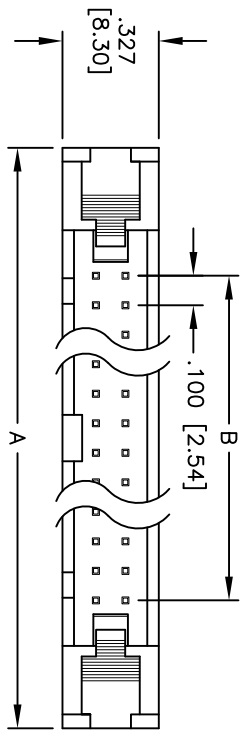


APPROVED: \_\_\_\_\_  
 DATE: \_\_\_\_\_ TITLE: \_\_\_\_\_

Rev	AWO #	Description	Date	Appr
-		RELEASED	9/11/06	
A		REVISED DIM.	04/13/12	



**SPECIFICATIONS:**

**Material:**  
 Insulator: PBT, glass reinforced, rated UL 94V-0  
 Insulator color: Gray

**Contacts:** Copper Alloy

**Plating:**  
 Gold flash over Nickel underplate on mating area,  
 Tin over Copper underplate on IDC area.

**Electrical:**  
 Operating voltage: 250 VAC max.  
 Current rating: 3 Amp max.  
 Contact resistance: 30 mohms max. initial  
 Insulation resistance: 5,000 Mohms min.  
 Dielectric withstanding voltage: 1,000 VAC for 1 minute

**Temperature Rating:**  
 Operating temperature: -55°C to +105°C

**Environmental:**  
 Lead free, RoHS compliant

**ROHS COMPLIANT**

**Positions:** 10, 14, 16, 20, 24, 26, 30, 34, 40, 50, 60, & 64  
 A = .100 [2.54] x No. of Positions per Row + .760 [19.30]  
 B = .100 [2.54] x No. of Spaces  
 C = .100 [2.54] x No. of Positions per Row + .185 [4.70]

UNLESS OTHERWISE SPECIFIED  
 ALL DIMENSIONS ARE INCHES [MM]  
 TOLERANCES: EXCEPT AS NOTED

INCHES	HOLES
.X ± .10	ØXX ± .10
.XX ± .020	ØXXX ± .015
.XXX ± .015	ØXXXX ± .010

DRAWN		SS	9/11/06	TITLE		.100 x .100 IDC LATCH HEADER	
CHECKED				PART NO.		MHF-XX-SGL	
APPROVED				REF:	S00087T	SCALE:	NIS

**ADAM TECH**  
 909 Railway Avenue, Union, NJ 07083  
 Phone: 908-687-5000 Fax: 908-687-5710

REV. A