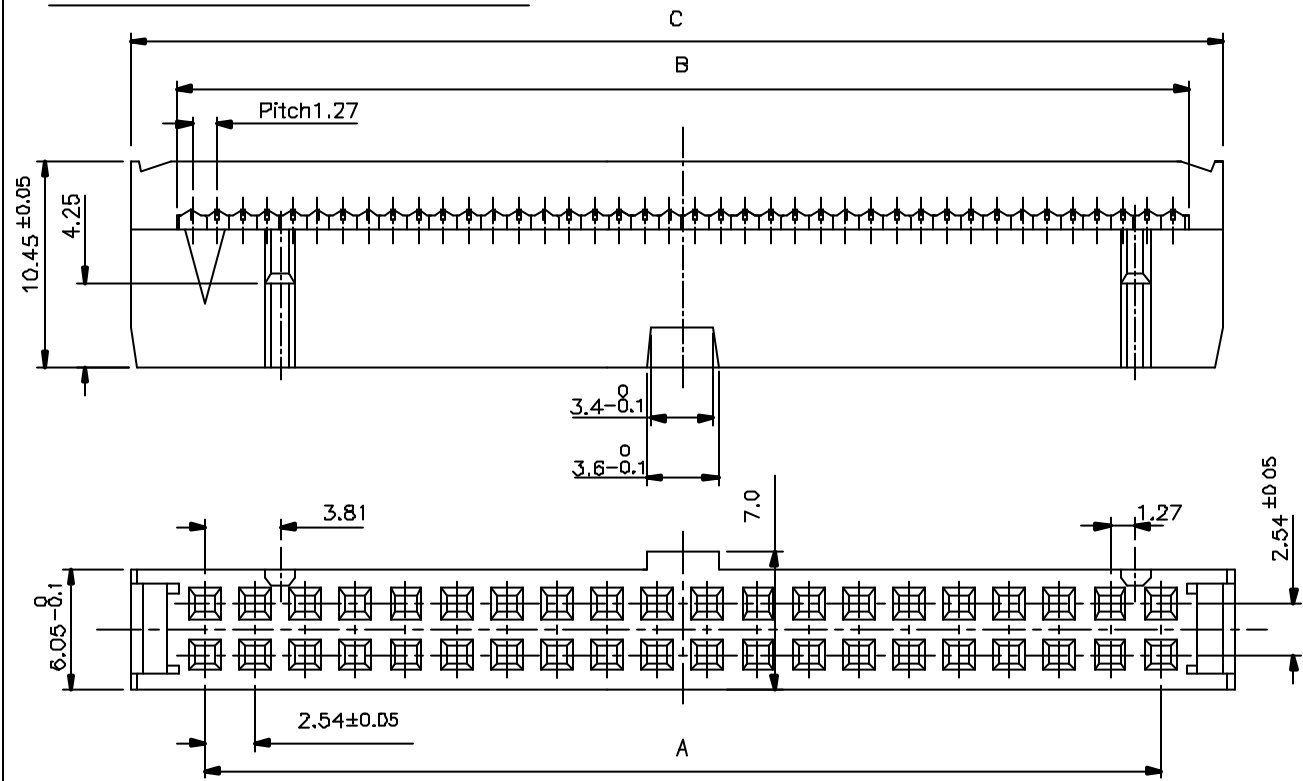
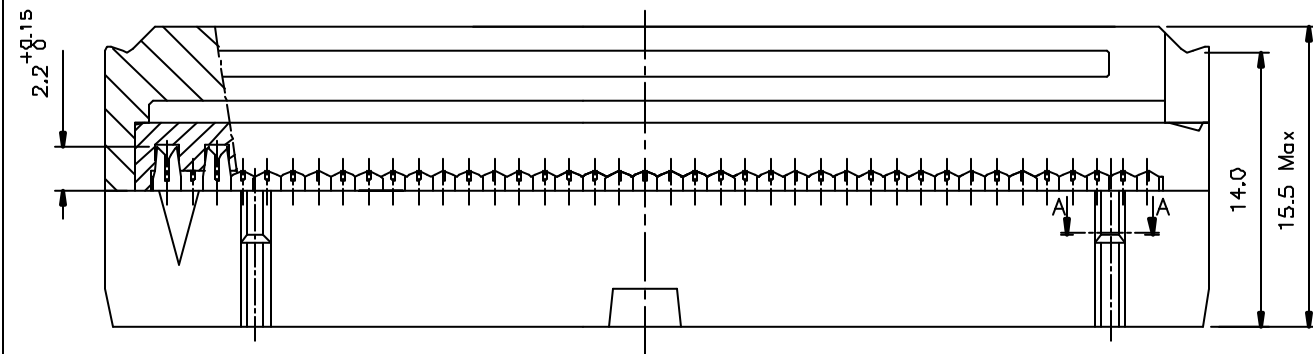


THIS DRAWING IS THE PROPERTY OF FRAMATOME CONNECTORS OEN LTD. IT MUST NOT BE REPRODUCED DISCLOSED TO ANY THIRD PARTIES OR USED FOR MANUFACTURING PURPOSES WITHOUT PERMISSION IN WRITING FROM M/S FRAMATOME CONNECTORS OEN LTD. KKOCHI 682 314.

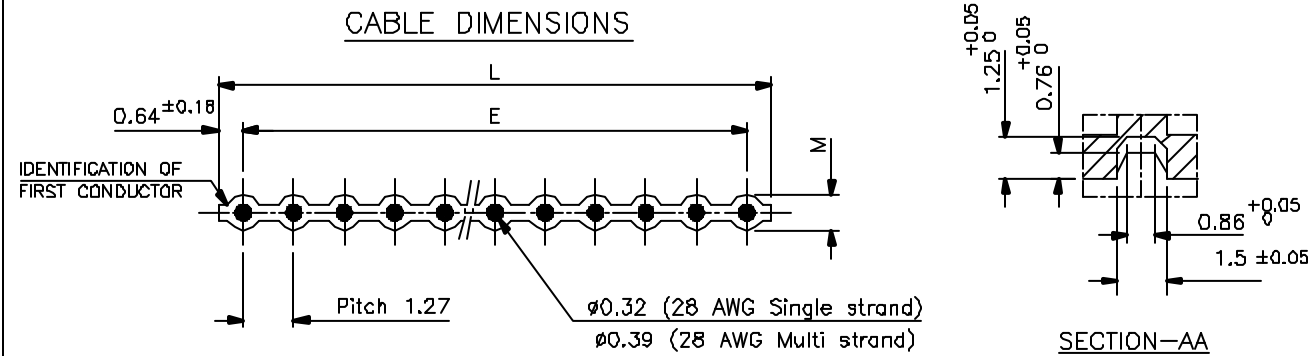
WITHOUT STRAIN RELIEF CLAMP



WITH STRAIN RELIEF CLAMP



CABLE DIMENSIONS



Number of contacts	64	78.74	81.58	86.08	80.01	81.28	0.89
	60	73.66	76.50	81.00	74.93	76.20	0.89
	50	60.96	63.80	68.30	62.23	63.50	0.89
	40	48.26	51.10	55.60	49.53	50.80	0.89
		A ±0.05	B ±0.1	C ±0.1	E ±0.2	L ±0.32	M ±0.13
		Dimensions					

ORDERING INFORMATION

8613 0 4 0 3 0 3 0 3 5 5

SERIES: 8613
 NO. OF CONTACTS :- 40, 50, 60, 84
 3 - FEMALE WITH CENTRAL POLARISING
 0 - WITHOUT STRAIN RELIEF CLAMP
 1 - WITH STRAIN RELIEF CLAMP
 TYPE OF TERMINATION
 30 - INSULATION DISPLACEMENT 28 GAUGE

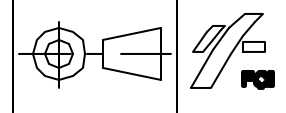
SPECIAL CODE
 LONGITUDINAL PITCH
 5 - 2.54 mm
 PLATING
 4 - 0.2 μm Au
 5 - 0.4 μm Au
 6 - 0.8 μm Au
 8 - 1.27 μm Au
 INSULATOR MATERIAL
 3 - PBT GREY

TECHNICAL SPECIFICATION

INSULATOR MATERIAL	: POLYESTER THERMOPLASTIC UL 94V0
COLOUR	: GREY
CONTACT MATERIAL	: COPPER ALLOY
PLATING	: GOLD OVER NICKEL -ACTIVE ZONE : TIN LEAD OVER NICKEL -TERMINATION ZONE
CURRENT RATING	: 1.5A AT 25°C
INSULATION RESISTANCE AT 500Vdc	: ≥5000 M Ω
CONTACT RESISTANCE	: ≤20 m Ω
DIELECTRIC WITHSTANDING VOLTAGE	: 1050 V eff.
OPERATING TEMPERATURE	: -55°C TO +125°C

ALL DIMENSIONS ARE IN MM DO NOT SCALE DRAWING GEN TOLERANCE LINEAR ±0.1 ANGULAR ±1°	TITLE FEMALE CONNECTOR (FLAT CABLE 8613 SERIES)	DRN YMP
	MATERIAL SEE SPEC.	CHD SOJI.C.A
SCALE	REF. 8613	APPD P S.Johns
		DATE 6/12/98
		DRG:NO: C/8613/0023
		SHEET 1 OF 1

b	22/04/2002	10,14,16,20,26 & 34 POSITIONS & NOTE-1,2 REMOVED AND ORDERING INFORMATION & DIMENSION TABLE MODIFIED.		
INDEX	DATE	REVISION DESCRIPTION	CHD BY	APPD



FRAMATOME CONNECTORS OEN LTD.
INDIA

THIS DRAWING WHEN ISSUED THROUGH EDP, IT IS VALID WITHOUT SIGNATURE