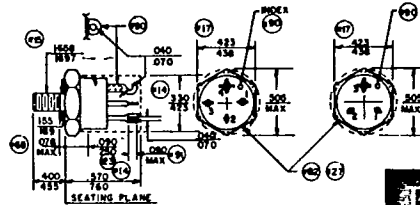


Hi-Rel PLANAR POWER — 5 AMP PNP



TO111

FOR DETAILED SPECIFICATIONS CONTACT ENGINEERING

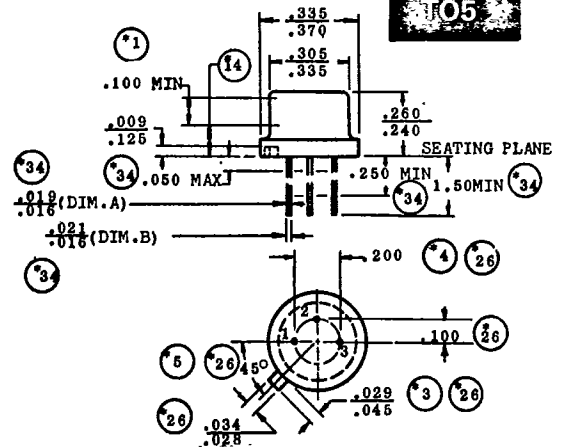
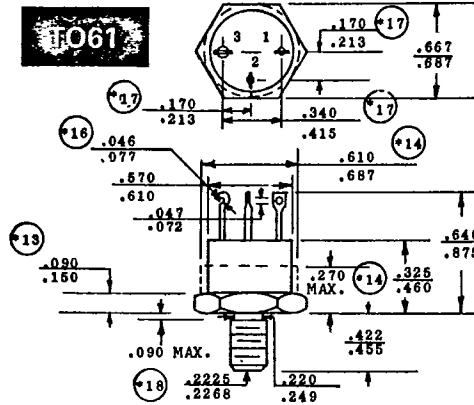
TYPE	CASE	Breakdown Voltages		V_{EB}	V_{CE}	I_{CA}	h_{FE}		Cutoff Current V_{CB}	(uA)
		V_{CB}	V_{CE}				Min.	Max.		
2N3202	TO-5	-40	-40	-10	-2	-1.0	20	60	-30	-75
2N3203	TO-5	-60	-60	-10	-2	-1.0	20	60	-40	-75
2N3204	TO-5	-80	-80	-10	-2	-1.0	20	60	-60	-75
2N3719	TO-5	-40	-40	-4	-1	-1.0	25	180	-30	-10
2N3720	TO-5	-60	-60	-4	-1	-1.0	25	180	-40	-10
2N3775	TO-5	-60	-60	-8	-2	-0.2	20	60	-60	-500
2N3776	TO-5	-80	-80	-8	-2	-0.2	20	60	-80	-500
2N3777	TO-5	-100	-100	-8	-2	-0.2	20	60	-100	-500
2N3778	TO-5	-40	-40	-8	-2	-0.2	10	40	-40	-500
2N3867	TO-5	-40	-40	-4	-3	-2.5	25		-40	-150
2N3868	TO-5	-60	-60	-4	-3	-2.5	20		-60	-150
2N4901	TO-3	-40	-40	-5	-2	-1.0	20	80	-30	-100
2N4902	TO-3	-60	-60	-5	-2	-1.0	20	80	-40	-100
2N4903	TO-3	-80	-80	-5	-2	-1.0	20	80	-60	-100
2N4904	TO-3	-40	-40	-5	-2	-2.5	25	100	-30	-100
2N4905	TO-3	-60	-60	-5	-2	-2.5	25	100	-40	-100
2N4906	TO-3	-80	-80	-5	-2	-2.5	25	100	-60	-100
2N4907	TO-3	-40	-40	-5	-4	-4.0	20	80	-30	-2mA
2N4908	TO-3	-60	-60	-5	-4	-4.0	20	80	-40	-2mA
2N4909	TO-3	-80	-80	-5	-4	-4.0	20	80	-60	-2mA
2N4999	TO-111	-100	-80	-5	-5	-1.0	30	90	-100	-1mA
2N5001	TO-59	-100	-80	-5	-5	-1.0	70	200	-100	-1mA
2N5003	TO-59	-100	-80	-5	-5	-2.5	30	90	-100	-1mA
2N5005	TO-59	-100	-80	-5	-5	-2.5	70	200	-100	-1mA
2N5147	TO-5	-100	-80	-5	-5	-1.0	30	90	-100	-1mA
2N5149	TO-5	-100	-80	-5	-5	-1.0	70	120	-100	-1mA
2N5151	TO-39	-100	-80	-5	-5	-2.5	30	90	-100	-1mA
2N5153	TO-39	-100	-80	-5	-5	-2.5	70	200	-100	-1mA
2N5286	TO-59	-100	-100	-5	-5	-2.5	30	90	-100	-1mA
2N5287	TO-59	-100	-100	-5	-5	-2.5	70	200	-100	-1mA
2N5333	TO-5	-100	-80	-6	-4	-1.0	30	120	-100	-10
2N5384	TO-111	-100	-80	-6	-4	-2.0	20	80	-100	-10
2N5385	TO-111	-100	-80	-6	-4	-2.0	20	80	-100	-10
2N5597	TO-66	-80	-60	-5	-5	-1.0	70	200	-80	-1mA
2N5599	TO-66	-100	-80	-5	-5	-1.0	30	90	-100	-1mA
2N5601	TO-66	-100	-80	-5	-5	-1.0	70	200	-100	-1mA
2N5603	TO-66	-120	-100	-5	-5	-1.0	30	90	-120	-1mA
2N5605	TO-66	-80	-60	-5	-5	-2.5	70	200	-80	-1mA
2N5607	TO-66	-100	-80	-5	-5	-2.5	30	90	-100	-1mA
2N5609	TO-66	-100	-80	-5	-5	-2.5	70	200	-100	-1mA
2N5611	TO-66	-120	-100	-5	-5	-2.5	30	90	-120	-1mA

SPPWE-9X



Hi-Rel PLANAR POWER — 5 AMP PNP

- TO-3
60W@T_C=100°C
- TO-5
4W@T_C=100°C
- TO-61
40W@T_C=100°C
- TO-66
30W@T_C=100°C
- TO-111
30W@T_C=100°C



FOR DETAILED SPECIFICATIONS CONTACT ENGINEERING

TYPE	CASE	Breakdown Voltages		h _{FE}					Cutoff Current	
		V _{CB}	V _{CE}	V _{EB}	V _{CE}	I _C A	Min.	Max.	V _{CB}	(uA)
2N3021	TO-3	-30	-30	-4	-2	-1	20	60	-20	-200
2N3022	TO-3	-45	-45	-4	-2	-1	20	60	-30	-200
2N3023	TO-3	-60	-60	-4	-2	-1	20	60	-40	-200
2N3024	TO-3	-30	-30	-4	-2	-1	50	180	-20	-200
2N3025	TO-3	-45	-45	-4	-2	-1	50	180	-30	-200
2N3026	TO-3	-60	-60	-4	-2	-1	50	180	-40	-200
2N3163	TO-61	-40	-40	-10	-3	-1	12	36	-40	-10mA
2N3164	TO-61	-60	-60	-10	-3	-1	12	36	-60	-10mA
2N3165	TO-61	-80	-80	-10	-3	-1	12	36	-80	-10mA
2N3166	TO-61	-100	-100	-10	-3	-1	12	36	-100	-10mA
2N3171	TO-3	-40	-40	-10	-3	-1	12	36	-30	-10mA
2N3172	TO-3	-60	-60	-10	-3	-1	12	36	-40	-10mA
2N3173	TO-3	-80	-80	-10	-3	-1	12	36	-60	-10mA
2N3174	TO-3	-100	-100	-10	-3	-1	12	36	-80	-10mA
2N3175	TO-61	-40	-40	-10	-3	-2	10	30	-40	-10mA
2N3176	TO-61	-60	-60	-10	-3	-2	10	30	-60	-10mA
2N3177	TO-61	-80	-80	-10	-3	-2	10	30	-80	-10mA
2N3178	TO-61	-100	-100	-10	-3	-2	10	30	-100	-10mA
2N3183	TO-3	-40	-40	-10	-3	-2	10	30	-30	-10mA
2N3184	TO-3	-60	-60	-10	-3	-2	10	30	-40	-10mA
2N3185	TO-3	-80	-80	-10	-3	-2	10	30	-60	-10mA
2N3186	TO-3	-100	-100	-10	-3	-2	10	30	-80	-10mA
2N3187	TO-61	-40	-40	-10	-3	-2	10	30	-40	-10mA
2N3188	TO-61	-60	-60	-10	-3	-2	10	30	-60	-10mA
2N3189	TO-61	-80	-80	-10	-3	-2	10	30	-80	-10mA
2N3190	TO-61	-100	-100	-10	-3	-2	10	30	-100	-10mA
2N3195	TO-3	-40	-40	-10	-3	-3	10	30	-30	-10mA
2N3196	TO-3	-60	-60	-10	-3	-3	10	30	-40	-10mA
2N3197	TO-3	-80	-80	-10	-3	-3	10	30	-60	-10mA
2N3198	TO-3	-100	-100	-10	-3	-3	10	30	-80	-10mA