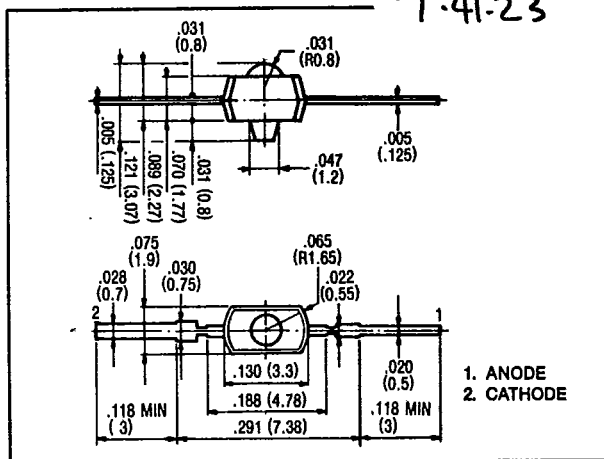


AXIAL LEADED LED LAMPS

FEATURES

- Provides excellent point source.
- Available in water clear or tinted clear epoxy.
- All plastic mold.



MAXIMUM RATINGS (Ta = 25°C)

PART NO.	FORWARD CURRENT (If) (mA)	REVERSE VOLTAGE (Vr) (V)	POWER DISSIPATION (Pd) (mW)	OPERATING TEMPERATURE (Topt) (°C)	STORAGE TEMPERATURE (Tstg) (°C)
MT210-R	15	4	60	-20 ~ 75	-30 ~ 80
MT220-R	15	4	60	-20 ~ 75	-30 ~ 80
MT210-G	20	4	60	-20 ~ 75	-30 ~ 80
MT220-G	20	4	60	-20 ~ 75	-30 ~ 80

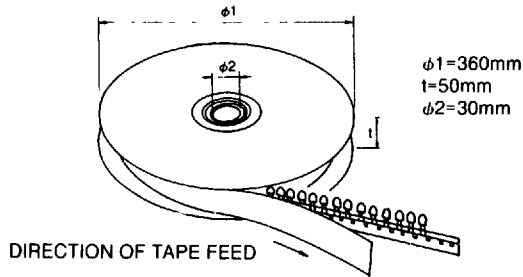
OPTO-ELECTRICAL CHARACTERISTICS (Ta = 25°C)

PART NO.	MATERIAL	LENS COLOR	VIEWING ANGLE		LUMINOUS INTENSITY (mcd)			FORWARD VOLTAGE (v)			REVERSE CURRENT		PEAK WAVELENGTH (nm)	SPEC. LINE HALF WIDTH (nm)
			typ.	min.	typ.	@mA	typ.	max.	@ mA	µA	Vr			
MT210-R	GaP/GaP	Water/Clear	55°	.4	1.5	10	2.05	2.6	15	5	4	700	100	
MT220-R	GaP/GaP	Red/Clear	55°	.3	1.2	10	2.05	2.6	15	5	4	700	100	
MT210-G	GaP/GaP	Water/Clear	55°	.5	3.0	20	2.1	2.6	20	5	4	565	25	
MT220-G	GaP/GaP	Green/Clear	55°	.5	2.0	20	2.1	2.6	20	5	4	565	25	

APPLICATION NOTES

[4] Packaging Reel Packaging

a) Reel type



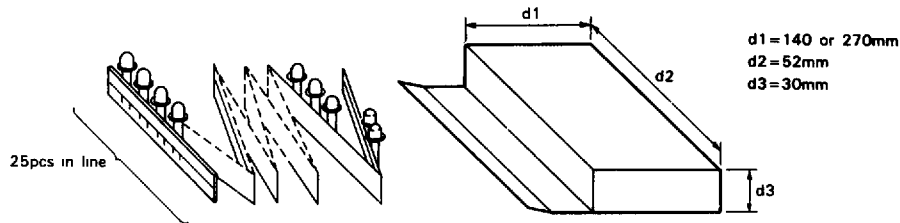
Content

LED Type	Quantity/Reel
$\phi 3$ Series	2000 pcs
$\phi 5$ Series	1000 pcs

T-1 and T- 1 3/4 packages

*Lamps with external shapes other than those above are also available. Please consult Marktech.

b) Zigzag wound tape



At tape beginning and end, there is additional space for 4 pcs or more

Content

LED Type	Quantity/Box
$\phi 3$ Series	2000 or 5000 pcs
$\phi 5$ Series	1000 or 2000 pcs



marktech

5 Hemlock Street • Latham, New York • (518) 786-6591 • FAX (518) 786-6599