

# HIGH DENSITY STRAIGHT D-SUB ORDERING CODE

PDI-15 S HS-S W-H

NUMBER OF PINS =15  
 =26  
 =44  
 =62

GENDER MALE =S  
 FEMALE =R

TERMINATION TYPE P.C. PINS =BLANK  
 SOLDER CUP =S  
 EXTENDED P.C. PINS =E

INSULATOR COLOR BLACK = BLANK  
 WHITE =W

MATING FACE 2.5mm HEX RIVET = BLANK  
 3.8mm RIVET ATTACHED IN BACK =A  
 5.8mm RIVET ATTACHED IN BACK =D  
 5.8mm BOARD LOCK =G  
 HOLE =H  
 5.8mm RIVET ATTACHED IN FRONT =K  
 4-40 THREADED RIVET & JACK SCREW (UNASSEMBLED) =P  
 4-40 THREADED RIVET & JACK SCREW =R  
 11.9mm BOARD LOCK =U

GOLD PLATING (XX IS GOLD IN MICRO INCHES) =GXX  
 GOLD FLASH (STANDARD) =BLANK

6

5

4

3

2

1

**MATERIAL AND FINISH**

Insulator: PBT & Glass filled reinforced, UL 94V-0 rated.  
Shell: Steel, Tin plated.  
Contacts: Brass, Gold plated over Nickel.

POSITION	A	B	C	D	E	F	G
15	16.3	25.0	30.8	19.3	0.25	0.89	2.29
26	24.6	33.3	39.1	27.5	0.51	0.64	2.29
44	38.3	47.1	53.0	41.3	0.51	0.64	2.29
62	54.8	63.5	69.3	57.7	0.58	0.62	2.41

**ELECTRICAL SPECIFICATIONS:**

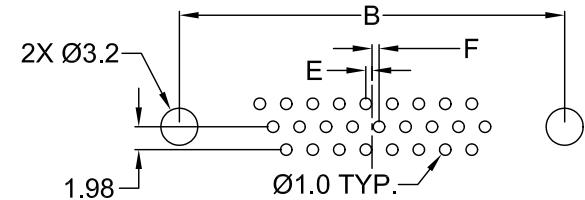
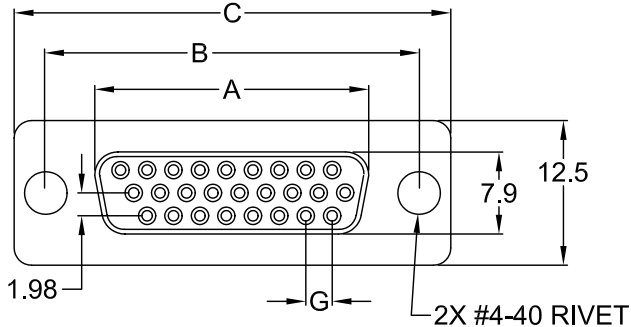
Rated current: 2A  
Rated voltage: 250VDC  
Contact resistance: 15 mohm max.  
Insulation resistance: 1000 Mohm @ 500VDC  
Dielectric withstanding voltage: 1000VAC for 1 minute.

**ENVIRONMENTAL:**

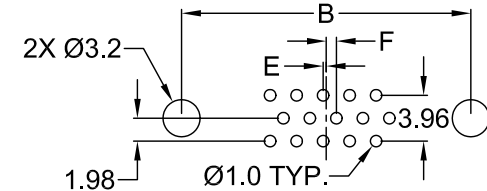
Operating temperature: -55°C ~ 105°C

**NOTES:**

Replace the first XX in P/N with number of positions.

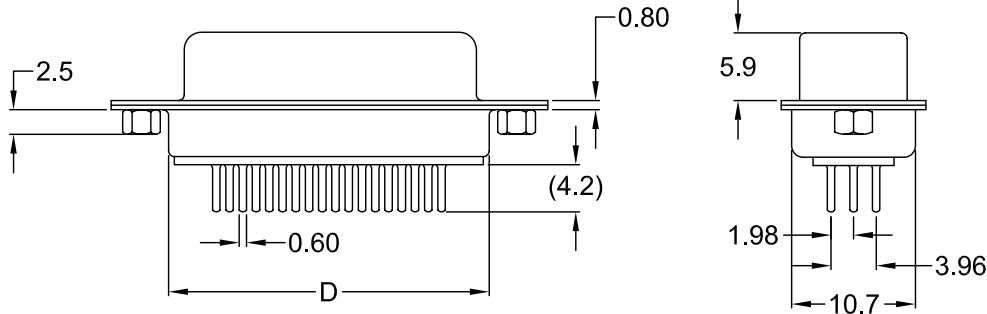


26, 44, 62 POSITION FEMALE



15 POSITION FEMALE

RECOMMENDED PCB LAYOUT (TOP VIEW)



-X-XX: SEE ORDERING CODE FOR OPTIONS

REV	DATE	CHANGE	CHKG	CHKD	APPR

TOLERANCE UNLESS OTHERWISE SPECIFIED	
X	± 1
X.X	± 0.4
X.XX	± 0.20
DRAWN BY	DF
CHECK BY	
APPR BY	
DATE:	2/9/06
DATE:	
DATE:	

**Power Dynamics, Inc.**  
Phone: 973 560-0019 Whippany, New Jersey Fax: 973 560-0076

PART: HI-DENSITY STRAIGHT FEMALE D-SUB  
PC PINS, 2.5mm HEX RIVET

PART #: **PDI-XXRHS-X-XX**

SIZE: A  
SCALE: NTS

ALL DIMENSIONS FOR REFERENCE ONLY  
DIMENSIONS ARE IN MILLIMETERS

SHEET 1 of 1  
REV:

6

5

4

3

2

1

6

5

4

3

2

1

**MATERIAL AND FINISH**

Insulator: PBT & Glass filled reinforced,  
UL 94V-0 rated.

Shell: Steel, Tin plated.

Contacts: Brass, Gold plated over Nickel.

**ELECTRICAL SPECIFICATIONS:**

Rated current: 2A

Rated voltage: 250VDC

Contact resistance: 15 mohm max.

Insulation resistance: 1000 Mohm @  
500VDC

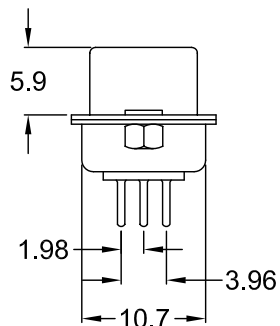
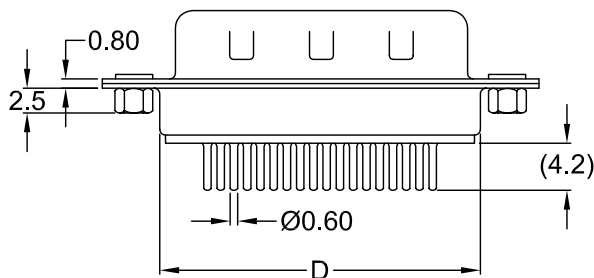
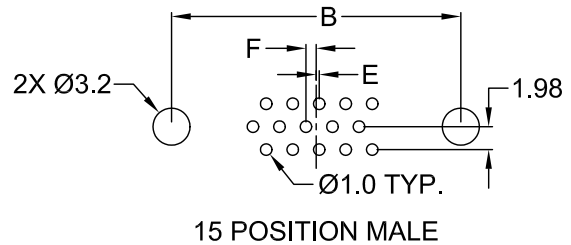
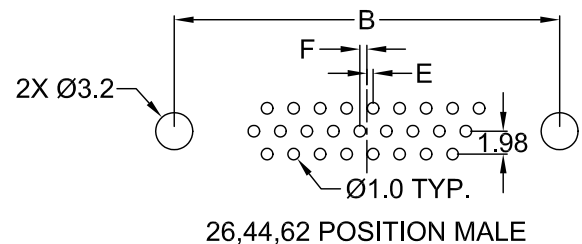
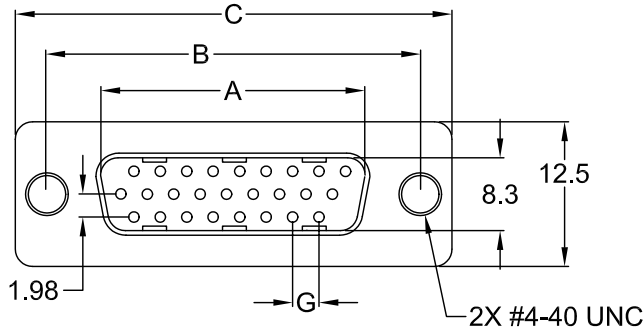
Dielectric withstanding voltage: 1000VAC  
for 1 minute.

**ENVIRONMENTAL:**

Operating temperature: -55°C ~ 105°C

NOTE: Replace first XX in part number  
with number of positions.

POSITION	A	B	C	D	E	F	G
15	16.9	25.0	30.8	19.3	0.25	0.89	2.29
26	25.2	33.3	39.1	27.5	0.51	0.64	2.29
44	38.9	47.1	53.0	41.3	0.51	0.64	2.29
62	55.4	63.5	69.3	57.7	0.58	0.62	2.41



-X-XX: SEE ORDERING CODE FOR OPTIONS

REVISIONS	CHNG	CHK	APPR
	CHANGE		
	REV	DATE	

TOLERANCE UNLESS OTHERWISE SPECIFIED			
X	± 1		
X.X	± 0.4		
X.XX	± 0.20		
DRAWN BY	DF	DATE:	2/9/06
CHECK BY		DATE:	
APPR BY		DATE:	

**Power Dynamics, Inc.**

Phone: 973 560-0019 Whippany, New Jersey Fax: 973 560-0076

PART: HI-DENSITY STRAIGHT MALE D-SUB  
PC PINS, 2.5mm HEX RIVET

PART #: PDI-XXSHS-X-XX

SHEET 1 of 1

SIZE: A  
SCALE: NTS  
ALL DIMENSIONS FOR REFERENCE ONLY  
DIMENSIONS ARE IN MILLIMETERS

REV:

6

5

4

3

2

1

6

5

4

3

2

1

**MATERIAL AND FINISH:**

Insulator: PBT & Glass filled reinforced, UL 94V-0 rated.  
Shell: Steel, Tin plated.  
Contacts: Brass, gold plated over Nickel.

POSITION	A	B	C	D	E	F
15	16.3	25.0	30.8	2.29	1.14	19.2
26	24.6	33.3	39.2	2.29	1.14	27.7
44	38.3	47.1	53.1	2.29	1.14	41.1
62	54.8	63.5	69.4	2.41	1.20	57.3

**ELECTRICAL SPECIFICATIONS:**

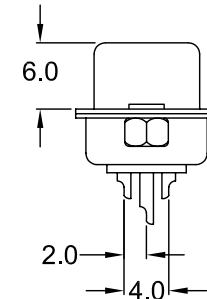
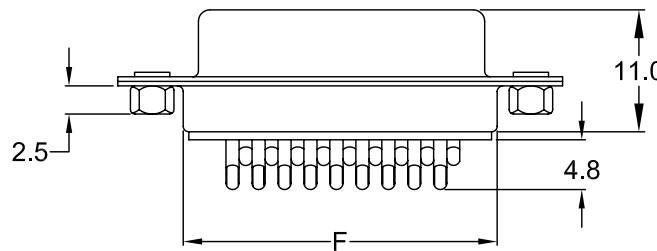
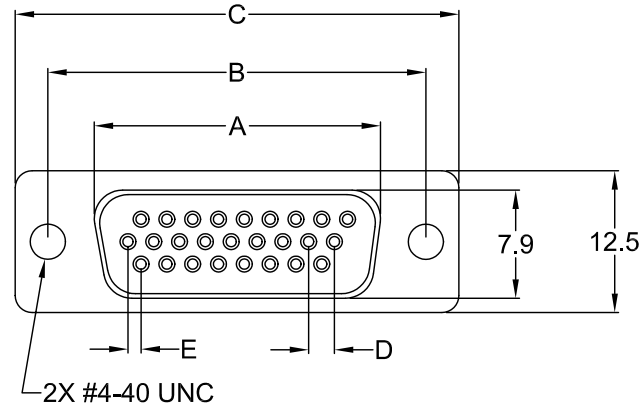
Rated current: 3A  
Rated voltage: 250VDC  
Contact resistance: 15 mohm  
Insulation resistance: 3000 Mohm @ 500VDC  
Dielectric withstanding voltage: 1000VAC / 1 MIN.

**OPERATING TEMPERATURE:**

-55°C to +105°C

**NOTES:**

Replace first XX in P/N with number of positions.



-X-XX: SEE ORDERING CODE FOR OPTIONS

REVISIONS	CHNG	CHK	APPR
REV	DATE	CHANGE	

TOLERANCE UNLESS OTHERWISE SPECIFIED	
X	± 1
X.X	± 0.4
X.XX	± 0.20
DRAWN BY	DF
DATE:	2/10/06
CHECK BY	
DATE:	
APPR BY	
DATE:	

**Power Dynamics, Inc.**  
Phone: 973 560-0019 Whippany, New Jersey Fax: 973 560-0076

PART: HI-DENSITY STRAIGHT FEMALE D-SUB  
SOLDER CUP, 2.5mm HEX RIVET

PART #: PDI-XXRHS-SX-XX

SIZE: A

SCALE: NTS

ALL DIMENSIONS FOR REFERENCE ONLY  
DIMENSIONS ARE IN MILLIMETERS

SHEET 1 of 1

REV:

6

5

4

3

2

1

6

5

4

3

2

1

**MATERIAL AND FINISH:**

Insulator: PBT & Glass fiber reinforced, UL 94V-0 rated.  
Shell: Steel, Tin plated.  
Contacts: Brass, gold plated over Nickel.

POSITION	A	B	C	D	E	F
15	16.9	25.0	30.8	2.29	1.14	19.2
26	25.2	33.3	39.2	2.29	1.14	27.7
44	38.9	47.1	53.1	2.29	1.14	41.1
62	55.4	63.5	69.4	2.41	1.20	57.3

**ELECTRICAL SPECIFICATIONS:**

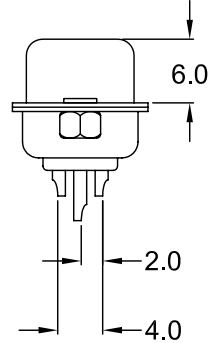
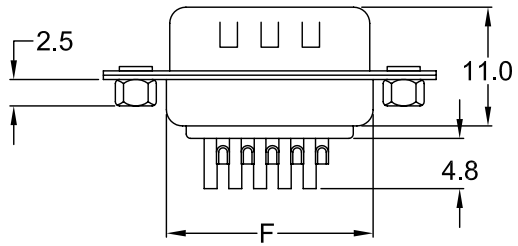
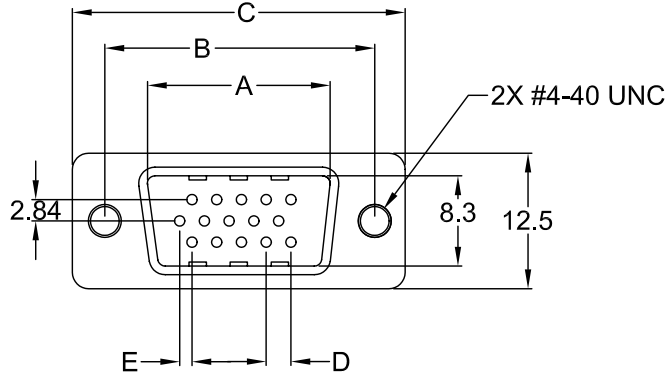
Rated current: 5A  
Rated voltage: 250VDC  
Contact resistance: 13 mohm  
Insulation resistance: 1000 Mohm @ 500VDC  
Dielectric withstanding voltage: 1250VAC / 1 MIN.

**OPERATING TEMPERATURE:**

-55°C to +105°C

**NOTES:**

Replace first XX in P/N with number of positions.



-X-XX: SEE ORDERING CODE FOR OPTIONS

REVISIONS	CHNG	CHECK	APPR
	DATE	CHANGE	
	REV	DATE	

TOLERANCE UNLESS OTHERWISE SPECIFIED	
X	± 1
X.X	± 0.4
X.XX	± 0.20
DRAWN BY	DF
CHECK BY	DATE: 2/10/06
APPR BY	DATE:

**Power Dynamics, Inc.**  
Phone: 973 560-0019 Whippany, New Jersey Fax: 973 560-0076

**PART: HI-DENSITY STRAIGHT MALE D-SUB  
SOLDER CUP, 2.5mm HEX RIVET**

**PDI-XXSHS-SX-XX** SHEET 1 of 1

SCALE: NTS ALL DIMENSIONS FOR REFERENCE ONLY  
DIMENSIONS ARE IN MILLIMETERS

6

5

4

3

2

1

**MATERIAL AND FINISH**

Insulator: PBT, UL 94V-0 rated.  
 Shell: Steel, Tin plated.  
 Contacts: Brass, Gold plated over Nickel.

**ELECTRICAL SPECIFICATIONS:**

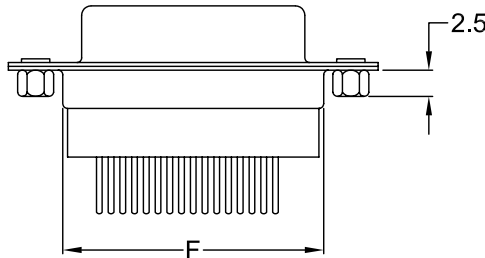
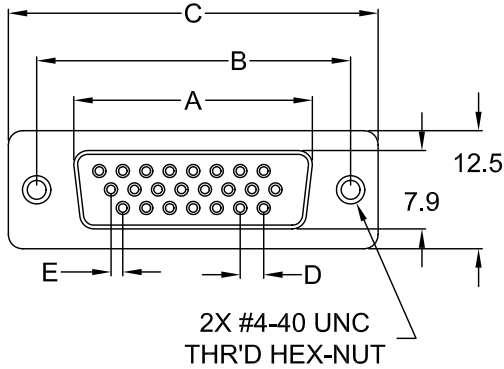
Rated current: 3A max.  
 Rated voltage: 250VAC max.  
 Contact resistance: 15 mohm max.  
 Insulation resistance: 3000 Mohm @ 500VDC  
 Dielectric withstanding voltage: 1000VAC for 1 minute.

**ENVIRONMENTAL:**

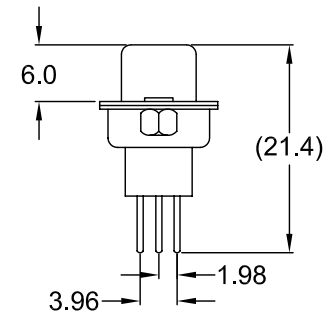
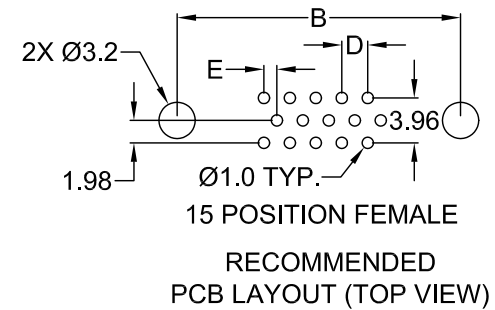
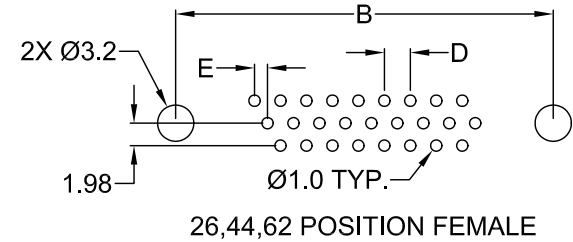
Operating temperature: -55°C ~ 105°C

**NOTES:**

Replace the first XX in P/N with number of positions.



POSITION	A	B	C	D	E	F
15	16.3	25.0	30.8	2.29	1.14	19.2
26	24.6	33.3	39.2	2.29	1.14	27.7
44	38.3	47.1	53.1	2.29	1.14	41.1
62	54.8	63.5	69.4	2.41	1.20	57.3



-X-XX: SEE ORDERING CODE FOR OPTIONS

TOLERANCE  
 UNLESS OTHERWISE SPECIFIED

X ± 1  
 X.X ± 0.4  
 X.XX ± 0.20

**Power Dynamics, Inc.**

Phone: 973 560-0019 Whippany, New Jersey Fax: 973 560-0076

PART: HI-DENSITY STRAIGHT FEMALE D-SUB  
 EXTENDED PC PINS, 2.5mm HEX RIVET

DRAWN BY	DF	DATE:	2/10/06
CHECK BY		DATE:	
APPR BY		DATE:	

PART #:	<b>PDI-XXRHS-EX-XX</b>	SHEET	1 of 1
SIZE:	A	ALL DIMENSIONS FOR REFERENCE ONLY	
SCALE:	NTS	DIMENSIONS ARE IN MILLIMETERS	REV:

REVISIONS	CHNG	CHK	APPR
REV	DATE	CHANGE	

**MATERIAL AND FINISH**

Insulator: PBT, UL 94V-0 rated.  
 Shell: Steel, Tin plated.  
 Contacts: Brass, Gold plated over Nickel.

**ELECTRICAL SPECIFICATIONS:**

Rated current: 3A max.  
 Rated voltage: 250VAC max.  
 Contact resistance: 15 mohm max.  
 Insulation resistance: 3000 Mohm @ 500VDC  
 Dielectric withstanding voltage: 1000VAC for 1 minute.

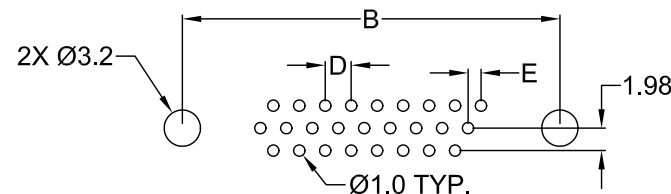
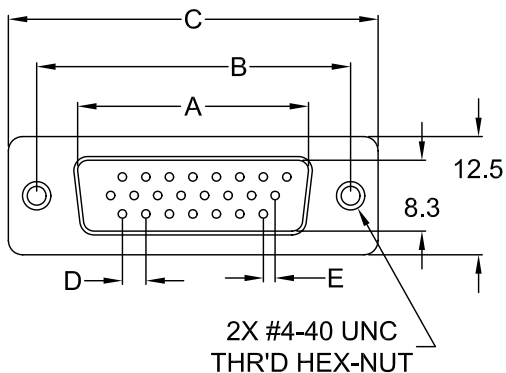
**ENVIRONMENTAL:**

Operating temperature: -55°C ~ 105°C

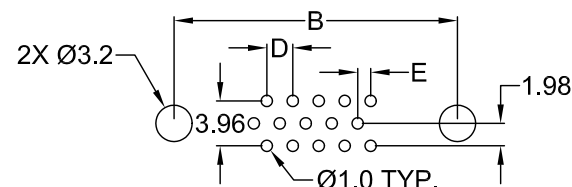
**NOTES:**

Replace the first XX in P/N with number of positions.

POSITION	A	B	C	D	E	F
15	16.9	25.0	30.8	2.29	1.14	19.2
26	25.2	33.3	39.2	2.29	1.14	27.7
44	38.9	47.1	53.1	2.29	1.14	41.1
62	55.4	63.5	69.4	2.41	1.20	57.3

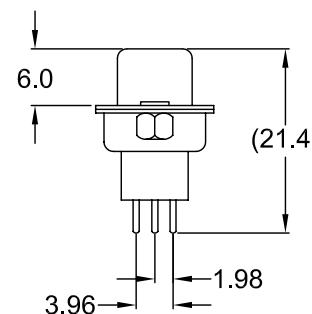
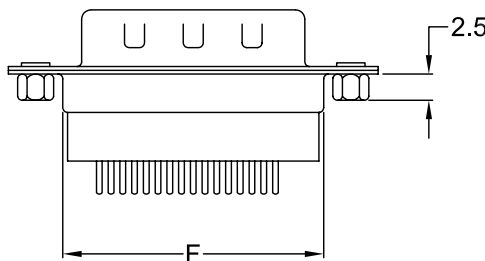


26,44,62 POSITION MALE



15 POSITION MALE

RECOMMENDED PCB LAYOUT (TOP VIEW)



-X-XX: SEE ORDERING CODE FOR OPTIONS

TOLERANCE UNLESS OTHERWISE SPECIFIED	
X	± 1
X.X	± 0.4
X.XX	± 0.20

DRAWN BY	DF	DATE:	2/10/06
CHECK BY		DATE:	
APPR BY		DATE:	

**Power Dynamics, Inc.**  
 Phone: 973 560-0019 Whippany, New Jersey Fax: 973 560-0076

PART: HI-DENSITY STRAIGHT MALE D-SUB  
 EXTENDED PC PINS, 2.5mm HEX RIVET

PART #: PDI-XXSHS-EX-XX		SHEET 1 of 1
SIZE: A	ALL DIMENSIONS FOR REFERENCE ONLY DIMENSIONS ARE IN MILLIMETERS	
SCALE: NTS	REV:	

REVISIONS	CHNG	CHK	APPR
REV	DATE	CHANGE	