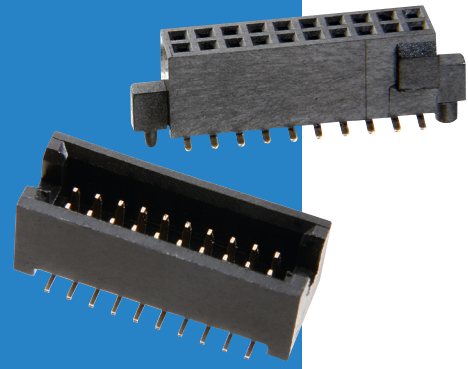


Archer Connectors – Polarized

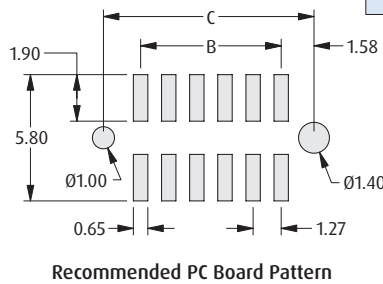
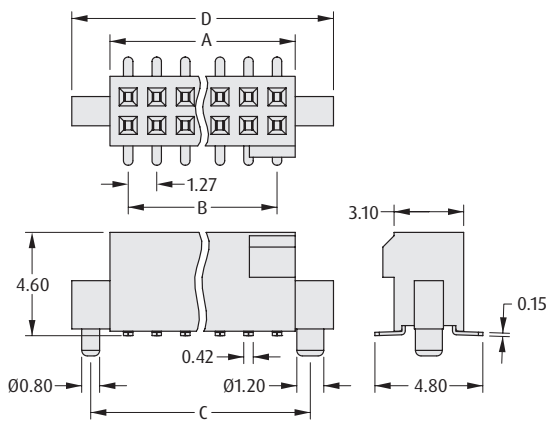
Vertical Surface Mount

- Mating connectors in Surface Mount format.
- Female connector is also suitable for use with male PC Tail connectors on the following page.
- Polarization to prevent mis-mating.
- Locating pegs of different sizes ensure correct orientation and positioning on the board.
- Shrouded for additional pin protection.



1.27mm (.050") PITCH

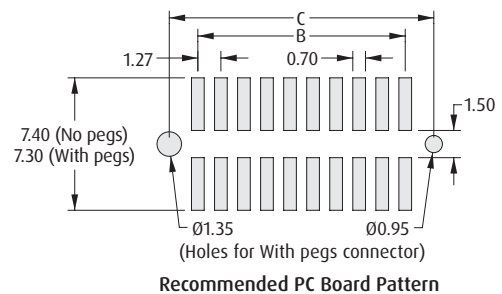
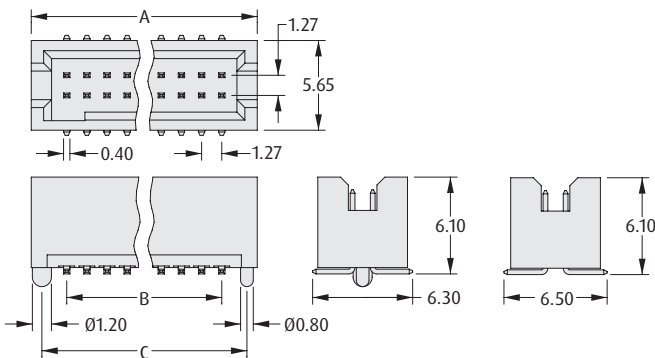
FEMALE



CALCULATION

A	$B + 1.62$
B	$1.27 \times (\text{No. of contacts per row} - 1)$
C	$B + 3.15$
D	$B + 5.02$

MALE



CALCULATION

A	$B + 4.47$
B	$1.27 \times (\text{No. of contacts per row} - 1)$
C	$B + 3.15$

HOW TO ORDER

M50 - 4XX XX 45 X

SERIES CODE

TYPE

430	Female
490	Male without pegs
491	Male with pegs

NO. OF CONTACTS PER ROW

05 to 08, 10, 12, 15, 19, 20, 25	Female
05, 07, 08, 10, 12, 14, 15, 20, 25	Male without pegs
05 to 08, 10, 12, 15, 20, 25	Male with pegs

PACKAGING

Blank	Loose
R	Tape & Reeled (check website for available sizes)

FINISH

45 Gold

All dimensions in mm.