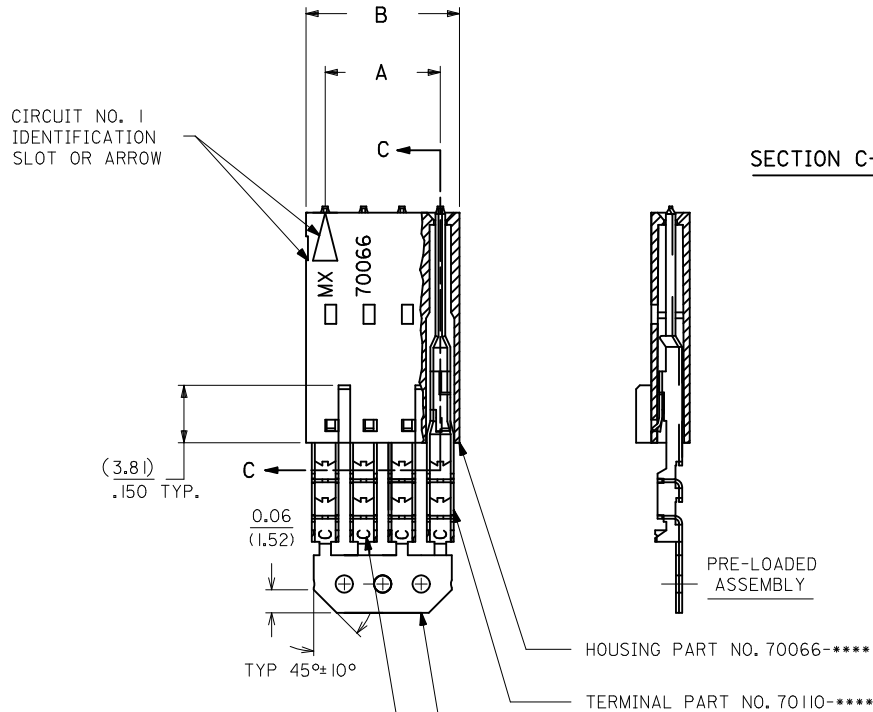
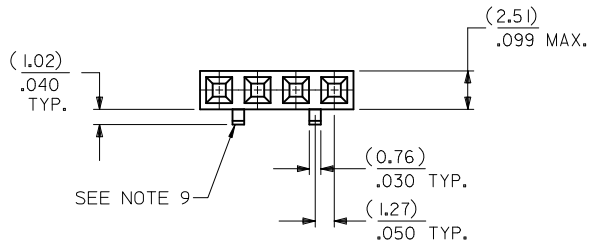
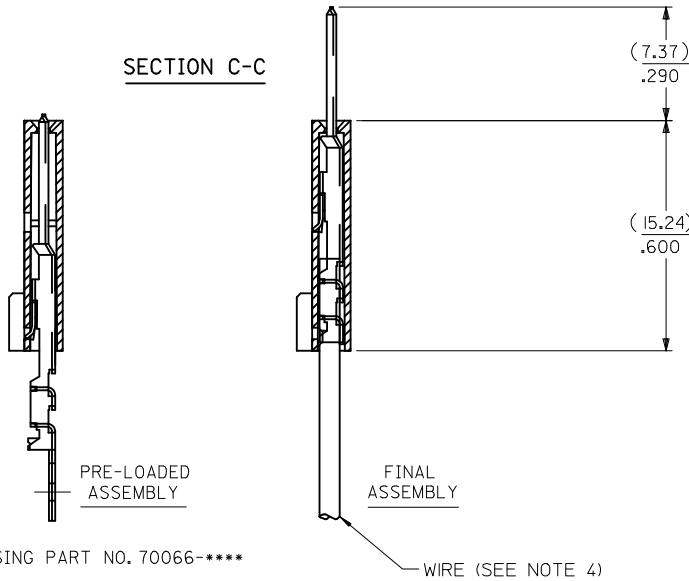


OPTION D

- NOTES:
- MATERIAL: HOUSING - G.F. POLYESTER, 94V-0
TERMINAL - PHOSPHOR BRONZE
 - FINISH: 0.76 MICROMETERS/30 MICROINCHES MINIMUM GOLD
IN SELECT AREA
1.91 MICROMETERS/75 MICROINCHES MINIMUM TIN
IN SELECT AREA
OVER NICKEL UNDERPLATE OVER-ALL.
 - PRODUCT SPECIFICATION: PS-70400
 - TO BE USED WITH 28 AWG. STANDARD WIRE WITH
1.35/053 DIAMETER MAXIMUM INSULATION.
 - SEE CHART FOR CIRCUIT SIZES.
 - STANDARD PACKAGING PER PK-70873-0001. OPTIONAL
PACKAGING MAY BE AVAILABLE. REQUEST DRAWING
PK-70475.
 - PARTS STACKABLE END TO END ON 2.54/100 CENTERS
 - SEE DRAWING SDA-70457-**** (SHEET 3) FOR OPTIONAL
HOUSING DETAILS.
 - 4 CIRCUIT SHOWN. 3-25 CIRCUITS HAVE 2 RIBS.
 - TO MATE WITH MOLEX PART NUMBERS: 70018-0000,
70022-****, 70104-****.
 - 2 CIRCUIT ASSEMBLIES SUPPLIED AS GROUPED PAIRS.



SECTION C-C



CKT. SIZE	A	B	EDP. NO.	ENG. NO.
2	(2.54) .100	(5.05) .199	14-44-4902	A-70475-1471
3	(5.08) .200	(7.59) .299	14-44-4903	A-70475-1472
4	(7.62) .300	(10.13) .399	14-44-4904	A-70475-1473
5	(10.16) .400	(12.67) .499	14-44-4905	A-70475-1474
6	(12.70) .500	(15.21) .599	14-44-4906	A-70475-1475
7	(15.24) .600	(17.75) .699	14-44-4907	A-70475-1476
8	(17.78) .700	(20.29) .799	14-44-4908	A-70475-1477
9	(20.32) .800	(22.83) .899	14-44-4909	A-70475-1478
10	(22.86) .900	(25.37) .999	14-44-4910	A-70475-1479
11	(25.54) 1.000	(27.91) 1.099	14-44-4911	A-70475-1480
12	(27.94) 1.100	(30.45) 1.199	14-44-4912	A-70475-1481
13	(30.48) 1.200	(32.99) 1.299	14-44-4913	A-70475-1482
14	(33.02) 1.300	(35.53) 1.399	14-44-4914	A-70475-1483
15	(35.56) 1.400	(38.07) 1.499	14-44-4915	A-70475-1484
16	(38.01) 1.500	(40.61) 1.599	14-44-4916	A-70475-1485
17	(40.64) 1.600	(43.15) 1.699	14-44-4917	A-70475-1486
18	(43.18) 1.700	(45.69) 1.799	14-44-4918	A-70475-1487
19	(45.72) 1.800	(48.23) 1.899	14-44-4919	A-70475-1488
20	(48.26) 1.900	(50.77) 1.999	14-44-4920	A-70475-1489
21	(50.80) 2.000	(53.31) 2.099	14-44-4921	A-70475-1490
22	(53.34) 2.100	(55.85) 2.199	14-44-4922	A-70475-1491
23	(55.88) 2.200	(58.39) 2.299	14-44-4923	A-70475-1492
24	(58.42) 2.300	(60.93) 2.399	14-44-4924	A-70475-1493
25	(60.96) 2.400	(63.47) 2.499	14-44-4925	A-70475-1494



I.D. SLOT CODE TO WIRE GAUGE CHART	
I.D. SLOT CODE	WIRE GAUGE
C	28 AWG.

PLATING CODE (STRIPE ON CARRIER STRIP)	
PLATING	COLOR
30 GOLD	RED

ADD GEN TOLERANCES	QUALITY SYMBOLS
EC NO: UCP2011-3892	▽=0
DRINKINS IBARRA 2011/06/27	▽=0
CHKD MORGAN	▽=0
APPR: MILLER 2011/07/07	

GENERAL TOLERANCES (UNLESS SPECIFIED)	
mm	INCH
4 PLACES ± .010	± .0004
3 PLACES ± .010	± .0004
2 PLACES ± 0.25	± .010
1 PLACE ± 0.35	± .014
ANGULAR ± 1/2°	

DIMENSION STYLE	
MM/IN	
DRAWN BY	DATE
WAZ	10/13/84
CHECKED BY	DATE
WAZ	10/13/84
APPROVED BY	DATE
RL	10/13/84

SCALE	DESIGN UNITS	THIRD ANGLE PROJECTION
4:1	INCH	☉
TITLE		
ASSEMBLY, SL CONNECTOR SINGLE ROW 2.54/100 GRID		
MOLEX MOLEX INCORPORATED		
MATERIAL NO.	DOCUMENT NO.	SHEET NO.
SEE TABLE	SDA-70475-1471-1494	1 OF 1