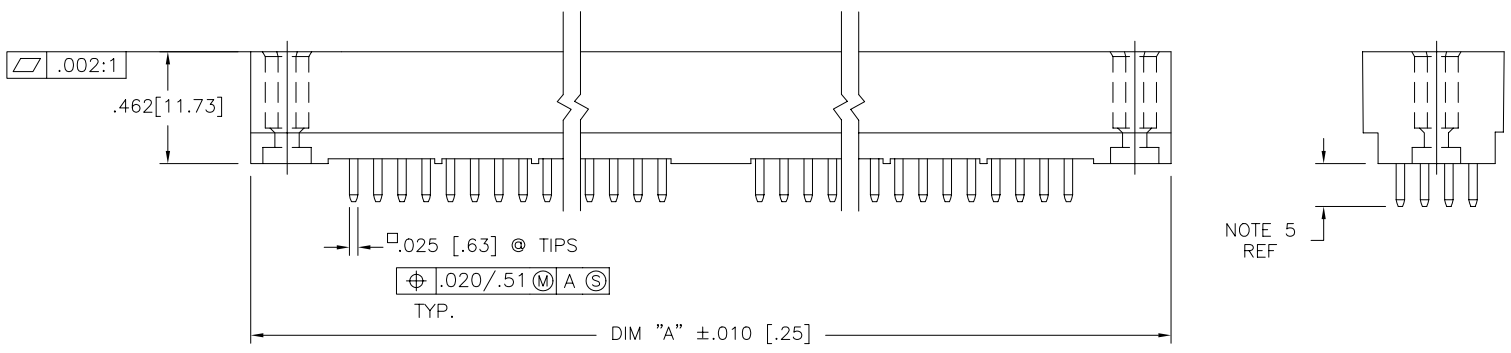
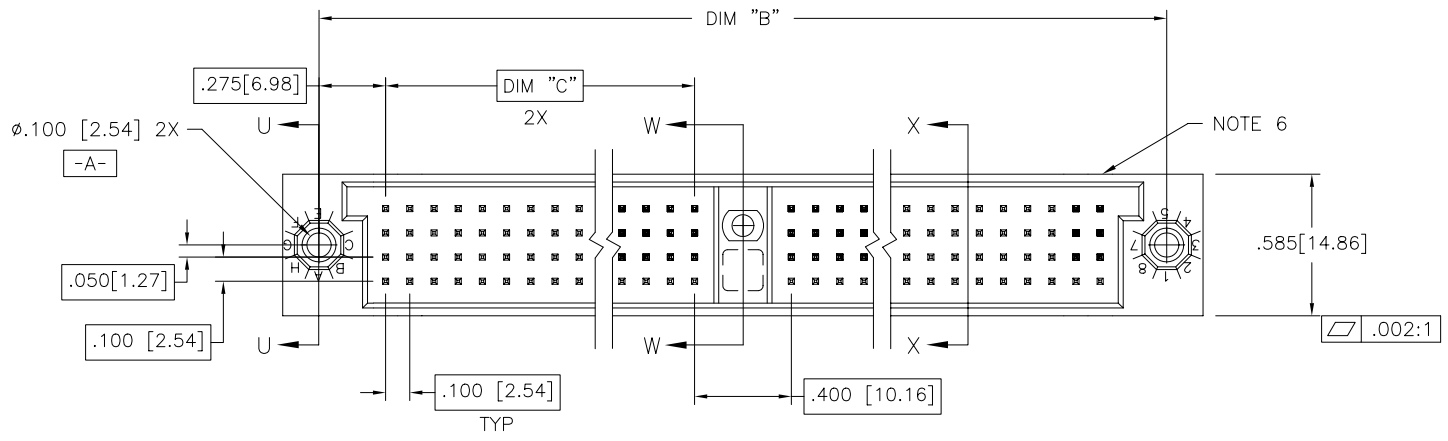


PRODUCT NUMBER  
SEE NOTE 1



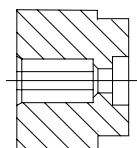
mat'l. code NOTE 3				surface ISO 1302 ✓		tolerance ISO 406 ISO 1101		projection ⊕		product family HPC	
ltr	ecn	no	dr	date	tolerances unless otherwise specified			INCH/MM		title	
G	v23425	JM	10/27/92		angles	linear	.xx ±.01/.3	INCH/MM		4 ROW VERTICAL HEADER	
H	v40287	PDP	1/20/94				.xxx ±.005/.13	scale 1:1		W/SOLDER TAIL FIT PINS, 1 G.P.	
J	v40941	PDP	6/01/94		σ±2'		.xxxx ±.0020/.051			dwg no	
K	c80018	EPK	3/31/98	dr	D. SHEAFFER		3/14/91	FCI		sheet 1 of 2 size	
L	v90018	HTB	1/08/99	enfr	S. CLARK		3/14/91			50016 A3	
M	v00272	JWS	2/01/00	chr	S. CLARK		3/14/91			type Product Customer Drawing	
N	M06-0261	AEA	7/08/06	appd	S. CLARK		3/14/91				
sheet	revision	N	N								
index	sheet	1	2								

Copyright FCI  
 FCIconnect.com

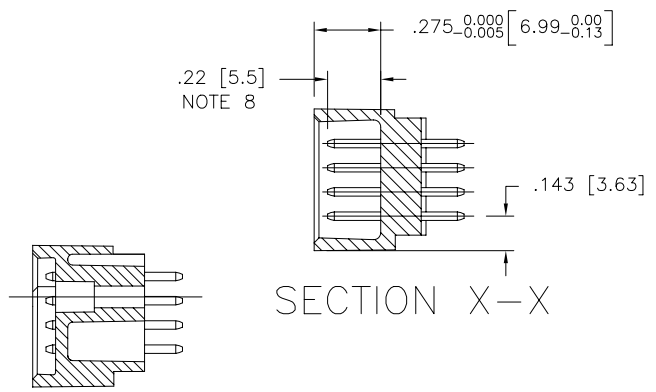
PRODUCT NUMBER	DIM	LENGTH FORMULAS
SEE NOTE 1	DIM "A"	.100/2.54 x NO. OF COLUMNS + 1.05/26.7
	DIM "B"	.100/2.54 x NO. OF COLUMNS + .750/19.05
	DIM "C"	.100/2.54 x NO. OF COLUMNS DIVIDED BY 2 - .100/2.54

NOTES:

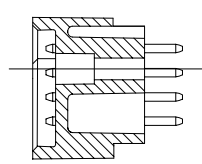
- PRODUCT NUMBERING CODE:  
 $50016 - X\ YYY\ Z$   
 X: TAIL LENGTH (NOTE 5)  
 YYY: NO. OF POSITIONS (NOTE 2)  
 Z: PLATING (NOTE 4)  
 BASE NUMBER
- PRODUCT NUMBERING CODE FOR SELECT LOAD/FMLB PART NUMBERS:  
 $50016 - XXXXX$   
 XXXXX: SEQUENCE NUMBER  
 ALWAYS 'XX'  
 BASE NUMBER
- THIS PRODUCT IS CONFIGURED IN SIZES OF 20 THRU 150 COLUMNS IN INCREMENTS OF TWO.  
 i.e.: 20, 22, 24, 26,.....146, 148, 150.
- HOUSING MATERIAL: GLASS AND MINERAL FILLED HIGH TEMP. THERMOPLASTIC. FLAME RETARDANT PER UL94V-0. COLOR: BLACK.  
 PIN MATERIAL: PHOS BRONZE
- PLATING CONTACT AREA OPTIONS:  
 1 = 30u"/.76u GOLD  
 3 = 50u"/1.27u GOLD  
 5 = 30u"/.76u GXT
- TAIL LENGTH OPTIONS: ( $\pm .015/.38$ )  
 A = .177/4.5      G = .250/6.35  
 C = .533/13.54    J = .120/3.05  
 D = .733/18.62
- COMPANY NAME, PART NUMBER AND LOT CODE TO APPEAR ON THIS SURFACE PER BUS-12-108.
- FOR DOCUMENTATION MENU, SEE BUS-01-057.
- REFERENCE 50811 FOR F.M.L.B. AVAILABLE OPTIONS AND WORKSHEET.



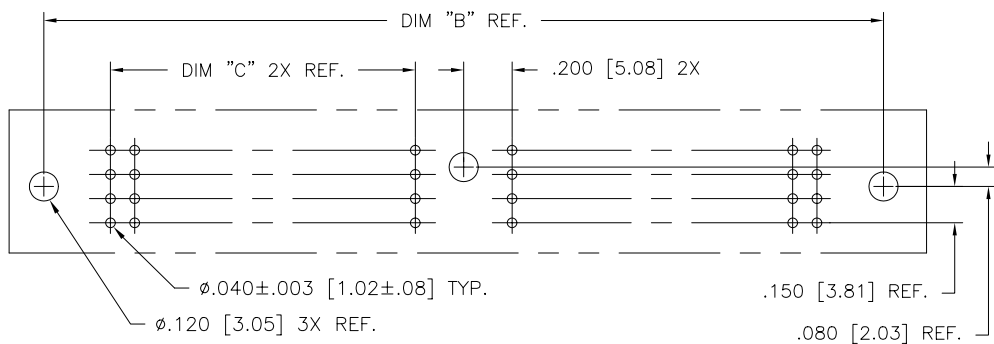
SECTION U-U



SECTION X-X



SECTION W-W



RECOMMENDED PCB LAYOUT  
 (ALL HOLES LOCATED ON .100/2.54 GRID UNLESS OTHERWISE SPECIFIED)

mat'l. code		surface		tolerance		projection		product family	
-		ISO 1302 <input checked="" type="checkbox"/>		ISO 406				HPC	
-		ISO 1101		tolerances unless otherwise specified		INCH/MM		title	
ltr		ecn		no		dr		date	
N								4 ROW VERTICAL HEADER	
								W/SOLDER TAIL FIT PINS, 1 G.P.	
								scale 1:1	
								dwg no	
								sheet 2 of 2 size	
								50016 A3	
								type Product Customer Drawing	
sheet index		revision sheet							

FCJ  
FCJconnect.com  
Copyright FCJ