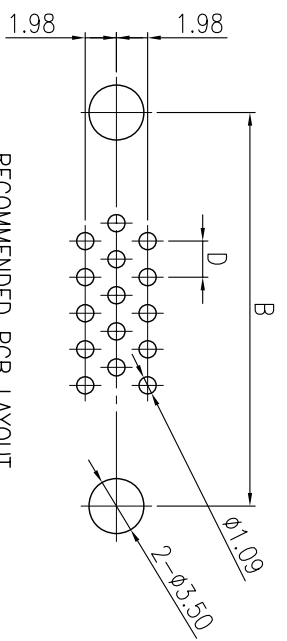
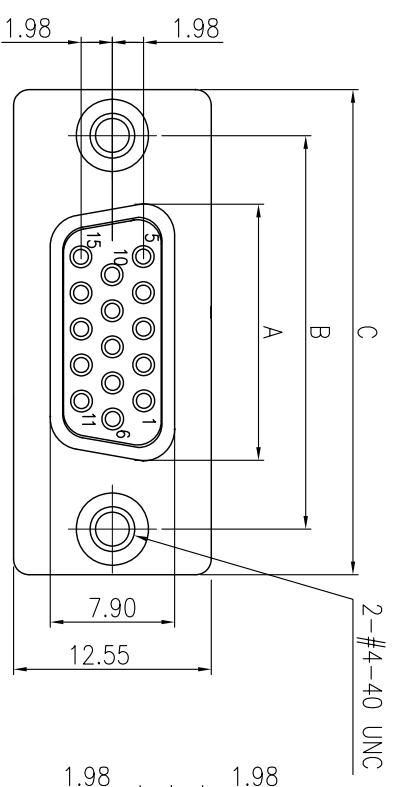
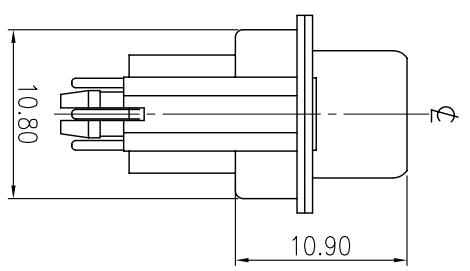
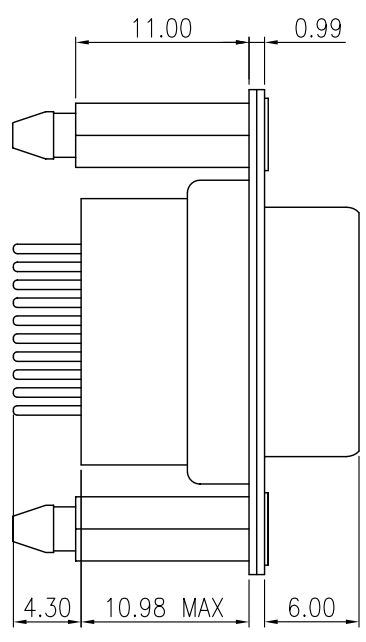


REVISIONS								
SYM	DISCRIPTION	DATE	APPROVED	SYM	DISCRIPTION	DATE	APPROVED	
Δ	NOTE ROHS STANDARD	06/JUL/07	KEN	Δ				
Δ	**CUSTOMER DRAWING FOR REFERENCE ONLY, SAMPLES APPROVAL ARE REQUIRED!!							
							047	



RECOMMENDED PCB LAYOUT



FINISH:  
 CONTACT: GOLD FLASH  
 SHELL: NICKEL PLATED

MATERIAL:  
 CONTACTS: BRASS  
 INSULATOR: P.B.T. UL 94V-0 RATED.  
 SHELL: COLD ROLLER STEEL.

MECHANICAL:  
 CONTACT INSERTION FORCE: 341g MAX.  
 CONTACT SEPERATION FORCE: 21g MAX.

ELECTRICAL:  
 CONTACT CURRENT RATING: 1 AMP  
 DIELECTRIC WITHSTANDING VOLTAGE: AC 1000/60SEC RMS  
 INSULATION RESISTANCE: 5000MΩ MIN. AT DC 500V.  
 CONTACT RESISTANCE: 25mΩ MAX  
 OPERATING TEMPERATURE: -55°C ~ +105°C

ORDER INFORMATION:  
 HDB210-PFXXGX-K  
 HDB: HIGH DENSITY D-SUB CONNECTOR  
 210: SERIES NO.  
 P: PCB TYPE, STRAIGHT  
 F: FEMALE  
 GX: PLATING OPTION  
 GF: GOLD FLASH OVER ALL  
 Gft: GOLD FLASH ON CONTACT, TIN PLATING  
 ON SOLDER TAIL  
 G15t: 15u" GOLD ON CONTACT, TIN PLATING  
 ON SOLDER TAIL  
 G30t: 30u" GOLD ON CONTACT, TIN PLATING  
 ON SOLDER TAIL  
 K: WITH #4-40UNC. IN THE REAR SHELL USE  
 RIVET AS BOARDLOCK

PART NO.	NO. OF CONTACT	DIMENSIONS			
		A	B	C	D
HDB210-PF15GX-K	15	16.33	24.99	30.61	2.29
HDB210-PF26GX-K	26	24.66	33.32	39.14	2.29
HDB210-PF44GX-K	44	38.38	47.04	53.04	2.29
HDB210-PF62GX-K	62	54.84	63.50	69.32	2.41

TOLERANCES UNLESS OTHERWISE SPECIFIED		SIGNATURES		DATE		MODEL	
SYMBOL	UNIT	SCALE	APPROVALS	DRAWN	DATE	TITLE	NO.
Δ	mm	3/1	ZOLA	DAVID	20/OCT/03	HIGH DENSITY D-SUB CONNECTOR	
				ZOLA	20/OCT/03		HDB210-PF__G__K

MMT CORPORATION