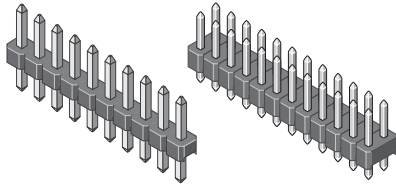


PIN HEADER 2,54mm 1,7mm insulator

ID: 345

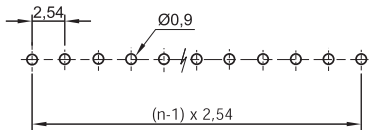
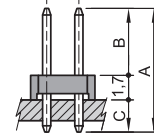
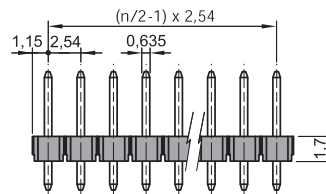
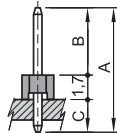
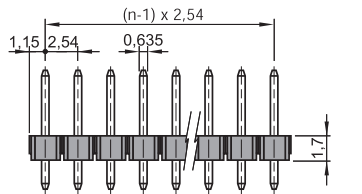
STL 1-XXXXG-17 / STL 2-XXXXG-17

Series 400



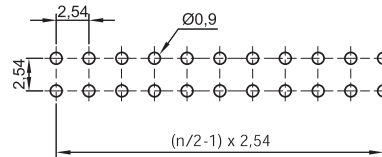
TECHNICAL DATA

Pitch	2,54 mm
Insulating Material	high temp. thermoplast UL94V-0
Contact Material	copper alloy
Rated Current	3 Amp.
Rated Voltage	250 V _{AC/DC}
Withstanding Voltage	1000 V _{AC} for one minute
Operating Temperature	-40°C to +105°C
Maximum Soldering Temperature	260°C for 10 seconds



P.C.B. Layout

Code	A	B	C
1020	10,20	6,00	2,50
1080	10,80	6,60	2,50
1130	11,30	6,30	3,30
1400	14,00	9,00	3,30
1450	14,50	9,50	3,30
1480	14,80	9,80	3,30
1700	17,00	12,00	3,30
1980	19,80	14,80	3,30
2160	21,60	16,60	3,30
2280	22,80	17,80	3,30
2490	24,90	19,90	3,30
Custom			



P.C.B. Layout

All dimensions in mm.
Other dimensions upon request.

STL X - XXXX G XX - 17 - XX U

- Rows: 1 = 1 row, 2 = 2 rows
- Code: see table
- G: straight contacts
- Plating: TT = Sn, GT = Sel. Au, GG = Au
- U: RoHS-compliant with high temp. plastic
- Pins: 1 row: 1 - 40 poles possible, 2 rows: 2 - 80 poles possible
- 17: Insulator height 1,7mm