

Customer Information Sheet

DRAWING No.: M80-831XXXX

SHEET 2 OF 2

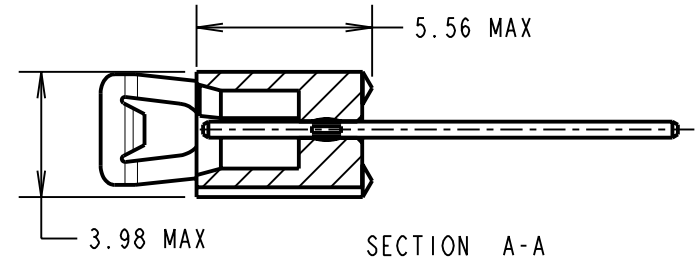
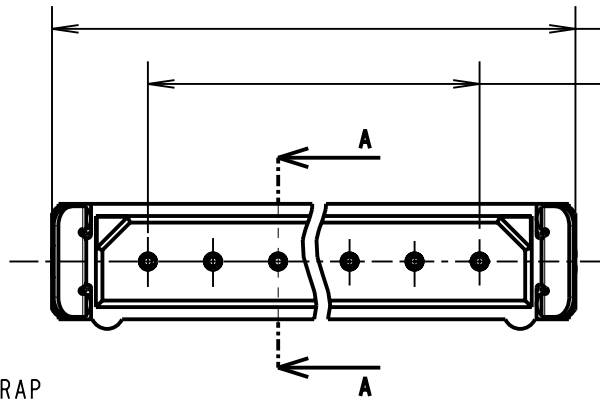
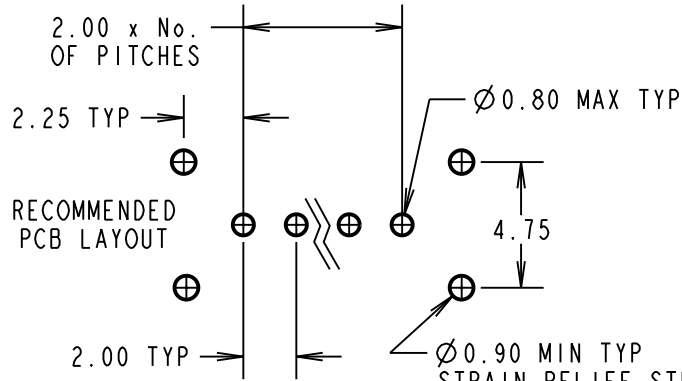
IF IN DOUBT - ASK

(C)

NOT TO SCALE

THIRD ANGLE PROJECTION

ALL DIMENSIONS IN mm



SPECIFICATIONS:

MATERIAL:

MOULDING = POLYAMIDE 46 UL94V-0, BLACK
 CONTACTS = PHOSPHOR BRONZE
 LATCHES = BERYLLIUM COPPER

FINISH:

CONTACTS:
 22 = 0.75 μ GOLD ON CONTACT AREA.
 3.0 μ 90/10 TIN/LEAD ON TAILS
 42 = 0.75 μ GOLD ON CONTACT AREA.
 3.0 μ 100% TIN ON TAILS
 45 = 0.75 μ GOLD
 LATCHES = 1.25 μ NICKEL

ELECTRICAL:

CURRENT RATING (25°C) = 3.0A MAX.
 CURRENT RATING (85°C) = 2.2A MAX.
 WORKING VOLTAGE = 120V AC/DC
 VOLTAGE PROOF = 360V AC/DC
 CONTACT RESISTANCE (INITIAL) = 20 m Ω MAX.
 CONTACT RESISTANCE (AFTER CONDITIONING) = 25 m Ω MAX.
 INSULATION RESISTANCE (INITIAL) = 1000 M Ω MIN.
 INSULATION RESISTANCE (AFTER CONDITIONING) = 100 M Ω MIN.

MECHANICAL:

DURABILITY = 500 OPERATIONS

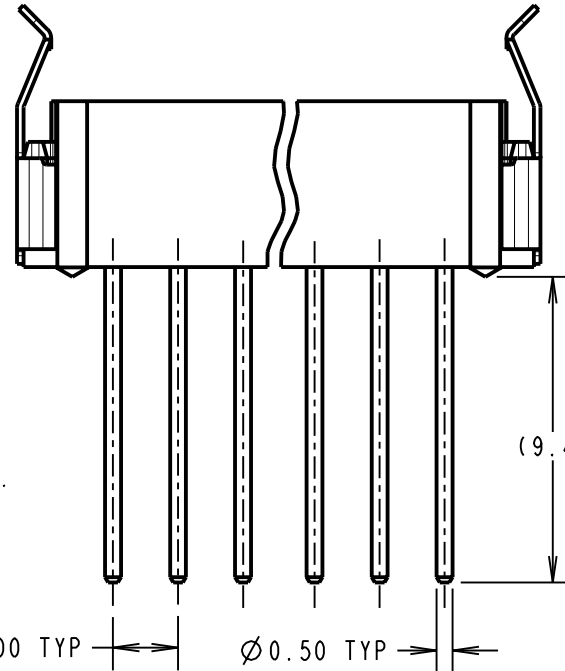
ENVIRONMENTAL:

TEMPERATURE RANGE = -55°C TO +125°C

PACKING:

TRAY

FOR COMPLETE SPECIFICATION, SEE COMPONENT SPECIFICATION C005XX (LATEST ISSUE)



NOTES:

- 2-OFF STRAIN RELIEF STRAPS MAY BE USED WITH EACH CONNECTOR PART No. M80-00300XX.

ORDER CODE:

M80-831XXXX

TOTAL No. OF WAYS _____
 02 - 07, 17, 22.

FINISH:

22 = SELECTIVE GOLD + TIN/LEAD
 42 = SELECTIVE GOLD + 100% TIN
 45 = GOLD

CP	4	30.10.09	10546
NAME	ISS.	DATE	C/NOTE
APPROVED: C.PENROSE			
CHECKED: S.FLOWER			
DRAWN: W. J. BOURNE			
CUSTOMER REF.:			
ASSEMBLY DRG:			

HARWIN

HARWIN USA
 TEL: 603 893 5376
 FAX: 603 893 5396
 mis@harwin.com

HARWIN Europe (UK)
 TEL: 023 9231 4545
 FAX: 023 9231 4590
 mis@harwin.co.uk

HARWIN Asia
 TEL: +65 6 779 4909
 FAX: +65 6 779 3868
 mis@harwin.com.sg

THIS DRAWING AND ANY INFORMATION OR DESCRIPTIVE MATTER SET OUT HEREON ARE CONFIDENTIAL AND COPYRIGHT PROPERTY OF THE HARWIN GROUP AND MUST NOT BE DISCLOSED, LOANED, COPIED OR USED FOR MANUFACTURING, TENDERING OR FOR ANY OTHER PURPOSE WITHOUT THEIR WRITTEN PERMISSION.

TOLERANCES

X. = ± 1 mm
 X.X = ± 0.25 mm
 X.XX = ± 0.10 mm
 X.XXX = ± 0.01 mm

ANGLES = $\pm 5^\circ$

UNLESS STATED

MATERIAL:

SEE ABOVE

FINISH: SEE ABOVE

S/AREA:

mm²

TITLE:

DATAMATE SIL
 VERTICAL PC TAIL PLUG
 ASSEMBLY - LATCHED

DRAWING NUMBER:

M80-831XXXX

SHT
 2
 OF
 2