

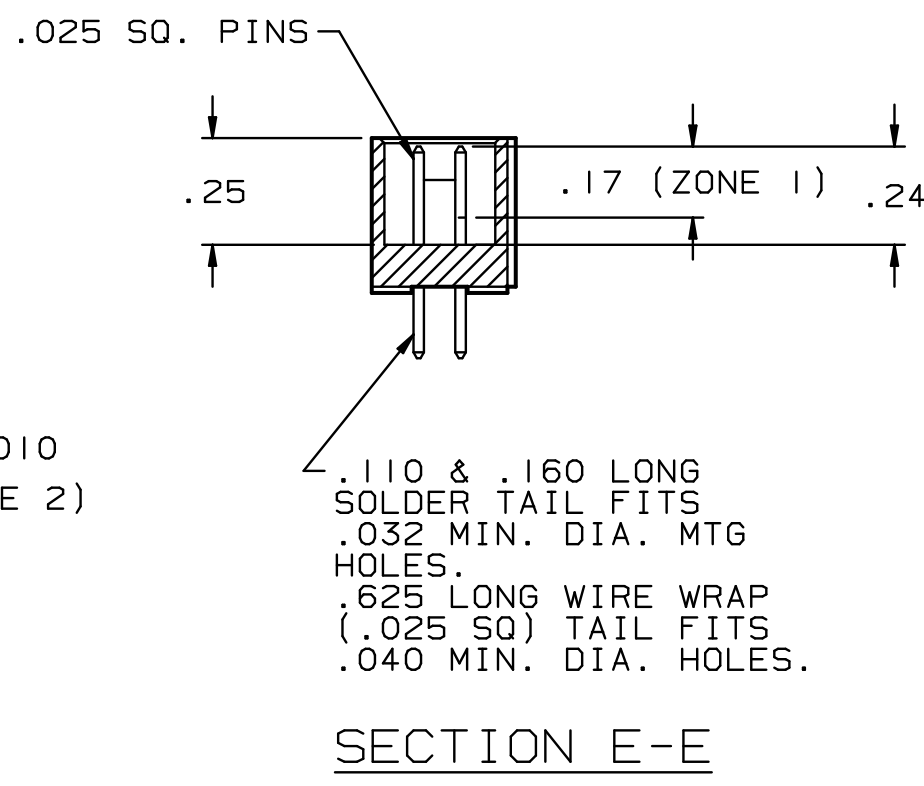
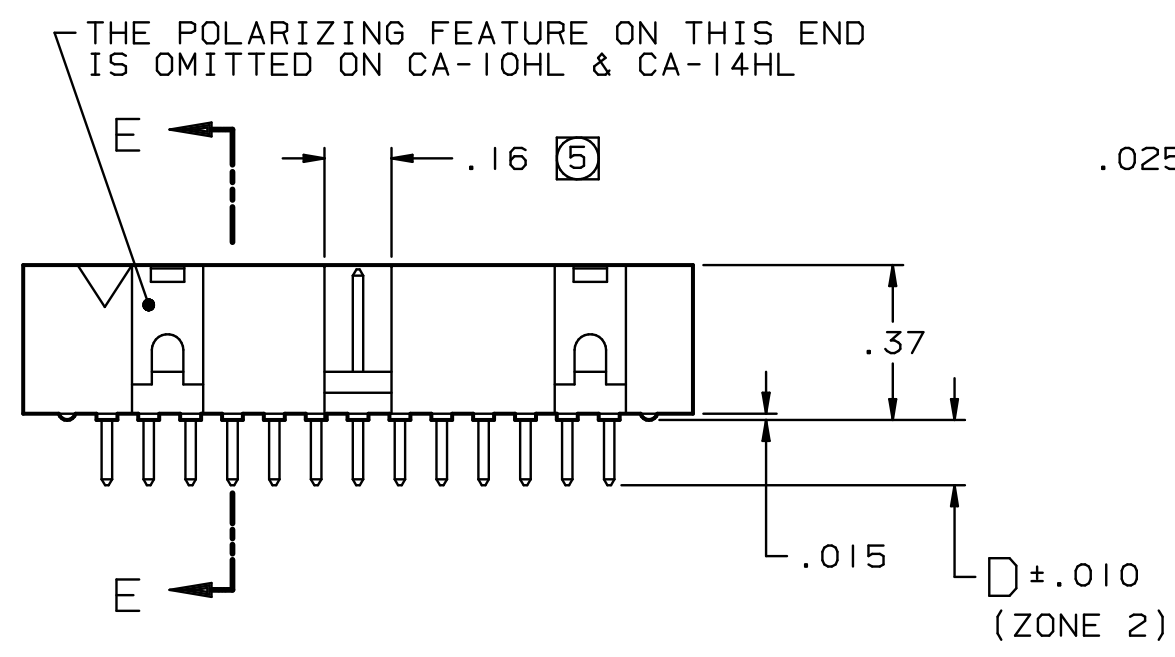
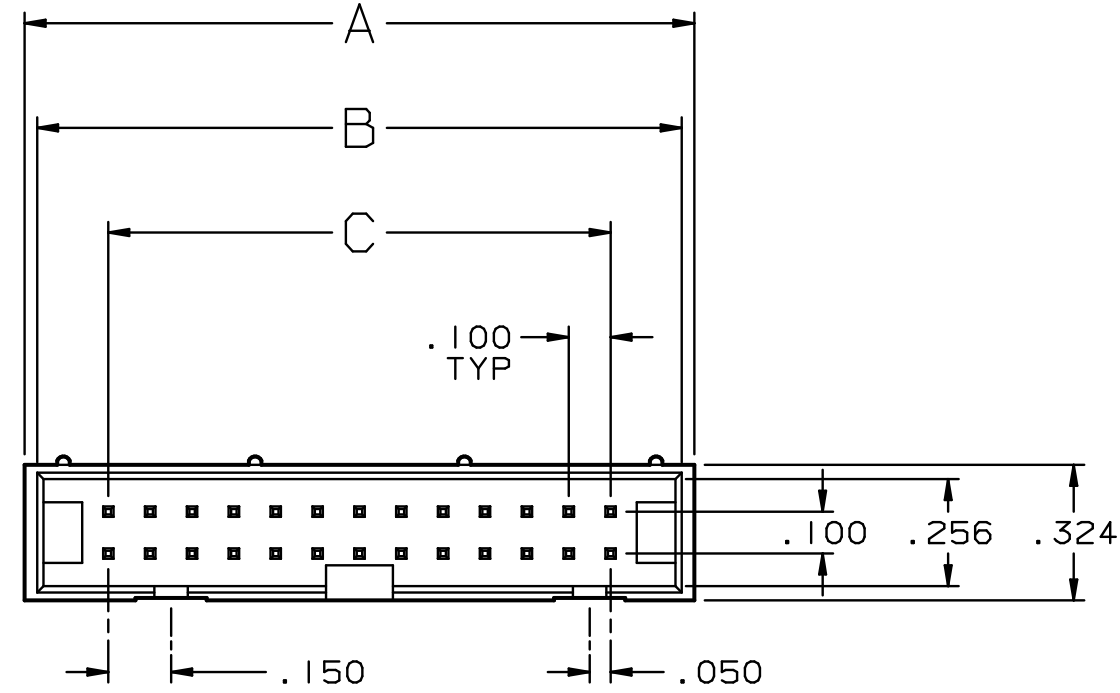
4

3

2

1

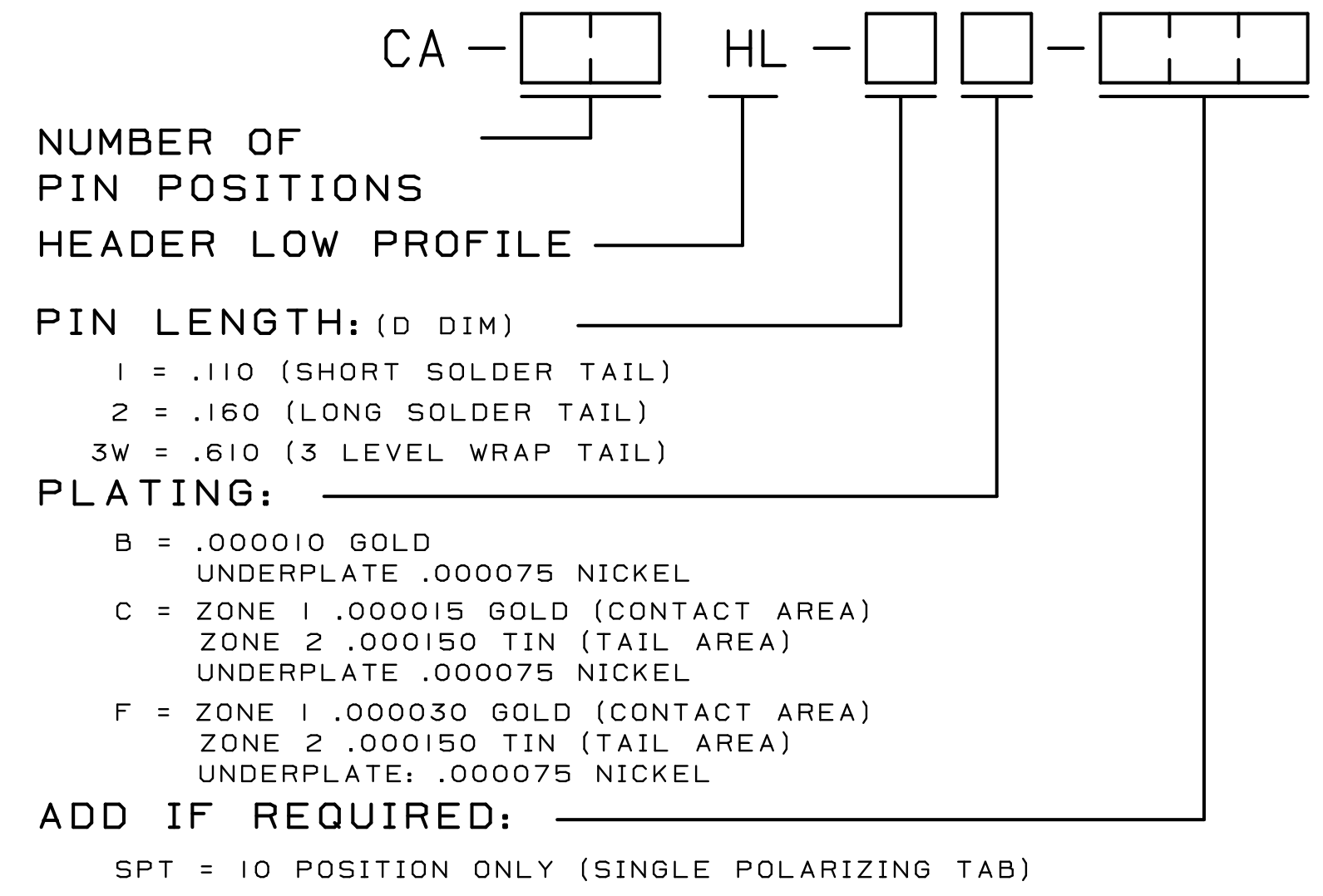
REVISIONS			
LTR	DESCRIPTION	DATE	APPROVED
A	RELEASE TO PRODUCTION	7-2-84	J.M.
B	ECO 653	7-31-84	A.J.
C	ECO 665	8-7-84	J.M.
D	ECO 691	12-4-84	A.J.
E	SEE ECO 1076	7-22-88	A.J.
F	SEE ECO 2085	1-21-94	A.J.
G	SEE DO 5759	CP 4-28-05	L.F.



8. TABULATION:

NO OF POSITIONS	A	B	C
10	.80	.71	.400
14	1.00	.91	.600
16	1.10	1.01	.700
20	1.30	1.21	.900
26	1.60	1.51	1.200
34	2.00	1.91	1.600
40	2.30	2.21	1.900
50	2.80	2.71	2.400
60	3.30	3.21	2.900

7. ORDERING NOMENCLATURE:



- 7. EFFECTIVE AS OF MANUFACTURE DATE 04-27-2005, THIS CONNECTOR IS RoHS COMPLIANT.
- 6. POLARIZING KEY PART NO. CA-HK, IS ORDERED SEPARATELY. KEY TO BE INSERTED BY CUSTOMER.
- ⑤ POLARIZING SLOTS:
 - SINGLE SLOT ON CA-10HL-XX-SPT
 - NO SLOT ON CA-10HL
 - SINGLE SLOT ON CA-14HL THRU CA-40HL
 - 3 SLOTS ON CA-50HL AND CA-60HL
- 4. FOR DETAIL SPECIFICATIONS, REFER TO SPECIFICATION NO. CA-100036
- 3. PLATING: SEE ORDERING NOMENCLATURE
- 2. CONTACT MATERIAL: PHOSPHOR BRONZE
- 1. INSULATOR MATERIAL: GLASS FILLED POLYESTER, GRAY UL94V-0

NOTES: UNLESS OTHERWISE SPECIFIED

DIMENSIONS ARE IN INCHES TOLERANCES ARE: DECIMALS ANGLES .XX ± .010 ± 3° .XXX ± .005	APPROVALS DRAWN M. ROA CHECKED A. JOCHEN	DATE 3-6-84 4-30-84	CIRCUIT ASSEMBLY CORP. 18 THOMAS ST., IRVINE, CALIFORNIA 92618-2777 CONNECTOR ASSEMBLY-HL (STRAIGHT PINS)
	THE INFORMATION AND DESIGN DISCLOSED HEREIN WAS ORIGINATED BY AND IS THE PROPERTY OF CIRCUIT ASSEMBLY CORPORATION. CIRCUIT ASSEMBLY CORPORATION RESERVES ALL PATENT, PROPRIETARY, DESIGN, MANUFACTURING, REPRODUCTION, USE AND SALES RIGHTS THERE TO, AND TO ANY ARTICLE DISCLOSED HEREIN EXCEPT TO THE EXTENT RIGHTS ARE EXPRESSLY GRANTED TO OTHERS. THE FOREGOING DOES NOT APPLY TO VENDOR PROPRIETARY RIGHTS.		
DIMENSIONS IN BRACKETS [X.XX] ARE IN MILLIMETERS TOLERANCES ARE: DECIMALS ANGLES .X ± .XX ±	SIZE CODE IDENT NO. DRAWING NO. REV. C 52072 620074 G		SCALE: 2 : 1 SHEET 1 OF 1

4

3

2

1