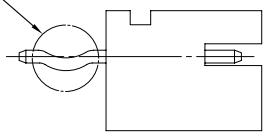
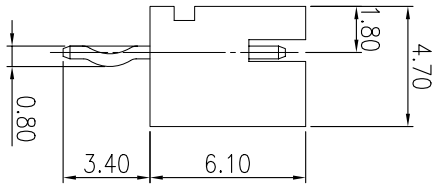
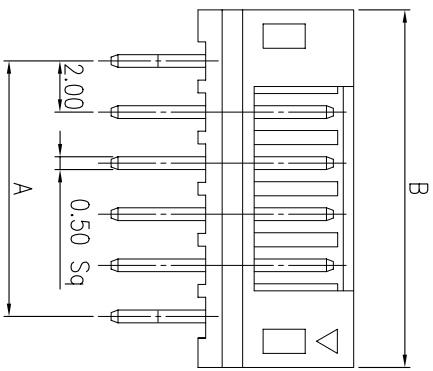
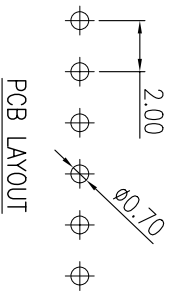
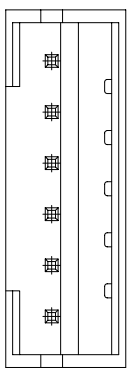


V1.1 NOTE: THIS DEVICE IS ROHS COMPLIANT.



OPTION: KINKED LEGS  
 MMT P/N: MCB001-PXXT-K  
 b: PITCH=2.00mm  
 011: SERIES NO.  
 P: PCB TYPE, STRAIGHT  
 XX: NO. OF CONTACTS  
 T: TIN PLATED  
 K: KINKED LEGS

PART NO.	POLES	DIMENSION		PCS/BAG
		A	B	
MCB011-P02T	2	2.00	6.00	1,001
MCB011-P03T	3	4.00	8.01	1,001
MCB011-P04T	4	6.00	10.01	1,001
MCB011-P05T	5	8.01	12.01	1,001
MCB011-P06T	6	10.01	14.01	1,001
MCB011-P07T	7	12.01	16.01	1,001
MCB011-P08T	8	14.01	18.00	1,001
MCB011-P09T	9	16.01	20.00	1,001
MCB011-P10T	10	18.00	22.00	1,001
MCB011-P11T	11	20.00	24.00	1,001
MCB011-P12T	12	22.00	26.00	1,001
MCB011-P13T	13	24.00	28.00	1,001
MCB011-P14T	14	26.00	30.00	1,001
MCB011-P15T	15	28.00	32.00	1,001
MCB011-P16T	16	30.00	34.00	1,000

SPECIFICATIONS  
 VOLTAGE RATING : 100V AC/DC  
 CURRENT RATING : 12 AC/DC  
 WITHSTANDING VOLTAGE : 800V AC/MINUTE  
 INSULATION RESISTANCE : 1,000 MΩ MIN.  
 TEMPERATURE RANGE : -25°C ~ +85°C  
 CONTACT RESISTANCE : 20mΩ MAX.

MATERIAL :  
 PIN: BRASS / TIN PLATED  
 BASE : NYLON 46 , UL94V-0

SYMBOL		DESCRIPTION	DATE	APPROVED	SYM	DISCUSSION	DATE	APPROVED
△	NOTE	ROHS STANDARD	18/MAY/05	CONNIE	△			

\*\*CUSTOMER DRAWING FOR REFERENCE ONLY, SAMPLES APPROVAL ARE REQUIRED!!

MATING		HOUSING		TERMINAL		MODEL	
TOLERANCES UNLESS OTHERWISE SPECIFIED		SIGNATURES		DATE		TITLE	
F0.25		DRAWN CONNIE		18/MAY/05		WAFER	
SYMBOL		CHECKED		APPROVALS		NO.	
UNIT		SAM		18/MAY/05		MCB001-P_ _T	
SCALE		5/1					
mm							

MMT CORPORATION