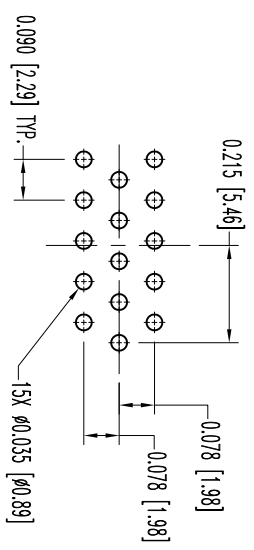
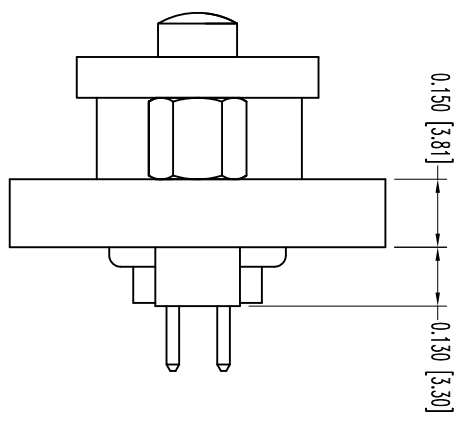
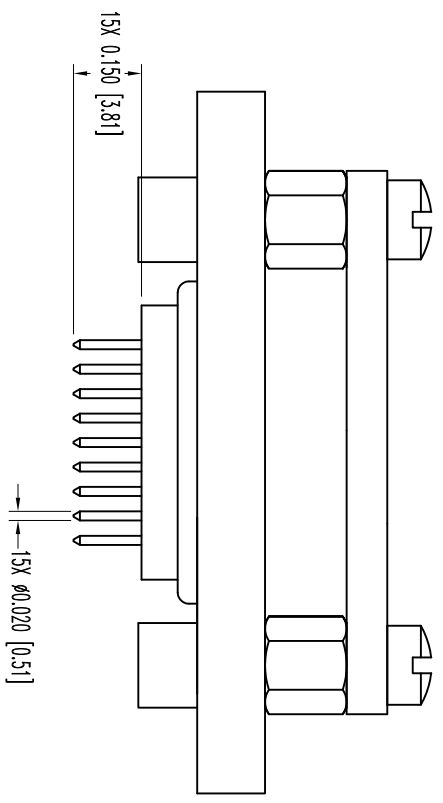
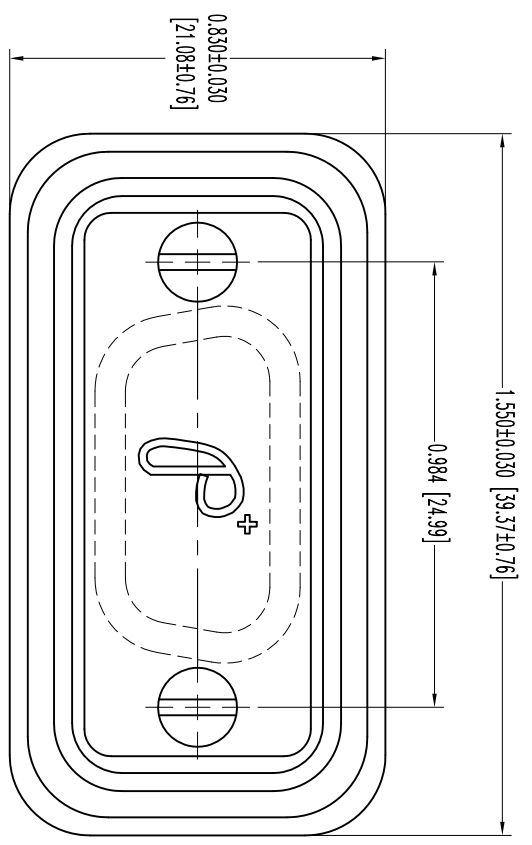


THIS DRAWING CONTAINS INFORMATION PROPRIETARY TO POSITRONIC AND ITS SUBSIDIARIES. POSITRONIC BELIEVES THE DATA ON THIS DRAWING TO BE RELIABLE, SINCE THE USER HAS ASSUMED RESPONSIBILITY FOR OBTAINING SUCH INFORMATION AS SUCH INFORMATION IS OBTAINED OR DAMAGES INCURRED FROM USE OF SUCH INFORMATION IN WHOLE OR IN PART.



CONTACT HOLE PATTERN

DATE	REV	REVISION RECORD	APP	DR	CK
8-5-03	NC	ECO 21237	RCW	ME	TK
5-31	A	ECO 34076	COLM	BS	COLM

SK5086

		POSITRONIC INDUSTRIES INC. www.connectpositronic.com		FSC# 28198	
		DECIMAL TOL. ± 0.015 [0.38]	SCALE N.T.S.	DRAWN BY M. ENBA	APPROVED BY R. WILLIAMS
TITLE WDD SERIES		WDD15F3C5ATTYS		REV. A	

- NOTES:
1. MATERIALS AND FINISHES:
 INSULATOR: GLASS FILLED POLYESTER PER ASTM-D5927, UL 94V-0, COLOR: BLACK.
 CONTACTS: PRECISION MACHINED COPPER ALLOY, 0.0000350 [0.76µ] GOLD OVER NICKEL PLATE.
 SHELLS AND JACKSCREW SYSTEMS: STAINLESS STEEL, PASSIVATED.
 PANEL MOUNTING PLATE: GLASS FILLED POLYESTER.
 DUST COVER: CONDUCTIVE POLYETHYLENE.
 2. DETAILED PRODUCT, MECHANICAL, AND ELECTRICAL INFORMATION IS AVAILABLE IN THE LATEST ENVIRONMENTAL D-SUB PRODUCT PUBLICATION. VISIT CONNECTPOSITRONIC.COM/PRODUCTS/61/ENVIRONMENTALLYSEALEDORCONNECTPOSITRONIC.COM.
 3. DIMENSIONS ARE IN INCHES [MILLIMETERS].