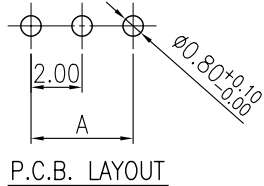
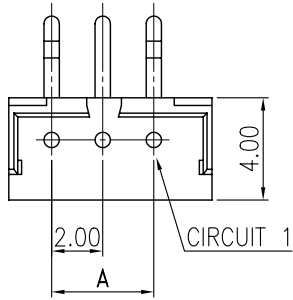


V1.1

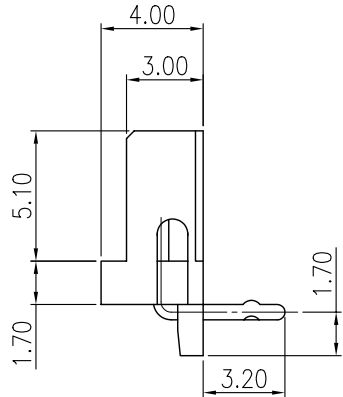
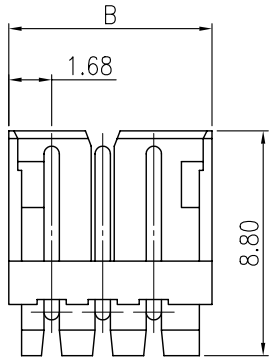
REVISIONS							
SYM	DISCRIPTION	DATE	APPROVED	SYM	DISCRIPTION	DATE	APPROVED
△				△			
△				△			

****CUSTOMER DRAWING FOR REFERENCE ONLY, SAMPLES APPROVAL ARE REQUIRED!!**



SPECIFICATIONS
 CURRENT RATING: 1A AC,DC
 VOLTAGE RATING: 100V AC,DC
 TEMPERATURE RANGE: -25°C ~ +85°C
 CONTACT RESISTANCE: 20MΩ MAX.
 INSULATION RESISTANCE: 1000MΩ MIN.
 WITHSTAND VOLTAGE : 800V AC/MINUTE
 MATERIAL: NYLON 66,UL94V-0

ORDER INFORMATION
 MCb006-PaXX02T
 MC: WAFER SERIES
 b: PITCH = 2.00mm
 006: SERIES NO.
 Pa: PCB TYPE, RIGHT ANGLE TYPE
 XX: NO. OF CONTACTS
 T: CONTACT PLATING , TIN
 PLATED OVER ALL



PART NO.	Contacts	DIMENSIONS(mm)	
		A	B
MCb006-Pa0202T	1X2	2.00	5.96
MCb006-Pa0302T	1X3	4.00	7.96
MCb006-Pa0402T	1X4	6.00	9.96
MCb006-Pa0502T	1X5	8.00	11.96
MCb006-Pa0602T	1X6	10.00	13.96
MCb006-Pa0702T	1X7	12.00	15.96
MCb006-Pa0802T	1X8	14.00	17.96
MCb006-Pa0902T	1X9	16.00	19.96
MCb006-Pa1002T	1X10	18.00	21.96
MCb006-Pa1102T	1X11	20.00	23.96
MCb006-Pa1202T	1X12	22.00	25.96
MCb006-Pa1302T	1X13	24.00	27.96
MCb006-Pa1402T	1X14	26.00	29.96
MCb006-Pa1502T	1X15	28.00	31.96

MATING	HOUSING	MCb006-XX-H	TERMINAL	MCb006-T
TOLERANCES UNLESS OTHERWISE SPECIFIED ±0.30	SIGNATURES		DATE	MODEL
	DRAWN	VIVI	19/DEC/03'	TITLE
	CHECKED	ZOLA	19/DEC/03'	NO.
SYMBOL	UNIT	SCALE	APPROVALS	
△	mm	5/1	MMT CORPORATION	
				MCb006-Pa__T