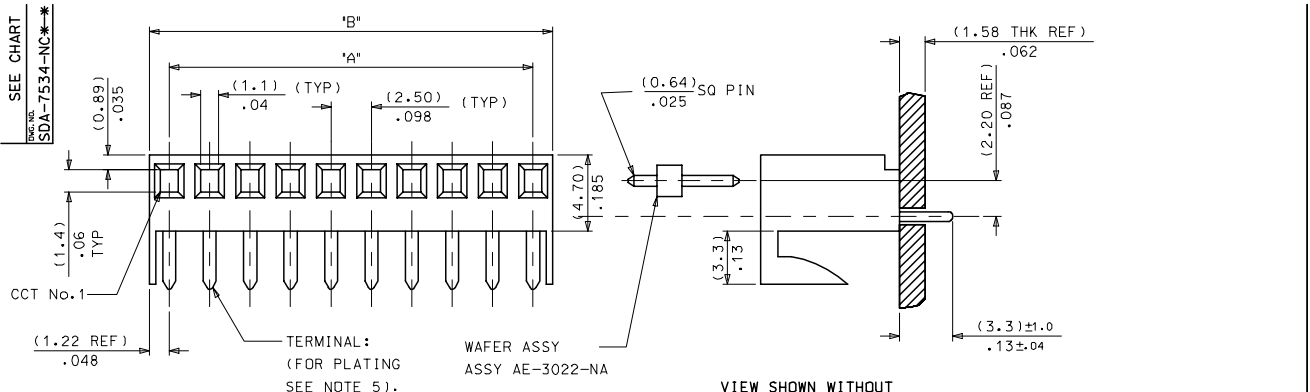
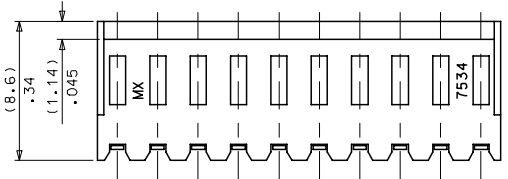


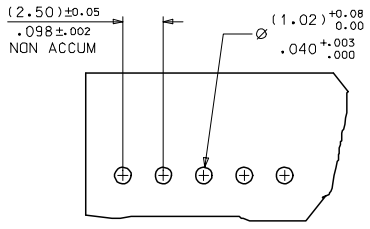
SEE CHART
SDA-7534-NC**



VIEW SHOWN WITHOUT
LOCKING RAMP



VIEW WITH LOCKING RAMP



2	F
1	F

- NOTES:
1. KK .098 ASSEMBLIES MAY BE STACKED END TO END
 2. DIMENSIONS SHOWN ARE (MM)/IN
 3. SEE SHEET 2 FOR A&B DIMENSIONS & PART No.S
 4. HOUSING MATERIAL: NYLON 6/6-94V-0.
 5. CONTACT PLATING: HOT TIN DIP (0.0013) / .00005 MIN
 6. TERMINALS LUBRICATED WITH MX-1-3

LEAD FREE CONVERSION
E2004-0792
PSHEAHAN 04/02/20
//

5 : 1 X
V.MURTAG 09/01/99
25 010 M.GOONEY 01/09/99
35 014 MWILHITE 01/09/99
1/2

S7534CX.LDGN SEE CHART SDA-7534-NC** 1 OF 2

SHT. 1 OF 1		MRI-SDA-7534-NC* - *			
<i>MODIFICATION RECORD INDEX</i>					
ECN No.	DATE	ISS.	INIT.	SHTS.	DESCRIPTION OF MOD.
ERO 11637	80.04.16	C1		1&2	ADDED LOCKING RAMP & CHNG'D No.
MESL 026	82.03.04	D	GH	1&2	
E10119	91.06.21	E	PMN	1&2	
E90269	99.01.09	F	VM	1&2	DRAWN ON CAD
MOLEX EUROPE		REVISE ONLY ON CAD SYSTEM			
THIS DRAWING CONTAINS INFORMATION THAT IS PROPRIETARY TO MOLEX INC & SHOULD NOT BE USED WITHOUT WRITTEN PERMISSION		CADDAM FILENAME S7534CX1		.DGN	ISSUE F

G

PART NO. SEE CHART
 DWG. NO. SDA-7534-NC

CCT SIZE	DIM 'A'	DIM 'B'	ENG NO.	PART NO.	MISSING TERMINAL LOCATION
8	(17.50 ±0.13) .689 ±0.05	(19.94 ±0.23) .785 ±0.09	A-7534-8C-51	1-22-02-2088	2&7
20	(47.50 ±0.25) 1.870 ±0.10	(49.94 ±0.36) 1.966 ±0.14	A-7534-20C	22-02-1205	
19	(45.00 ±0.23) 1.772 ±0.09	(47.44 ±0.33) 1.860 ±0.13	-19C	22-02-1195	
18	(42.50 ±0.23) 1.674 ±0.09	(44.94 ±0.33) 1.769 ±0.13	-18C	22-02-1185	
17	(40.00 ±0.20) 1.575 ±0.08	(42.44 ±0.30) 1.672 ±0.12	-17C	22-02-1175	
16	(37.50 ±0.20) 1.477 ±0.08	(39.94 ±0.30) 1.572 ±0.12	-16C	22-02-1165	
15	(35.00 ±0.20) 1.378 ±0.08	(37.44 ±0.30) 1.475 ±0.12	-15C	22-02-1155	
14	(32.50 ±0.18) 1.280 ±0.07	(34.94 ±0.28) 1.376 ±0.11	-14C	22-02-1145	
13	(30.00 ±0.18) 1.181 ±0.07	(32.44 ±0.28) 1.278 ±0.11	-13C	22-02-1135	
12	(27.50 ±0.18) 1.083 ±0.07	(29.94 ±0.28) 1.179 ±0.11	-12C	22-02-1125	
11	(25.00 ±0.15) .984 ±0.06	(27.44 ±0.25) 1.081 ±0.10	-11C	22-02-1115	
10	(22.50 ±0.15) .886 ±0.06	(24.94 ±0.25) .982 ±0.10	-10C	22-02-1105	
9	(20.00 ±0.13) .787 ±0.05	(22.44 ±0.23) .884 ±0.09	-9C	22-02-1095	
8	(17.50 ±0.13) .689 ±0.05	(19.94 ±0.23) .785 ±0.09	-8C	22-02-1085	
7	(15.00 ±0.13) .591 ±0.05	(17.44 ±0.23) .687 ±0.09	-7C	22-02-1075	
6	(12.50 ±0.10) .492 ±0.04	(14.94 ±0.23) .589 ±0.09	-6C	22-02-1065	
5	(10.00 ±0.10) .394 ±0.04	(12.44 ±0.20) .490 ±0.08	-5C	22-02-1055	
4	(7.50 ±0.10) .295 ±0.04	(9.94 ±0.20) .392 ±0.08	-4C	22-02-1045	
3	(5.00 ±0.10) .197 ±0.04	(7.44 ±0.20) .293 ±0.08	-3C	22-02-1035	
2	(2.50 ±0.10) .098 ±0.04	(4.94 ±0.20) .194 ±0.08	A-7534-2C	22-02-1025	

ENG NO.	PART NO.	MISSING TERMINAL LOCATION
A-7534-8CR-51	NOT TOOLED	2&7
A-7534-20CR		
-19CR		
-18CR		
-17CR		
-16CR		
-15CR		
-14CR		
-13CR		
-12CR		
-11CR		
-10CR		
-9CR		
-8CR		
-7CR		
-6CR		
-5CR		
-4CR		
-3CR		
A-7534-2CR	NOT TOOLED	

GENERAL TOLERANCES: (UNLESS SPECIFIED)	SCALE	DESIGN UNITS	THIRD ANGLE PROJECTION	DIMENSIONS:	SHT	REV
4 PLACES ±0.10 3 PLACES ±0.15 2 PLACES ±0.20 1 PLACE ±0.30	1:1	MM	<input checked="" type="checkbox"/> THIRD ANGLE PROJECTION	MM INCH INCH MM MM ONLY	2	OF 2
ANGULAR: ± 1/2°	DRAWN BY & DATE V.MURTAG 09/01/99	CHECKED BY & DATE M.GOODNEY 01/09/99	TITLE: KK CONNECTOR -P.C. TAILS STRAIGHT SOLDER TYPE, WITH CAT EARS	MATERIAL NO. S7534CX2.DGN	SEE CHART SDA-7534-NC	
DRAFT WHERE APPLICABLE MUST REMAIN WITHIN DIMENSIONS	APPROVED BY & DATE M.MILHITE 01/09/99	CAD FILENAME S7534CX2.DGN	THIS DRAWING CONTAINS INFORMATION THAT IS PROPRIETARY TO MOLEX INCORPORATED AND SHOULD NOT BE USED WITHOUT WRITTEN PERMISSION.		SHEET NO. 2 OF 2	

SEE SHEET 1
 EC No. E90269
 DRWN: VMURTAG 01/03/99
 CHK: /
 APPR: /

QUALITY SYMBOLS
 MAJOR =
 CRITICAL =

REVISIONS
 REV DESCRIPTION

7132-1283 10 9 8 7 6 5 4 3 2 1