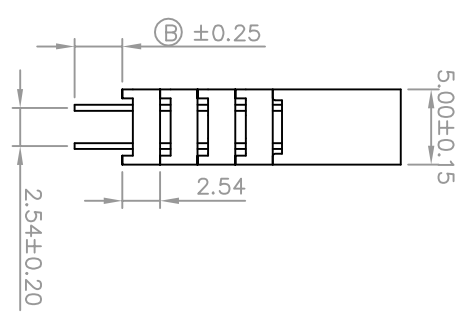
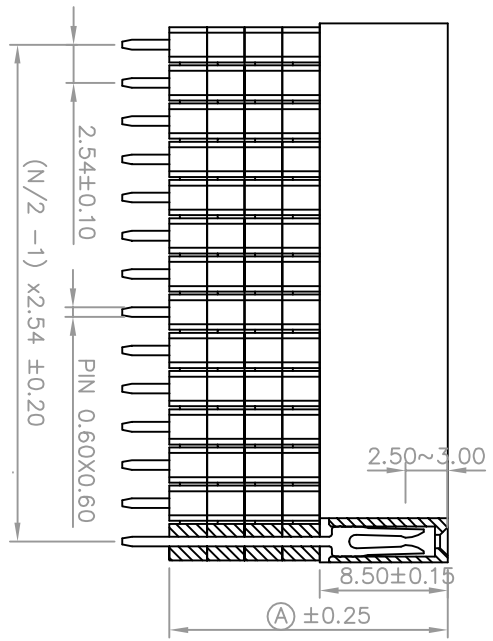
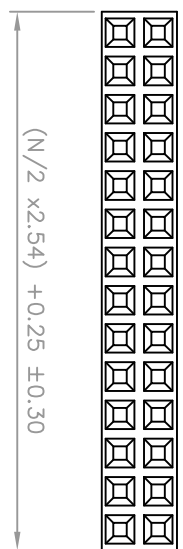
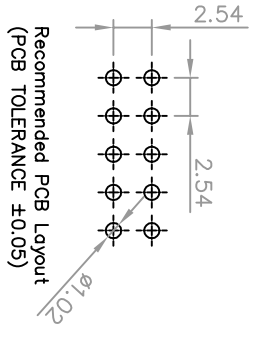


Z≠	A	B
1	11.05	3.00
2	11.05	8.10
3	13.59	5.60
4	16.13	3.00
5	11.05	13.00
6	13.59	10.60
7	16.13	8.00
8	18.67	5.50



D	19-12-07	Changed dimension contacts (from 0.64x0.40mm to 0.60x0.60mm)
C	21/11/05	Changed dimension contacts (from 0.60x0.60mm to 0.64x0.40mm) / Updating dimensions A & B / Updating
B	28/01/05	UPDATINGS
A	03/08/04	Updating platings (Y= 7: selective gold 0.25µm)
INDEX	DATE	MODIFICATION

Material: Pin: copper alloy Insulator: Nylon 6T

Platings Y= 0: GOLD PLATED 0.25µm Y= 1: GOLD FLASH Y= 4: TIN PLATED Y= 7: SELECTIVE GOLD 0.25µm

Protection XX= N: Number of contacts (04±80) Z= SEE PLAN

**KONTEK**  
ELECTRONIC CONNECTORS MANUFACTURING

Denomination: FEMALE HEADER ELEVATED 2.54mm

Cod. 47797231XX4YZ

File: 47797231XX4YZ

Dis. Nr. 11111111

D