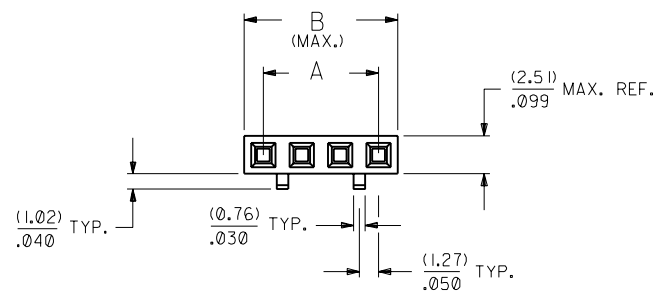


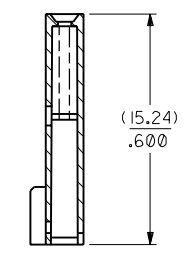
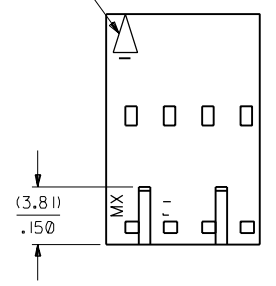
NOTES:

- 1) MATERIAL: G.F. POLYESTER
- 2) HOUSING TO BE USE WITH TERMINAL PT. NO. 70058-****
- 3) SEE CHART FOR CIRCUIT SIZES.
- 4) TO BE USED WITH (0.64)/.025 SQ. OR RD. PINS.
- 5) PARTS STACKABLE END TO END ON (2.54)/.100 CENTERS.
- 6) REFER TO PRODUCT SPECIFICATION NO. : P.S.-70058
- 7) PARTS MAY OR MAY NOT BE SUPPLIED WITH EXTERIOR CORE-OUT CONFIGURATION. SEE DWG. SD-70066-**** FOR OPTIONAL HOUSING DETAILS.
- 8) PACKAGE PER PK-70066-100.

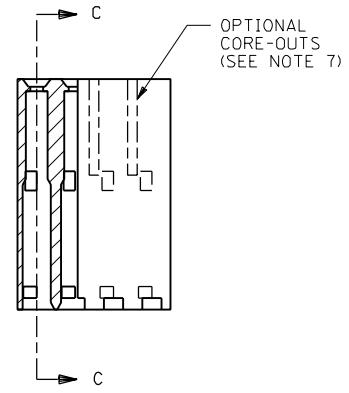
OPTION "D"



CIRCUIT NO. 1 IDENTIFICATION



SECTION C-C



CKT. SIZE	EDP. NO.	ENG. NO.	A	B
2	50-57-9302	70066-0106	(2.54)/.100	(5.05)/.199
3	50-57-9303	70066-0107	(5.08)/.200	(7.59)/.299
4	50-57-9304	70066-0108	(7.62)/.300	(10.13)/.399
5	50-57-9305	70066-0109	(10.16)/.400	(12.67)/.499
6	50-57-9306	70066-0110	(12.70)/.500	(15.21)/.599
7	50-57-9307	70066-0111	(15.24)/.600	(17.75)/.699
8	50-57-9308	70066-0112	(17.78)/.700	(20.29)/.799
9	50-57-9309	70066-0113	(20.32)/.800	(22.83)/.899
10	50-57-9310	70066-0114	(22.86)/.900	(25.37)/.999
11	50-57-9311	70066-0115	(25.40)/1.000	(27.91)/1.099
12	50-57-9312	70066-0116	(27.94)/1.100	(30.45)/1.199
13	50-57-9313	70066-0117	(30.48)/1.200	(32.99)/1.299
14	50-57-9314	70066-0118	(33.02)/1.300	(35.53)/1.399
15	50-57-9315	70066-0119	(35.56)/1.400	(38.07)/1.499
16	50-57-9316	70066-0120	(38.10)/1.500	(40.61)/1.599
17	50-57-9317	70066-0121	(40.64)/1.600	(43.15)/1.699
18	50-57-9318	70066-0122	(43.18)/1.700	(45.69)/1.799
19	50-57-9319	70066-0123	(45.72)/1.800	(48.23)/1.899
20	50-57-9320	70066-0124	(48.26)/1.900	(50.77)/1.999
21	50-57-9321	70066-0125	(50.80)/2.000	(53.31)/2.099
22	50-57-9322	70066-0126	(53.34)/2.100	(55.85)/2.199
23	50-57-9323	70066-0127	(55.88)/2.200	(58.39)/2.299
24	50-57-9324	70066-0128	(58.42)/2.300	(60.93)/2.399
25	50-57-9325	70066-0129	(60.96)/2.400	(63.47)/2.499

MFG. SH. REV.		DIMENSIONS SHOWN (METRIC) INCH UNLESS OTHERWISE SPECIFIED TOLERANCES: ANGULAR ± 1/2°		REVISIONS ONLY ON CAD SYSTEM	
REVISIONS		INCH METRIC 3 PLACE ± .010 --- 2 PLACE ± .014 ± 0.25 1 PLACE --- ± 0.35		TITLE HOUSING CONNECTOR (2.54)/.100 GRID STACKABLE SINGLE ROW	
ADD PKG NOTE ECN UDT2000-0468 SCHAFER 99/12/1		DRAFT WHERE APPLICABLE MUST REMAIN WITHIN DIMENSIONS		SHEET NO. 1 DATE 03/28/86	
REVISIONS		DRWG. NO. SD-70066-0106-0129		FILE NAME 700660106	
REVISIONS		DRWG. NO. SD-70066-0106-0129		THIS DRAWING CONTAINS INFORMATION THAT IS PROPRIETARY TO MOLEX INC. AND SHOULD NOT BE USED WITHOUT WRITTEN PERMISSION.	
REVISIONS		DRWG. NO. SD-70066-0106-0129		DIV. DA	